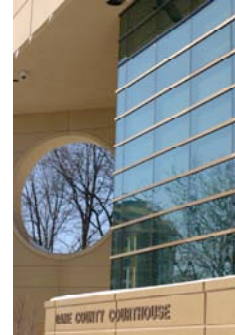




*MEDIA CONTACT:* Heather West, 612-724-8760, [heatherwest@earthlink.net](mailto:heatherwest@earthlink.net)  
*Photos by:* Sarah Owens Photography, [admin@sarahowensphotography.com](mailto:admin@sarahowensphotography.com)

## Wisconsin's Dane County Justice Center Achieves Green Design Goals with Wausau Window Systems

Wausau, Wis. – Hailed for its innovative, sustainable building design, Wisconsin's Dane County Justice Center in Madison is the County's first facility to meet prescribed green building goals. Contributing to this distinction, the building features a high-performance window system by Wausau Window and Wall Systems, which invites occupants and visitors to enjoy generous window views while benefiting from natural light and ventilation.



Construction on the \$30 million, 256,000-square-foot facility began in April 2003 and was opened in January 2006. Architects from Leonard Parker in Minneapolis and The Durrant Group Inc. in Hartland, Wis., collaborated with energy-consulting firm The Weidt Group in Minnetonka, Minn., and Miron Construction Company, Inc. in Madison, Wis., to design an eight-story Justice Center within the constraints of the County's environmental, financial and physical parameters.

"We made sure, every step of the way, to set a good example," said Dane County Executive Kathleen Falk. "This building is both cost-efficient and on budget. And this is the county's very first 'green building,' including many environmentally important features and we are very proud of this."



Situated on a small, triangular site within several hundred yards of the State Capitol, the site needed to be cleared of two existing office buildings prior to construction of a new, three-sided structure befitting its landscape. One of these office buildings was deconstructed and its salvageable building materials recycled and reused; the other was moved to a new location.

Connected by tunnel to the adjacent Public Safety Building, the new structure will house courtrooms, judges' chambers, jury assembly rooms, pressroom, cafeteria and offices for city and county commissioners, the bailiffs, the district attorney and his staff. According to Circuit Judge Sarah O'Brien, nearly every office will enjoy a window.

With respect to its neighborhoods and in accordance with local building codes, the new Justice Center also had to comply with height limitations and space restrictions. The City of Madison does not allow any structure to exceed the 285-foot height of the State Capitol Dome. Additionally, the Center needed to maintain minimum requirements for space between the buildings to gain the desired, expansive window system.

*(more)*

*(page 2/Wausau Helps Dane County Justice Center Achieve Green Design Goals)*

Incorporating Wausau's window system was a key consideration in helping the building meet the County's green building guidelines, equivalent to that of a LEED Silver rating under the Green Building Rating System®. As part of a "whole building" design approach, careful consideration was given to save energy and create a healthy work environment. Toward this goal, Wausau's window system maximized daylighting design objectives to help increase worker productivity and reduce electric lighting costs.



General contractor Simmons Building Products Inc. of Milwaukee called upon Wausau to engineer an energy-efficient curtainwall system designed with both convex and concave wall forms to fit the Justice Center's constrained contours.

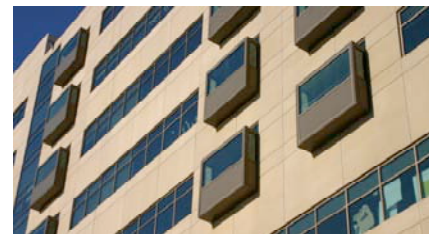


Wausau relied on low-E glass to minimize unwanted heat gain and glare. Accommodating natural ventilation, Wausau's zero sightline, operable windows also were manufactured and pre-glazed as integral element of the unitized system.

"Both the concave and the convex areas are four-sided curtainwall that was pre-assembled and pre-glazed into carrier frames for fast installation. Because the system is factory-fabricated in a quality-controlled environment, we can ensure the design and performance criteria are achieved," explains Wausau's regional sales manager Les Raboin.

The Weidt Group estimates Dane County Justice Center will be capable of saving up to 50% in electric consumption and 37% in overall annual operating energy for an estimated savings of \$96,500 in annual costs and a simple payback of 4.8 years.

"All of these goals and tasks would not have been possible without the extremely hard work of so many people," said County executive Falk at the building's dedication. "Whatever brings you here, it is of utmost importance that justice is served and it is our job as a government to do our best to make a citizen's visit as efficient and as convenient as possible. We have worked very hard to do that in this building."



*Nationally recognized for its innovative expertise, Wausau Window and Wall Systems is an industry leader in engineering window and curtainwall systems for commercial and institutional construction applications. For 50 years, Wausau has worked closely with architects, building owners and contractors to realize their vision for aesthetic beauty and lasting value, while striving to maintain the highest level of customer service, communication and overall satisfaction.*

*Wausau is a part of Apogee Enterprises, Inc., a publicly held, U.S. corporation. For more information on Wausau Window and Wall Systems, please call 877-678-2983, or visit [www.WausauWindow.com](http://www.WausauWindow.com).*

###