



WAUSAU

WINDOW AND WALL
SYSTEMS

FOR MORE THAN 30 YEARS, CONTRACTORS AND DESIGNERS HAVE TRUSTED SUPERWALL™ SYSTEMS FOR SMOOTH, QUICK INSTALLATION, AND WORRY-FREE, TEST-VERIFIED PERFORMANCE. STANDARD, EASY-TO-FABRICATE SUPERWALL - IN ANY COLOR FINISH - CAN SHIP AS FAST AS STOCK LENGTHS IN STANDARD ANODIZED FINISHES.

WHEN YOU NEED IT FAST AND YOU NEED IT RIGHT, WAUSAU'S SUPERWALL SYSTEMS ARE IDEALLY SUITED TO MEET THE ACCELERATED PACE OF CONSTRUCTION TIMELINES FOR LOW- AND MID-RISE BUILDINGS SUCH AS SCHOOLS, HOSPITALS, AND OFFICES.



SUPERWALL™

CURTAINWALL - WINDOW WALL

WWW.WAUSAUWINDOW.COM
1.877.678.2983

Augsburg College Library and IT Center
Minneapolis, Minnesota • bwwr Architects

CHOOSE FROM EIGHT STANDARD VOC-FREE ANODIZE FINISHES INCLUDING LINETEC'S UNIQUE COPPER ANODIZE.

SUPERWALL™ IS AVAILABLE IN AN UNLIMITED CHOICE OF COLORS IN 50% OR 70% FLUOROPOLYMER OR BAKED ENAMEL PAINTS. WITH 30,000 UNIQUE COLORS IN OUR PALETTE AND THE ABILITY TO MATCH ALMOST ANY OTHER COLOR, YOU CAN SELECT THE PERFECT FINISH FOR YOUR PROJECT.

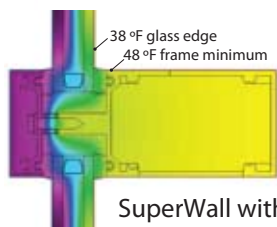
ALL ORGANIC PAINT FINISHES ARE APPLIED UTILIZING A NEAR-100% VOC CAPTURE PROCESS, FROM WAUSAU'S FINISHER OF CHOICE, LINETEC.



Need matching architectural aluminum accessories? Linetec, the nation's leading finisher, can make sure wall panels, louvers, sun shades, coping, and other trim blend seamlessly with SuperWall



THERM 5.2 Model



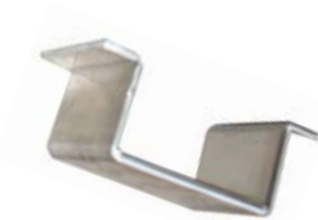
SuperWall with aluminum pressure plate

ADVANTAGE BY WAUSAU OFFERS PRE-ENGINEERED STANDARD PRODUCTS FOR COMPETITIVE PRICING AND QUICK DELIVERY.



DESIGN AND SUBMISSION ENGINEERING SUPPORT TOOLS HELP ENSURE PROMPT APPROVAL OF YOUR SHOP DRAWINGS AND CALCULATIONS - AVAILABLE ONLINE 24/7.

- AutoCAD® .DWG details
- Up-to-date test reports
- Wind load charts
- Guide specifications
- Standard NFRC thermal models
- Samples
- Anchorage recommendations
- Installation instructions
- LEED® submission templates

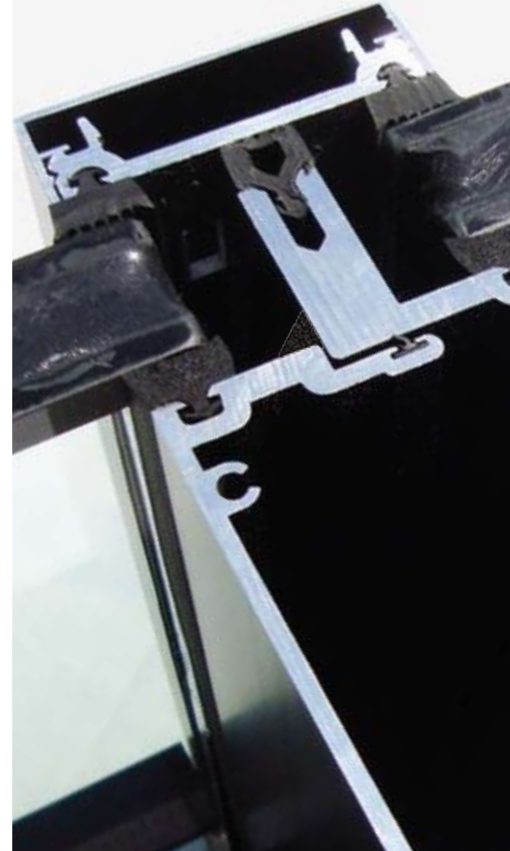
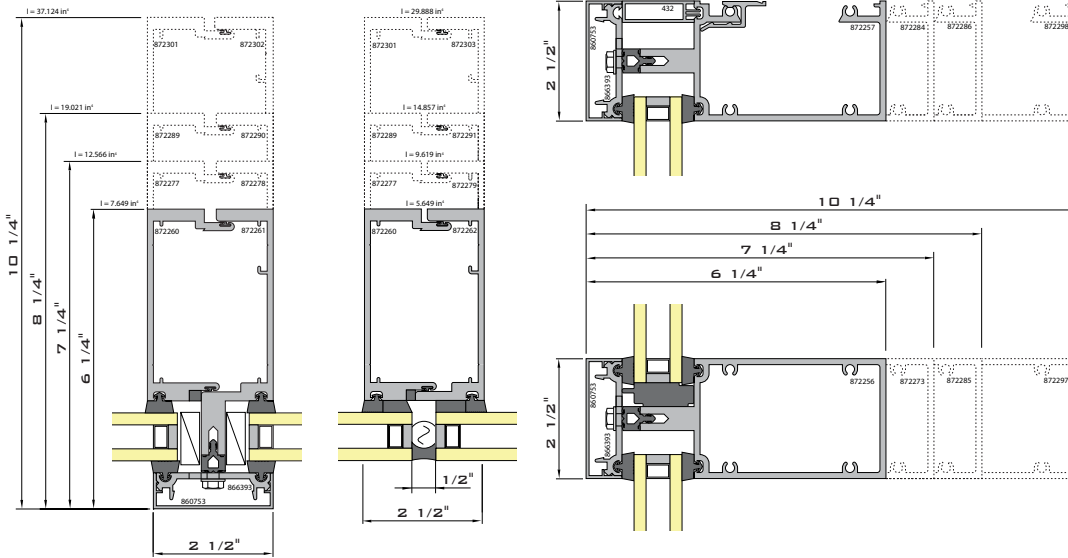


Advantage Wall Products makes it easy to provide a complete, coordinated wall system, offering aluminum brake metal and panels formed to your specifications - Finished to match.



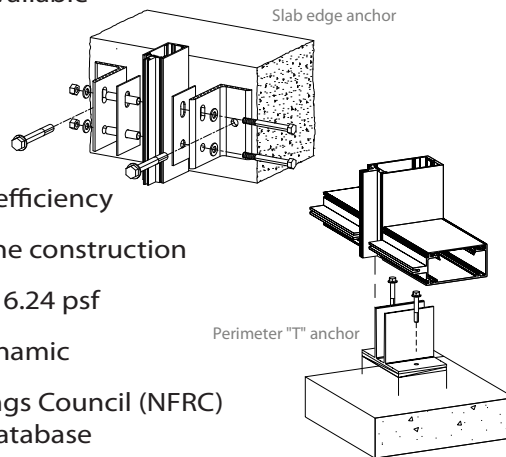
6250 7250 8250 10250

FOUR COMPLETE SYSTEMS IN 6-1/4", 7-1/4", 8-1/4" AND 10-1/4" FRAME DEPTHS TO EFFICIENTLY ADDRESS ALMOST ANY SPAN/LOAD REQUIREMENT - ALL SYSTEMS' COMPONENTS ARE INTERNALLY CONSISTENT AND INTERCHANGEABLE.



SUPERWALL™

- 2 1/2" exterior sightline - Accent covers available
- Captured or vertical structural glazed
- Full 1/8" extrusion wall thickness
- EPDM gaskets; silicone setting blocks
- 3/8" wide thermal separator for energy efficiency
- Easy-to-install "ladder frame" screw-spline construction
- Less than 0.06 cfm/sqft air infiltration at 6.24 psf
- 15 psf water test pressure; static and dynamic
- Listed in the National Fenestration Ratings Council (NFRC) Certified Products Directory and CMA database



Thermal Performance Summary	NFRC U-Factor BTU/hr-ft ² -°F		SHGC Range	AAMA U-Factor BTU/hr-ft ² -°F		CRF
	Tested	Modeled Range		Tested		
6250 SuperWall Aluminum PP (Captured Glazing)	0.38	0.35 to 0.57	0.34 to 0.65	0.40		68 Frame 67 Glass
6250 SuperWall Composite PP (Captured Glazing)	0.34	0.34 to 0.54	0.34 to 0.65	0.35		73 Frame 69 Glass

Unless noted, tested performance data listed is based on Viracon 1" overall VE1 -2M insulating glass (Low-E on surface #2), 1/2" argon with stainless steel spacer. Modeled NFRC performance data range listed is based on various clear substrate glass configurations, with validation test per NFRC requirements. Contact Wausau for project-specific thermal performance modeling.

Test results can vary



ADVANTAGE WALL PRODUCTS

...BEYOND STANDARD SUPERWALL

ENTRANCES AND STOREFRONT

ENSURE SINGLE SOURCE RESPONSIBILITY -
CONSISTENT COLOR, COORDINATION OF DELIVERIES,
AND STRENGTH OF MANUFACTURER'S WARRANTY

2" AND 3" FACE SUPERWALL™

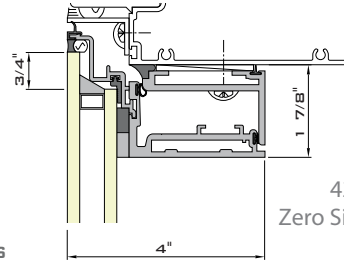
ACCOMMODATE SEISMIC MOVEMENTS, MATCH
SIGHTLINES OF UNITIZED CURTAINWALL,
PROVIDE NARROWER OR WIDER ACCENT MULLIONS

3250-Z, 4250-Z ZERO SIGHTLINE

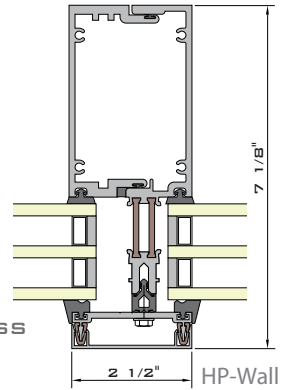
PROJECT-OUT AW CLASS CURTAINWALL INSERT VENTS
FOR UNOBTRUSIVE NATURAL VENTILATION -
STRUCTURAL GLAZED FOR LARGE SIZES -
STANDARD 2250 SERIES INSERT VENTS ALSO AVAILABLE



Standard Narrow
Stile Entrance -
4" Bottom Rail



4250-Z
Zero Sightline



HP-WALL

MULTI-LEVEL THERMAL
BARRIER FOR
R5 PERFORMANCE -
ACCEPTS DOUBLE OR
TRIPLE INSULATING GLASS

HP-Wall



Lakeview Medical Center
Rice Lake, Wisconsin Erdman - HP-Wall

HIGH RECYCLED CONTENT
ALUMINUM FRAMING AVAILABLE



SUPERWALL-XLT

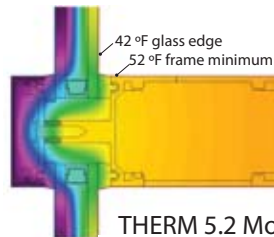
WITH COMPOSITE FIBERGLASS PRESSURE PLATES -
LOWER U-FACTORS AND IMPROVED CONDENSATION
RESISTANCE FOR HIGH-HUMIDITY APPLICATIONS

CLEAR STORY™

SUN SHADES AND LIGHT SHELVES FOR CONTROL
OF SOLAR HEAT GAIN AND GLARE - A WIDE VARIETY
OF PRE-ENGINEERED CONFIGURATIONS AVAILABLE

BLAST HAZARD MITIGATION AND HURRICANE IMPACT

TESTED SYSTEMS TO MEET YOUR PROJECTS'
PROTECTIVE GLAZING REQUIREMENTS



THERM 5.2 Model

SuperWall with
composite
pressure plates



WAUSAU
WINDOW AND WALL
SYSTEMS



efpa
Promoting environmentally
friendly building products.
Cert. No. 000062309
www.efpa.com

"SuperWall" and "ClearStory" are trademarks of
Apogee Wausau Group, Inc. All rights reserved.
© 2017 Apogee Wausau Group, Inc.

7800 International Drive Wausau, WI 54401
Toll Free 1 877 678 2983 Fax 1 715 843 4350
E-Mail info@wausauwindow.com