



**WAUSAU**

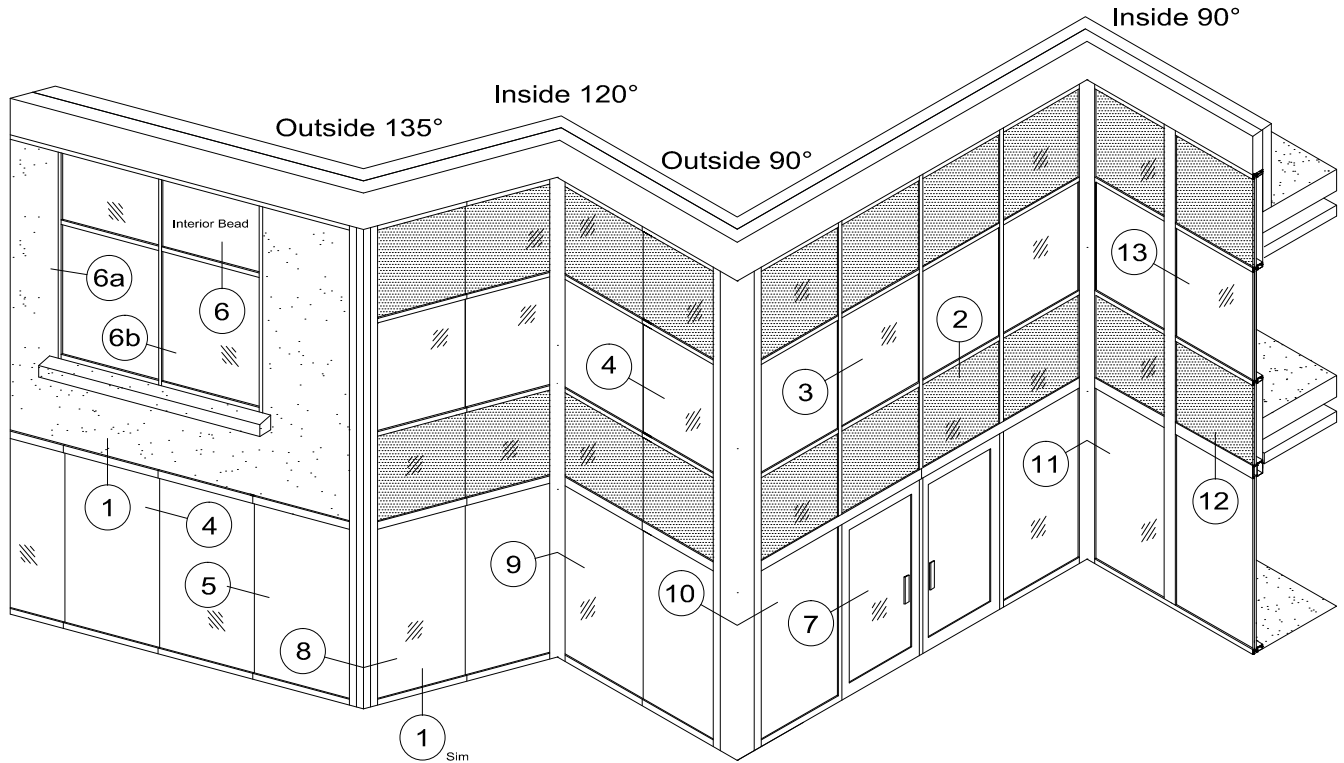
WINDOW AND WALL  
SYSTEMS

Elevation

## Curtainwall

2 1/2" SUPERWALL™ Series

Elevation Viewed From The Exterior



### Section Contents

### Page(s)

2 1/2" Face Details .....	C2-02 thru C2-05
SuperWall Corners .....	C2-06 thru C2-09
Trim Covers .....	C2-10 thru C2-13
Door Frame Inserts .....	C2-14
Glazing Options .....	C2-15
Mullion Splices .....	C2-16
Steel Cladding .....	C2-17 thru C2-18
Projected Vent Inserts .....	C2-19
Isometric Views .....	C2-20 thru C2-24

# SuperWall

Contact A Wausau Representative For Other Possible Configurations.



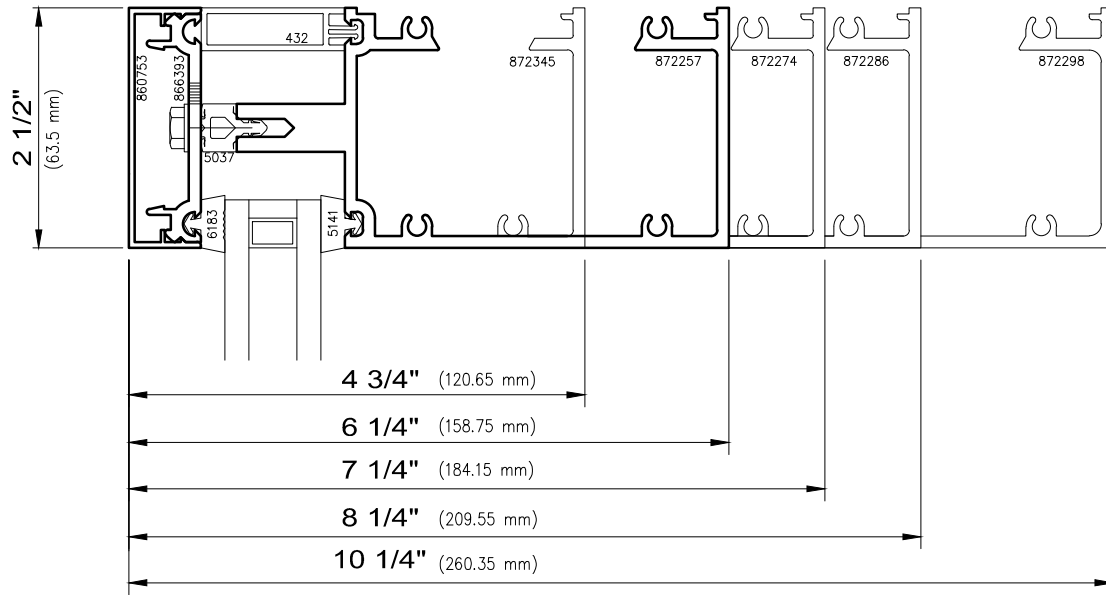
**WAUSAU**

WINDOW AND WALL  
SYSTEMS

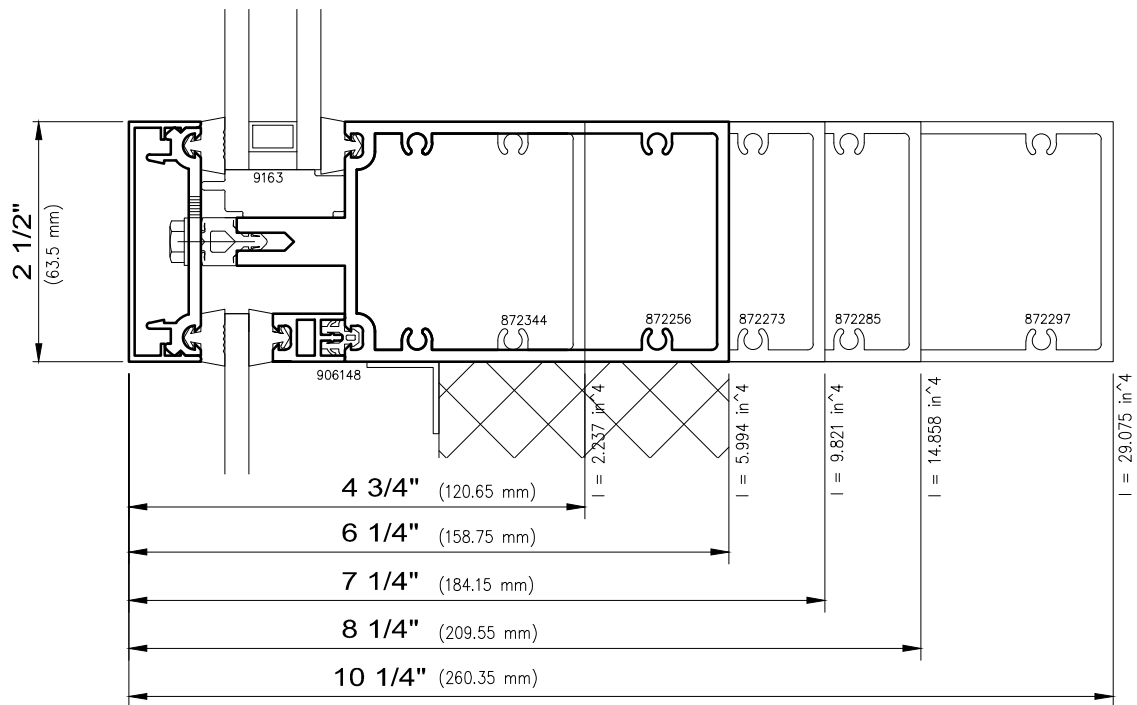
4750/ 6250/ 7250/ 8250/ 10250 SW

Curtainwall

2 1/2" SUPERWALL™ Series



1 Perimeter Frame



2 Vision/Spandrel Intermediate



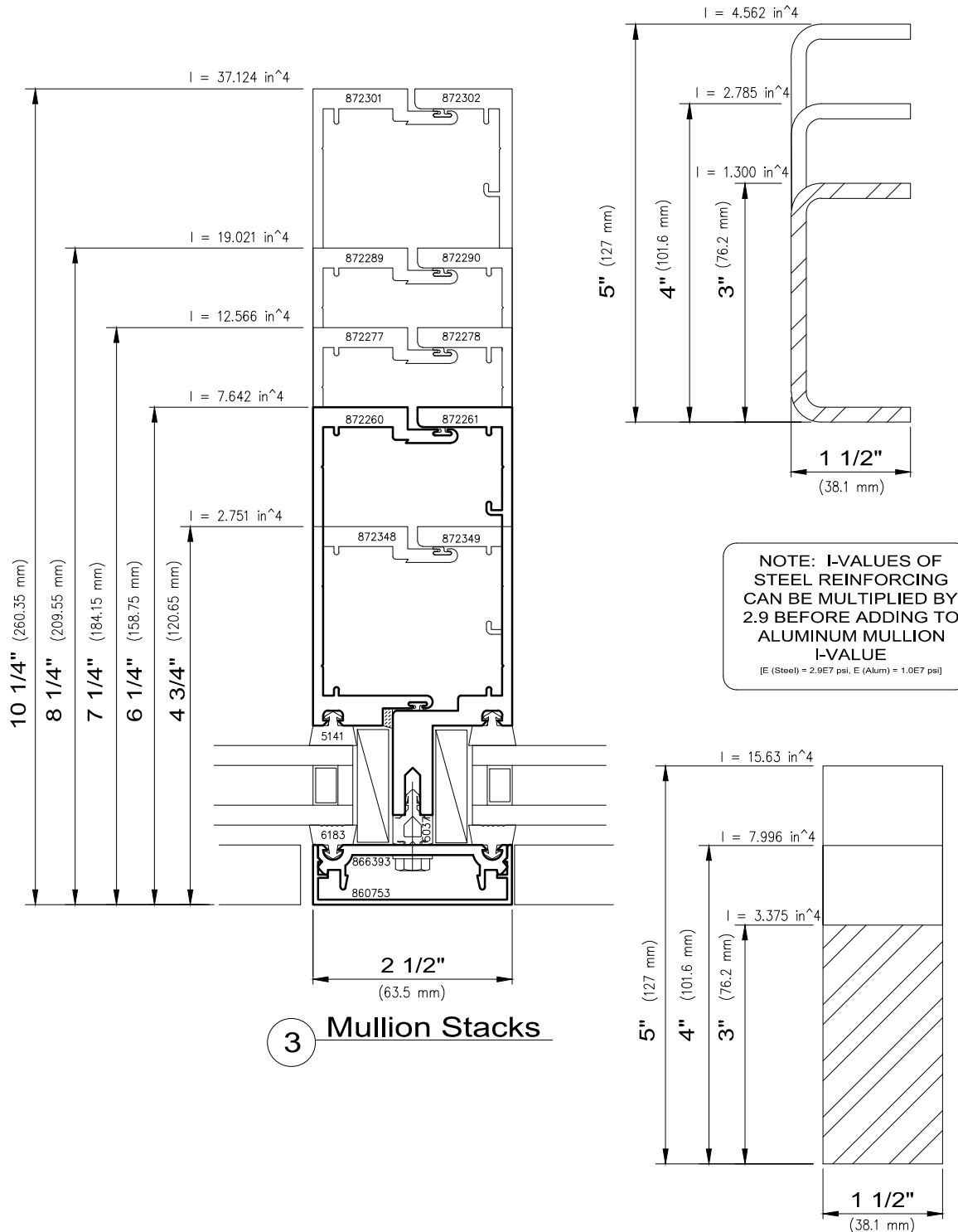
**WAUSAU**

WINDOW AND WALL  
SYSTEMS

4750/ 6250/ 7250/ 8250/ 10250 SW

Curtainwall

2 1/2" SUPERWALL™ Series





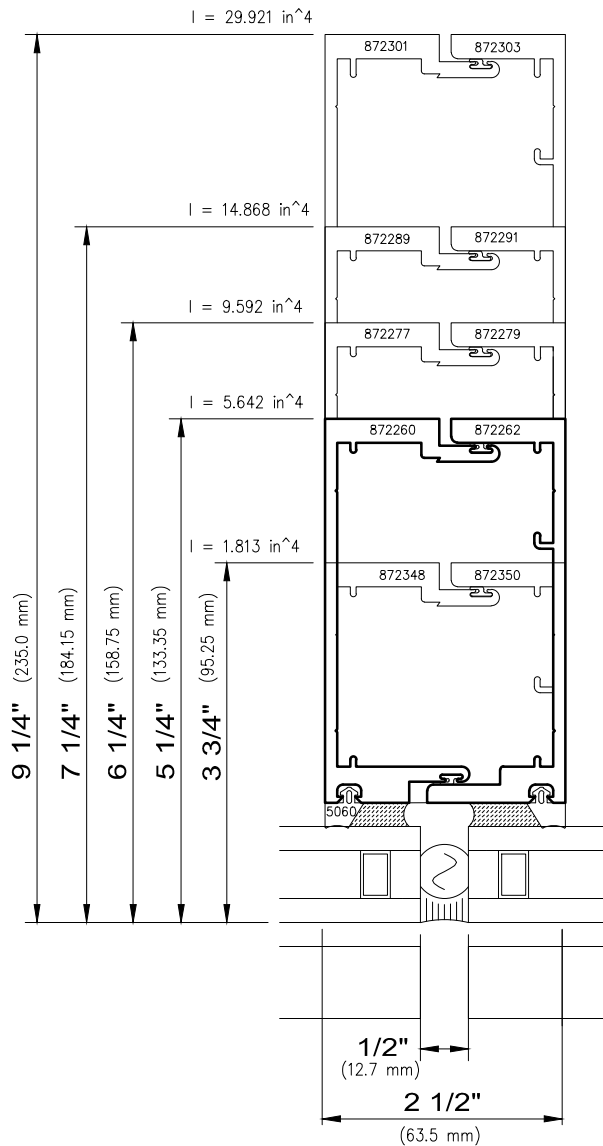
**WAUSAU**

WINDOW AND WALL  
SYSTEMS

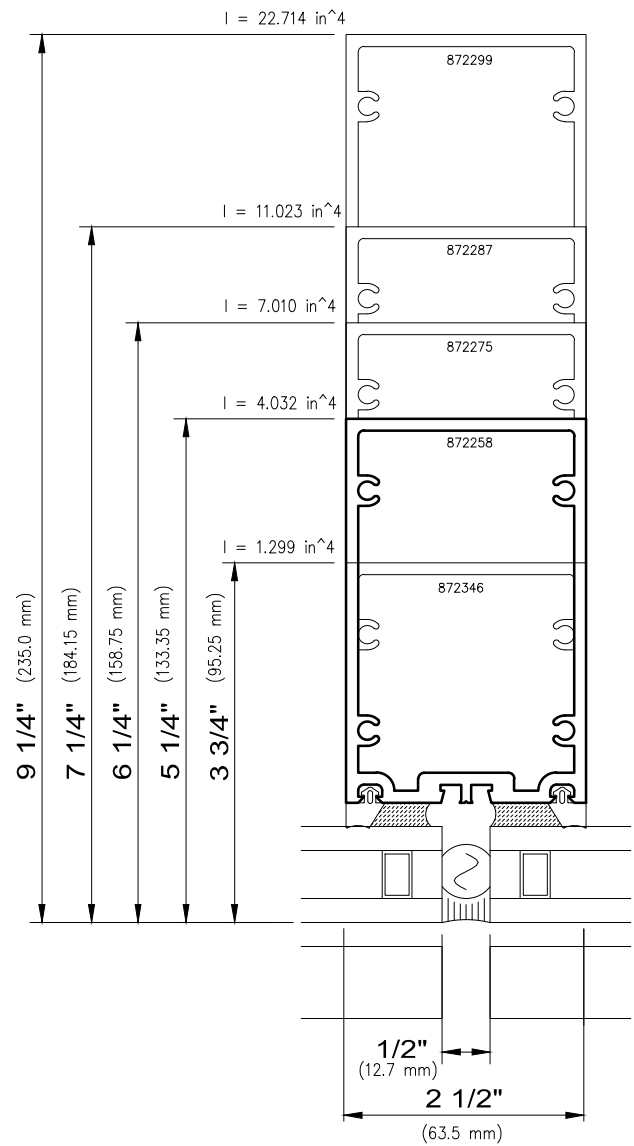
4750/ 6250/ 7250/ 8250/ 10250 SW

**Curtainwall**

**2 1/2" SUPERWALL™ Series**



**4** Structural Glazed Mullion Stacks



**5** Tube Mullions



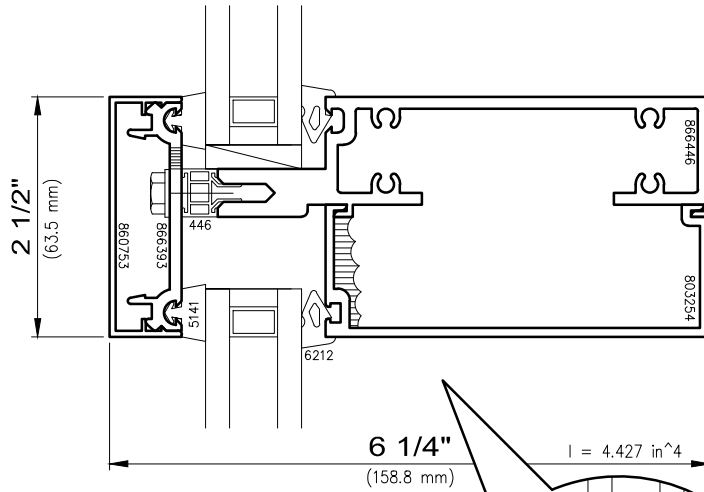
# WAUSAU

WINDOW AND WALL  
SYSTEMS

Posts and Stacks

## Curtainwall

2 1/2" SUPERWALL™ Series



### NOTE:

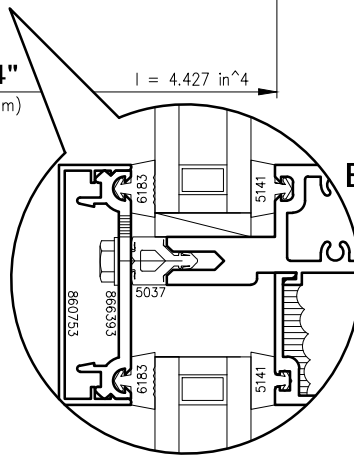
Superwall with removable interior beads can be initially glazed either entirely from the interior, or entirely from the exterior as shown, but a combination of both is not recommended, except as necessary for reglazing.

Special anchor details may be required for inside glazing of spandrels at anchorage conditions. Insulating spandrel glass is recommended.

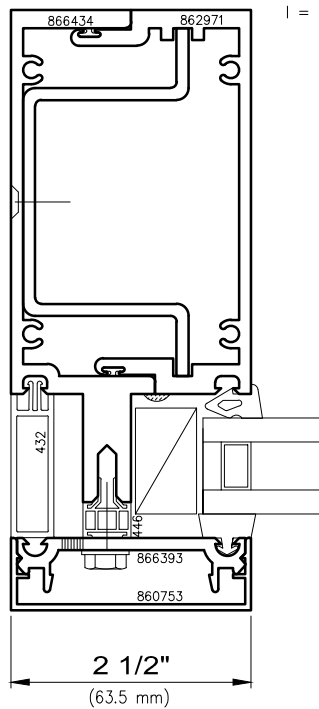
It is especially critical to ensure 100% tooled seals at interior glazing gasket races and zone dams above removable interior beads, as well as bead-to-frame joints. Refer to Wausau installation instructions for more information.

6

Intermediate  
Interior Glazed

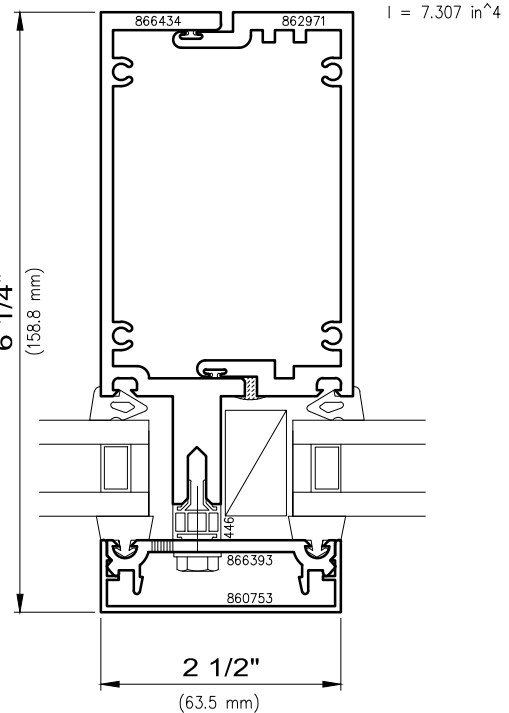


Exterior  
Glazed



6a

Perimeter Frame  
with Offset Stem



6b

Mullion Stacks  
with Offset Stem



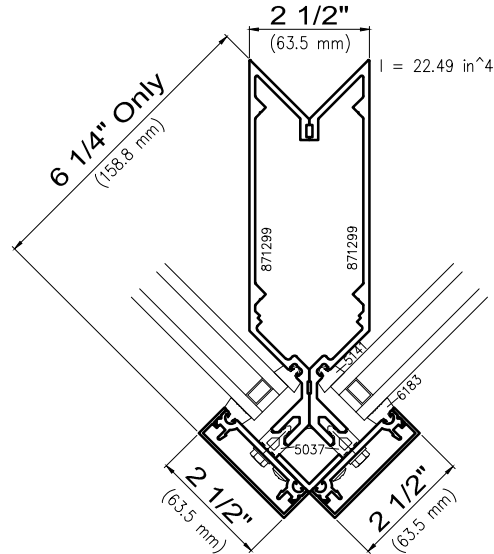
**WAUSAU**

WINDOW AND WALL  
SYSTEMS

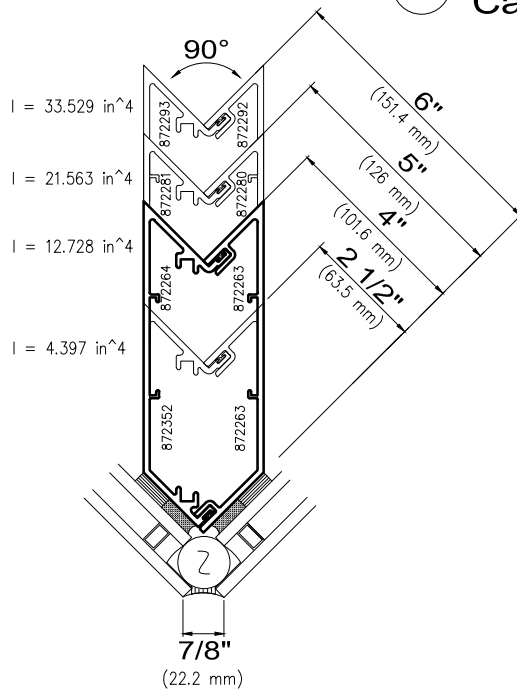
Corners

Curtainwall

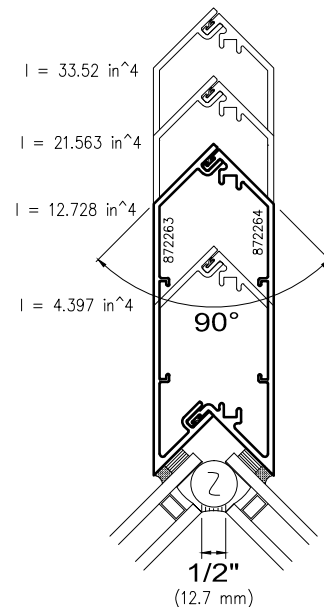
2 1/2" SUPERWALL™ Series



10 Outside 90° Corner  
Captured Glazing



10 Outside 90° Corner  
Structural Glazed



11 Inside 90° Corner  
Structural Glazed



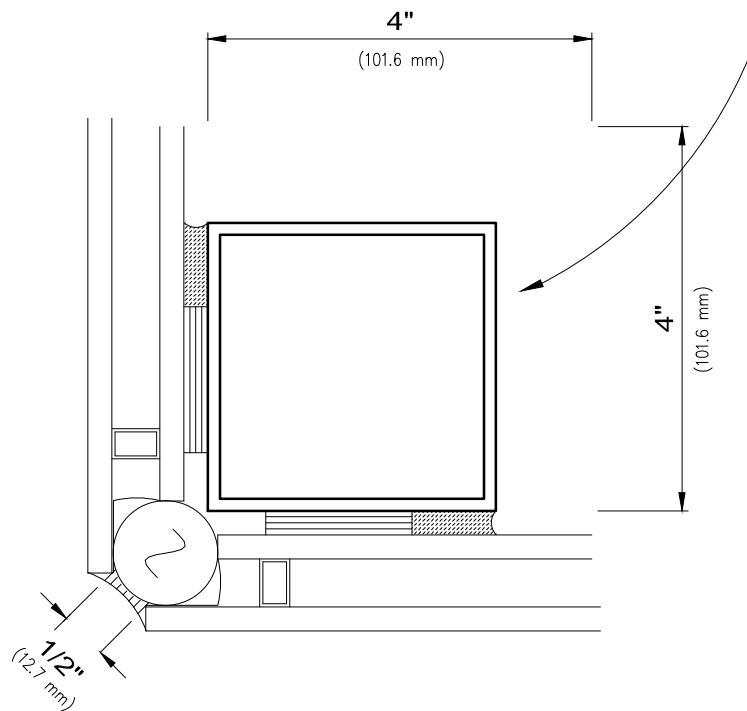
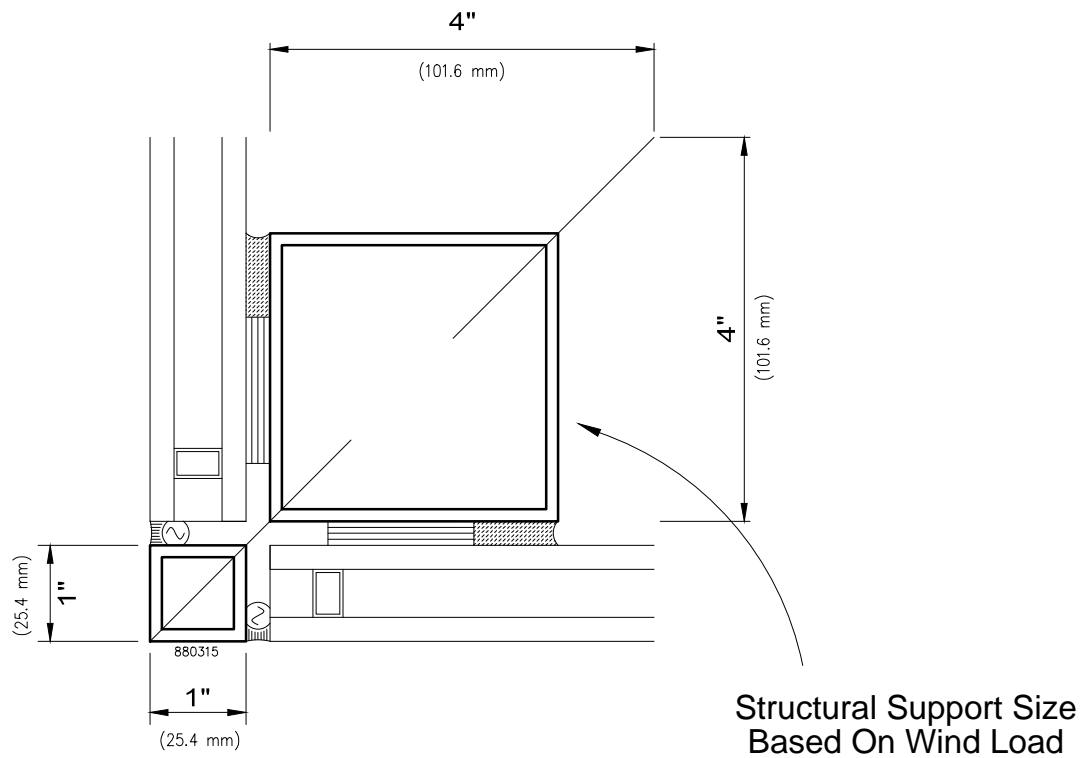
**WAUSAU**

WINDOW AND WALL  
SYSTEMS

Structural Glazed Corners

Curtainwall

2 1/2" SUPERWALL™ Series



Outside 90° Corner  
Structural Glazed



**WAUSAU**

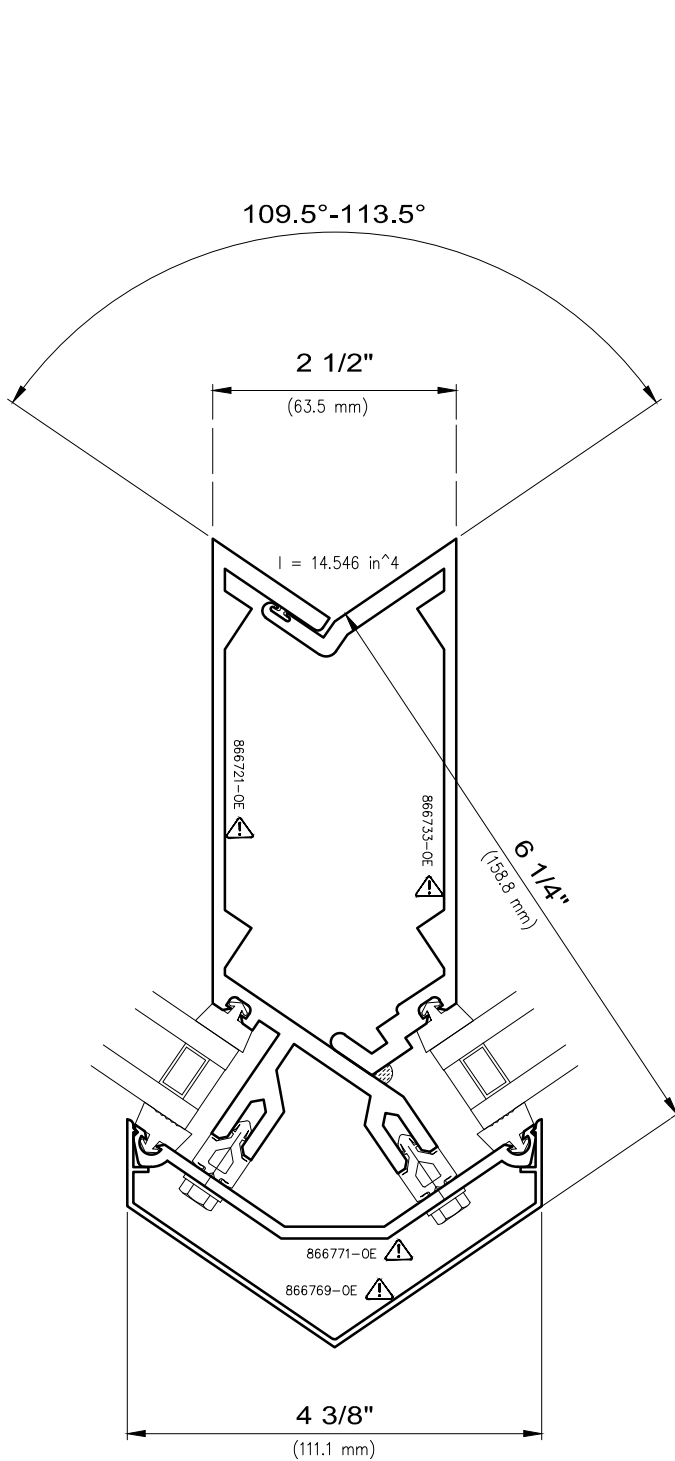
WINDOW AND WALL  
SYSTEMS

Splayed Mullions

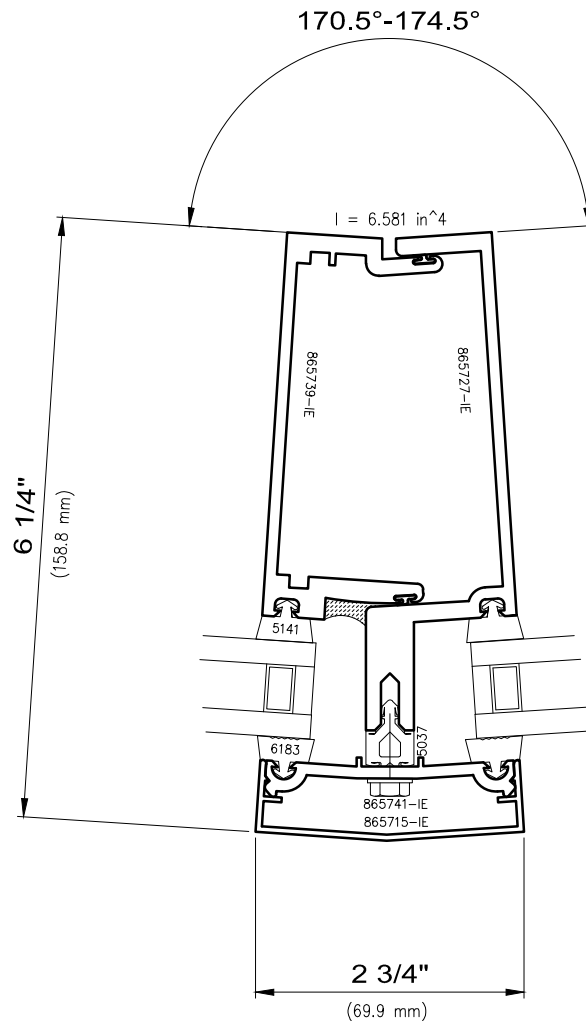
Curtainwall

**2 1/2" SUPERWALL™ Series**

Non-stocked items shown – Minimum order quantity may apply



111.5° Splayed Mullion



172.5° Splayed Mullion

⚠ - OBSOLETE TOOLING STATUS

SCALE: 6" = 1'-0"

C2-8

© 2015 Apogee Wausau Group, Inc.





**WAUSAU**

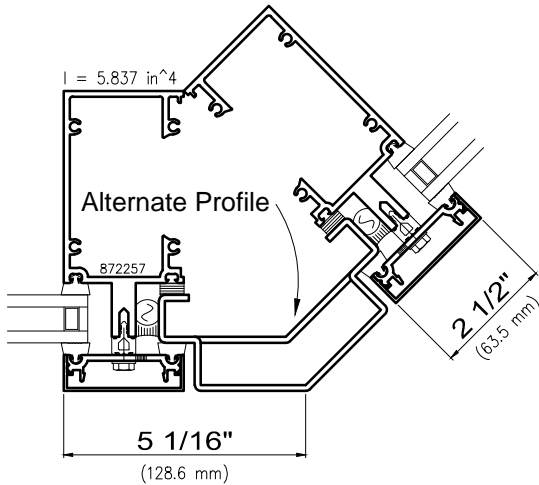
WINDOW AND WALL  
SYSTEMS

Corners

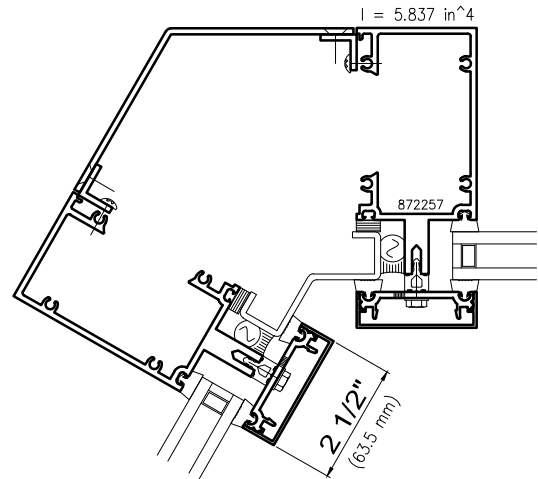
Curtainwall

2 1/2" SUPERWALL™ Series

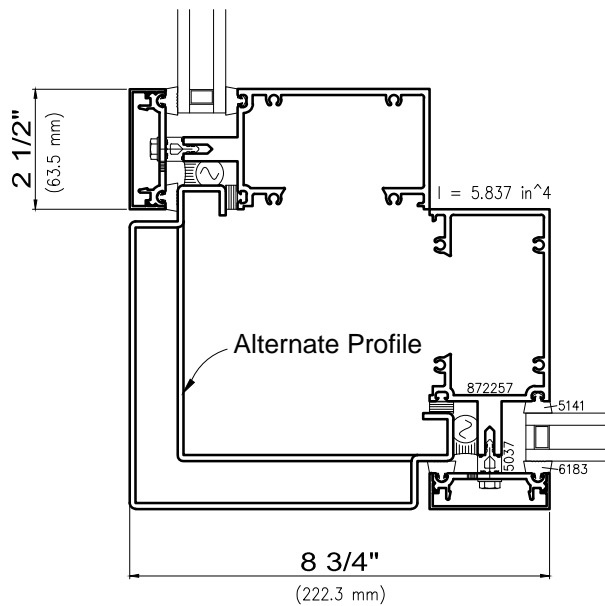
(6250SW Series Illustrated)



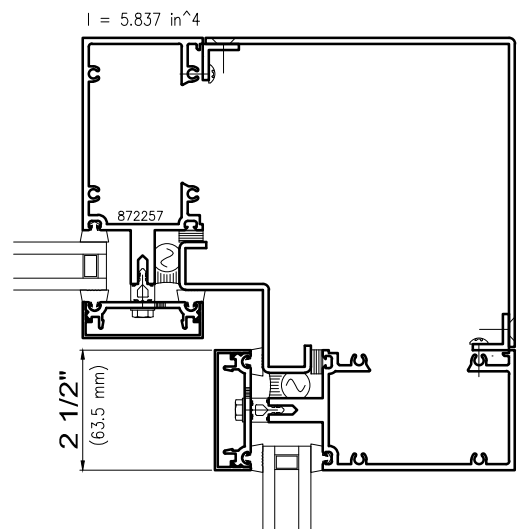
8 Outside 135° Corner Mullion  
0.125" Formed Aluminum



9 Inside 120° Corner Mullion  
0.125" Formed Aluminum



Outside 90° Corner Mullion  
0.125" Formed Aluminum



Inside 90° Corner Mullion  
0.125" Formed Aluminum



**WAUSAU**

WINDOW AND WALL  
SYSTEMS

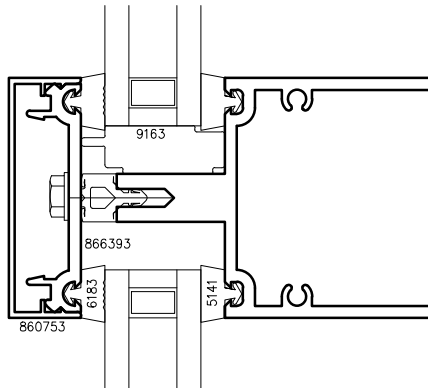
Trim Covers

Curtainwall

**2 1/2" SUPERWALL™ Series**

Non-stocked items shown – Minimum order quantity may apply

**2 1/2" Exterior  
Trim Covers**



3/4"



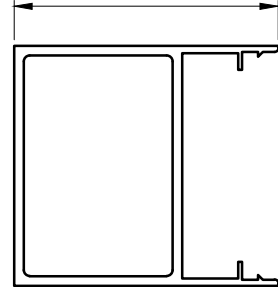
(19.1 mm)  
860753

1"



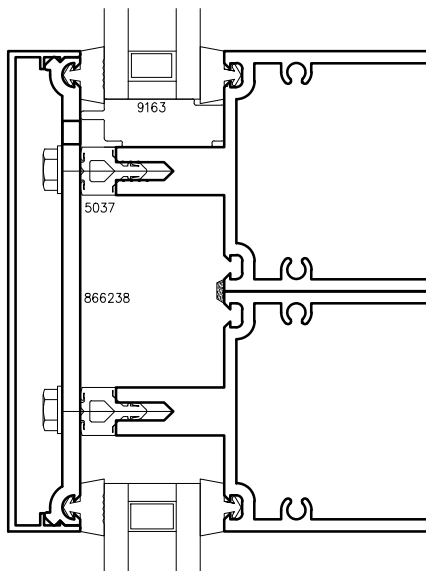
(25.4 mm)  
862555-IE

2 3/4"



(69.9 mm)  
872416-IE

**5" Exterior  
Trim Covers**



(19.1 mm)  
3/4"



5"

(127.0 mm)

866226-IE



**WAUSAU**

WINDOW AND WALL  
SYSTEMS

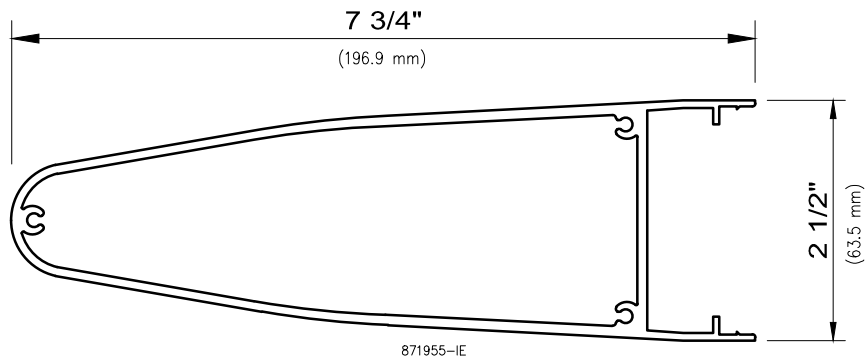
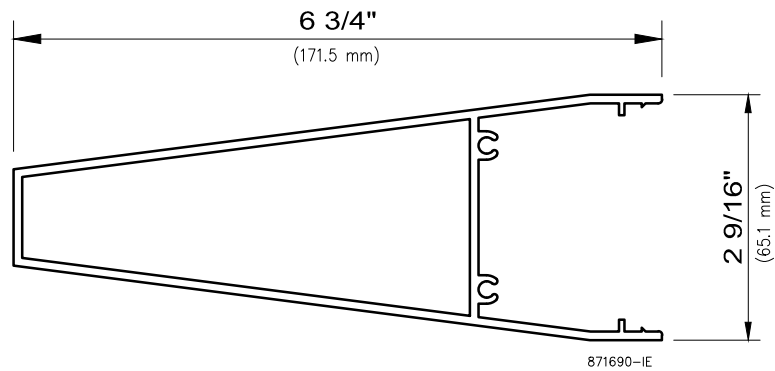
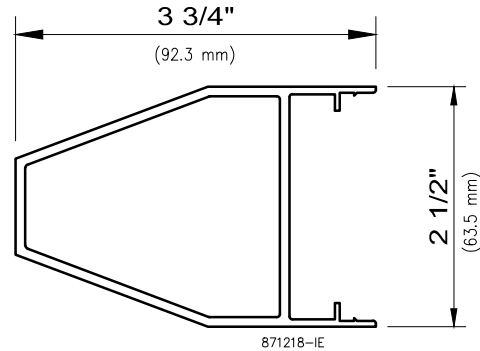
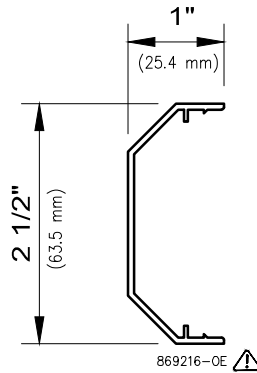
Trim Covers

Curtainwall

**2 1/2" SUPERWALL™ Series**

Non-stocked items shown – Minimum order quantity may apply

### 2 1/2" Accent Trim Covers



⚠ – OBSOLETE TOOLING STATUS

Non-standard deep exterior snap-on covers (those extending more than 2" from the face of glass) may need to be secured by methods other than snap fits. It is the responsibility of the installer to verify applied loads from maintenance equipment, staging, scaffolding or other exterior access devices, regardless of whether such requirements are included in contract documents, and add mechanical attachment provisions as necessary. Wausau's structural engineering department is available to assist in analysis of loading. Dynamic wind loads, as well as the potential for build-up of ice or snow, should also be considered.



# WAUSAU

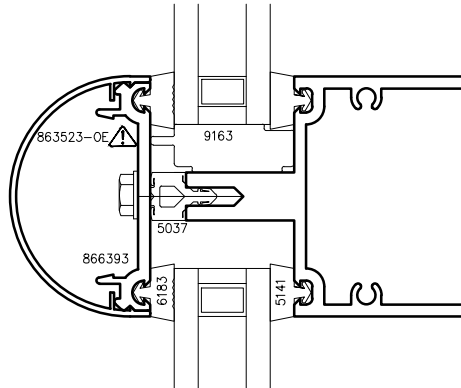
WINDOW AND WALL  
SYSTEMS

Trim Covers

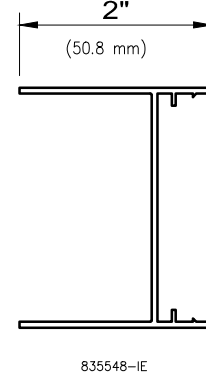
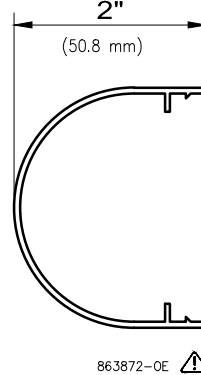
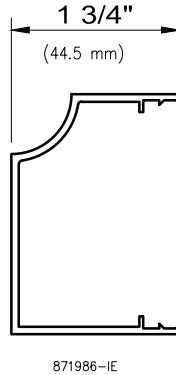
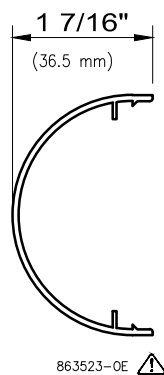
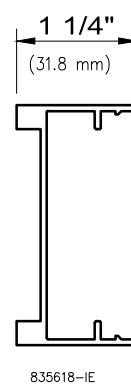
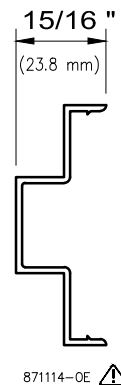
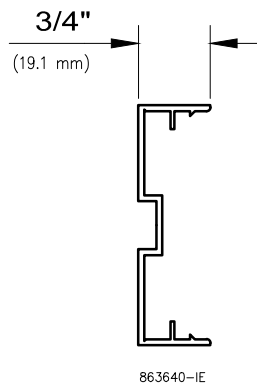
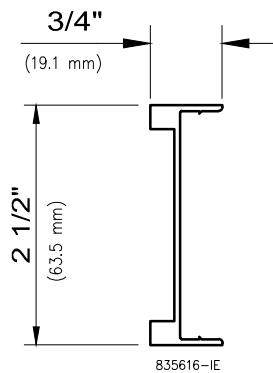
## Curtainwall

## 2 1/2" SUPERWALL™ Series

Non-stocked items shown – Minimum order quantity may apply



## 2 1/2" Accent Trim Covers



⚠ – OBSOLETE TOOLING STATUS

Non-standard deep exterior snap-on covers (those extending more than 2" from the face of glass) may need to be secured by methods other than snap fits. It is the responsibility of the installer to verify applied loads from maintenance equipment, staging, scaffolding or other exterior access devices, regardless of whether such requirements are included in contract documents, and add mechanical attachment provisions as necessary. Wausau's structural engineering department is available to assist in analysis of loading. Dynamic wind loads, as well as the potential for build-up of ice or snow, should also be considered.

**WAUSAU**WINDOW AND WALL  
SYSTEMS

Accessories

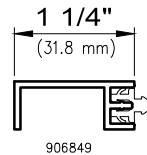
Curtainwall

**2 1/2" SUPERWALL™ Series**

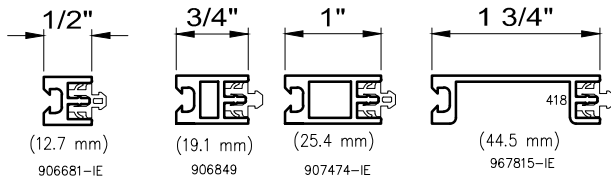
Non-stocked items shown – Minimum order quantity may apply

## Miscellaneous Accessories

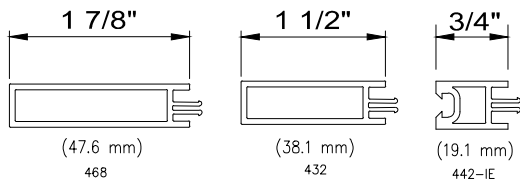
### Aluminum Pocket Filler



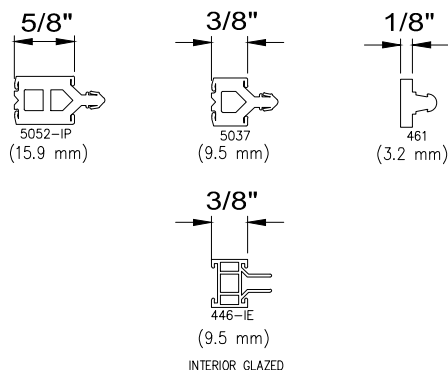
### Aluminum Glazing Inserts



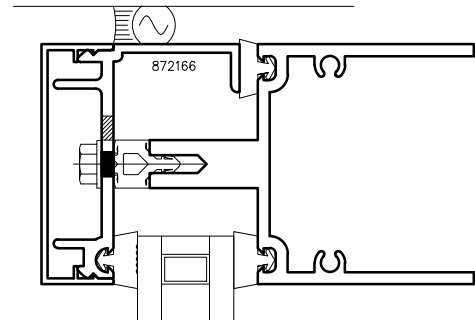
### PVC Pocket Filler



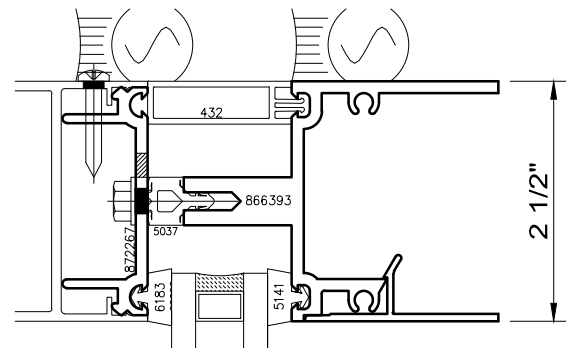
### Thermal Separator



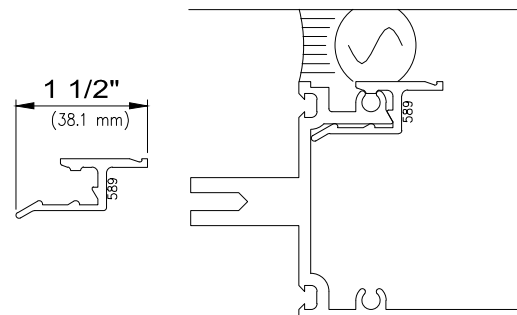
### Angled Pressure Plate



### Pressure Plate with Fastener Legs



### PVC Caulk Backer





**WAUSAU**

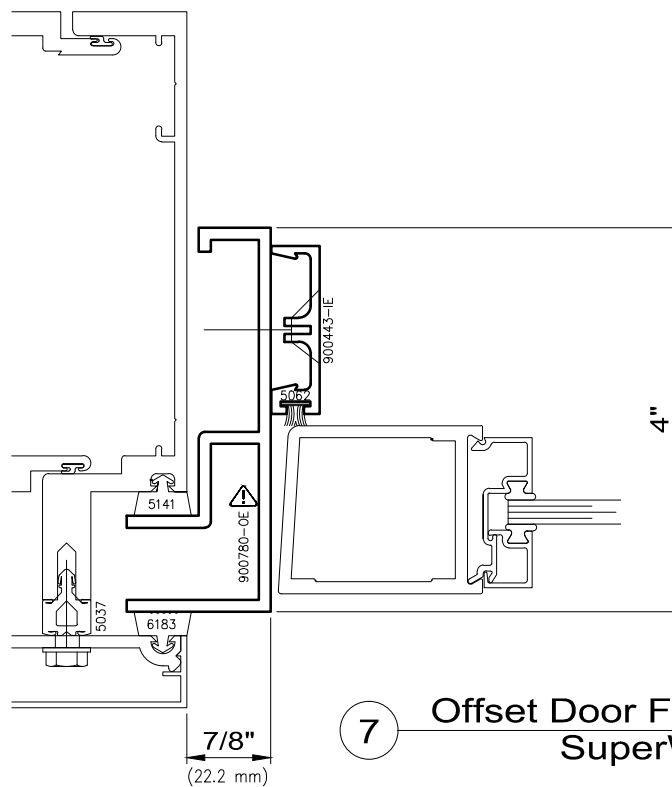
WINDOW AND WALL  
SYSTEMS

Door Frame Inserts

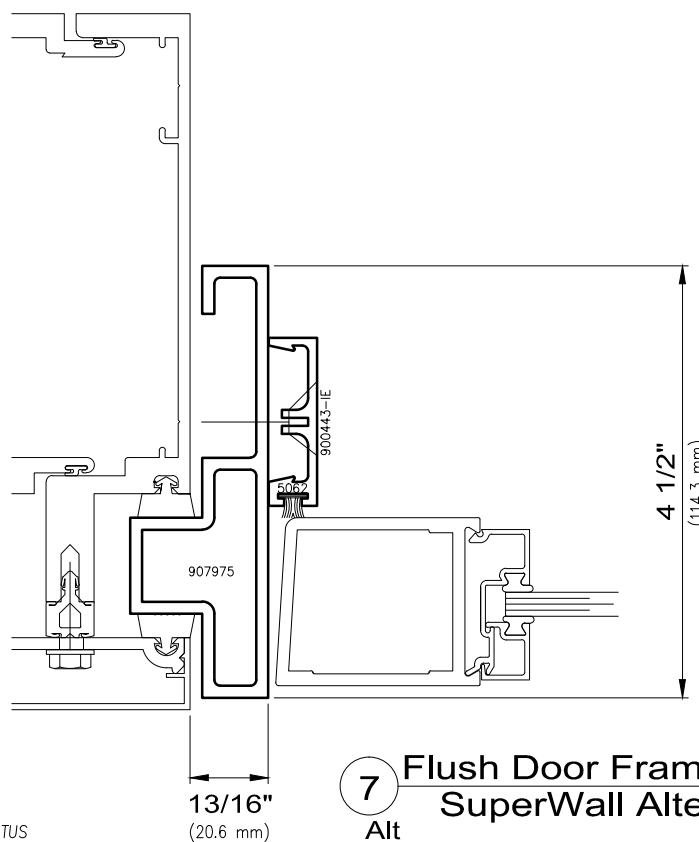
Curtainwall

**SUPERWALL™** Series

Non-stocked items shown – Minimum order quantity may apply



**7** Offset Door Frame Insert  
SuperWall



**7** Alt Flush Door Frame Insert  
SuperWall Alternate

- OBSOLETE TOOLING STATUS



**WAUSAU**

WINDOW AND WALL  
SYSTEMS

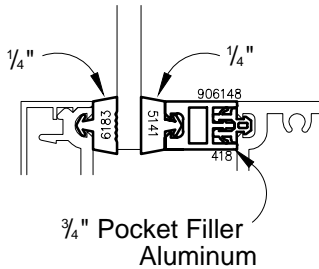
Glazing Options

**Curtainwall**

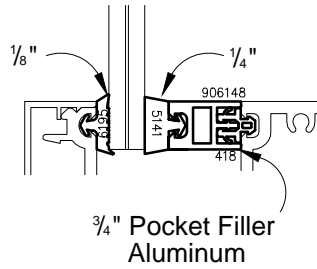
**2 1/2" SUPERWALL™ Series**

Non-stocked items shown – Minimum order quantity may apply

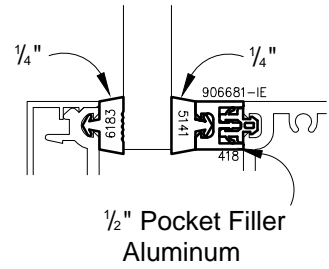
1/4" Glass



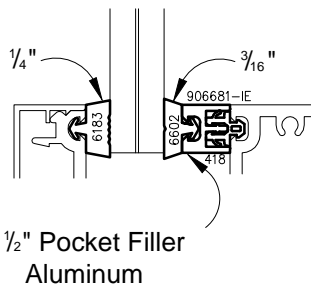
3/8" Glass



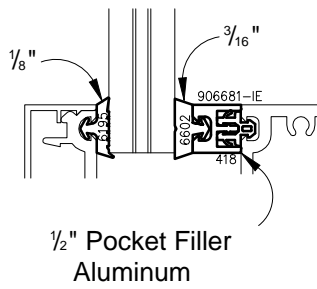
1/2" Glass



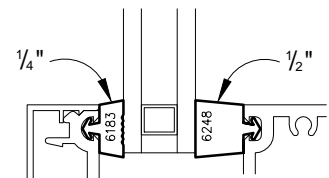
9/16" Glass



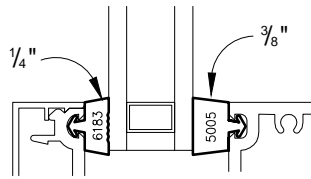
1 1/16" Glass



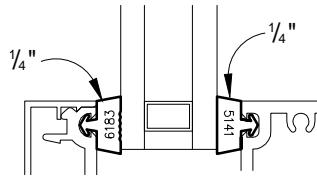
3/4" Glass



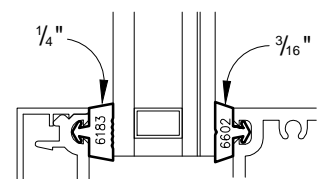
7/8" Glass



1" Glass

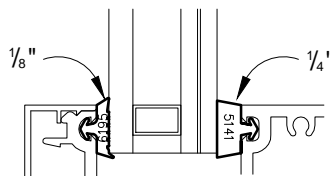


1 1/16" Glass



Glass Size Limitations Apply

1 1/8" Glass



Contact A Wausau Representative For Other Possible Glazing Options.



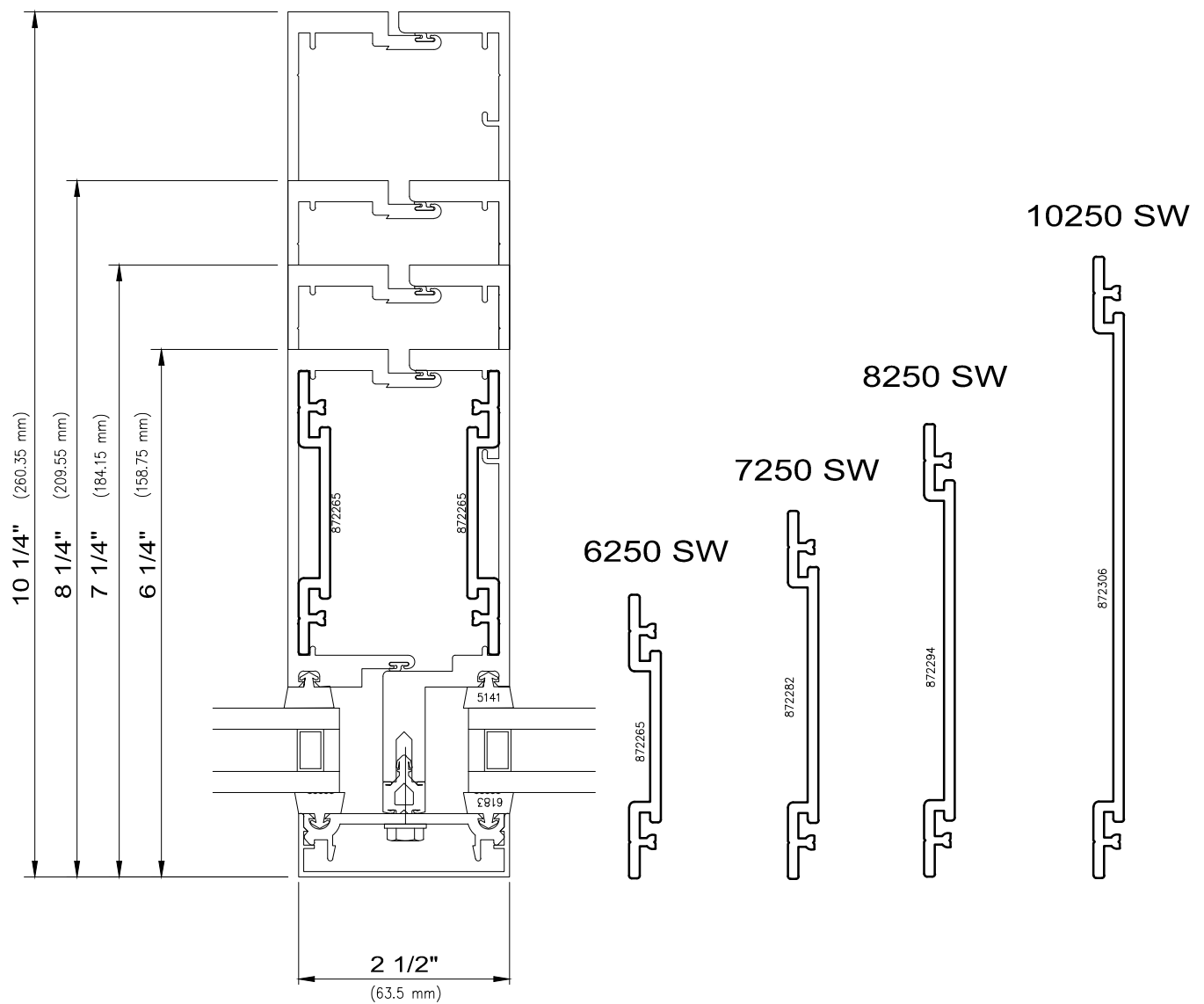
**WAUSAU**

WINDOW AND WALL  
SYSTEMS

6250/ 7250/ 8250/ 10250 Mullion Splices

Curtainwall

2 1/2" SUPERWALL™ Series



SuperWall Mullion Splice





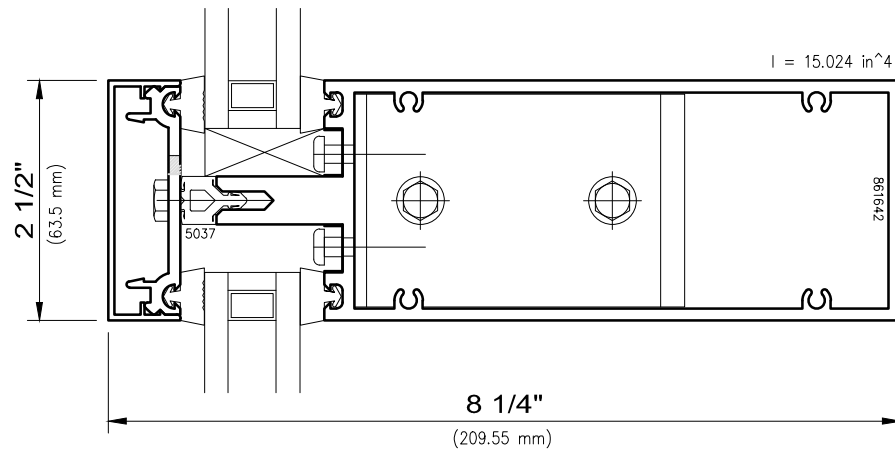
**WAUSAU**

WINDOW AND WALL  
SYSTEMS

Horizontal

Curtainwall

STEEL CLADDING Series



I<sub>yy</sub>—Values are for Glass Load

SCALE: 6" = 1'-0"

C2-17

© 2015 Apogee Wausau Group, Inc.



**WAUSAU**

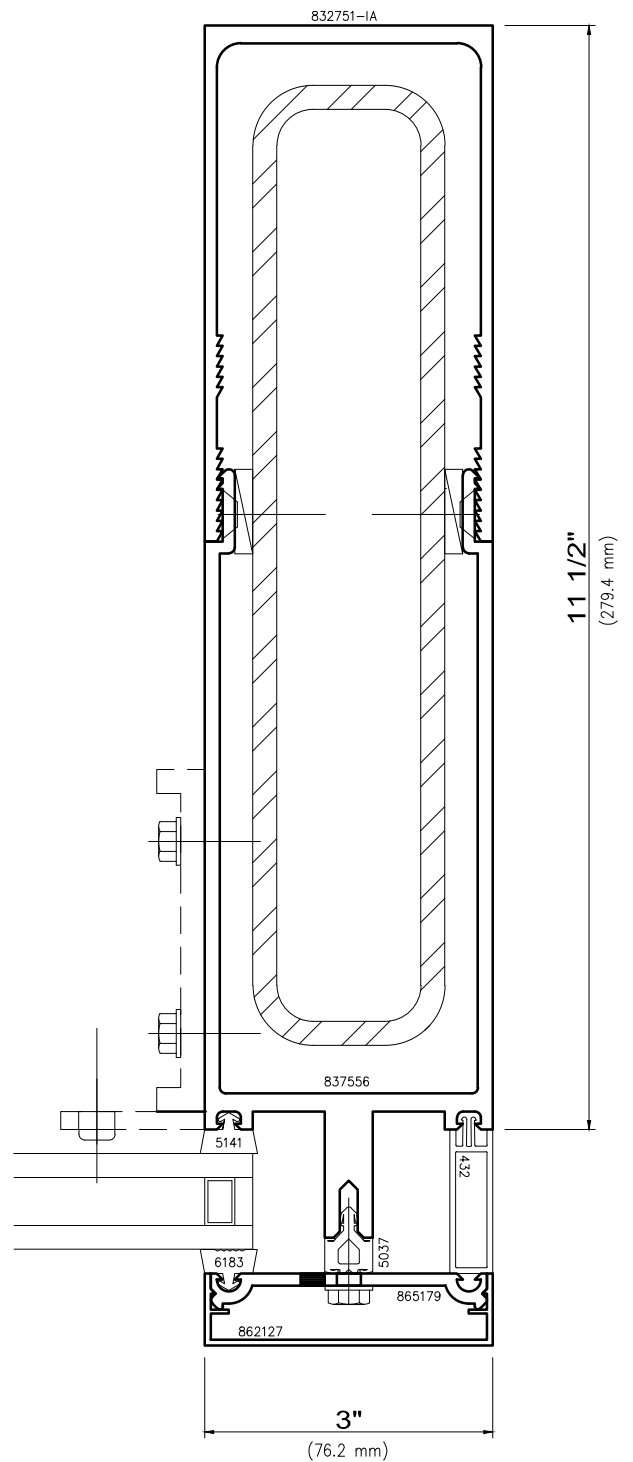
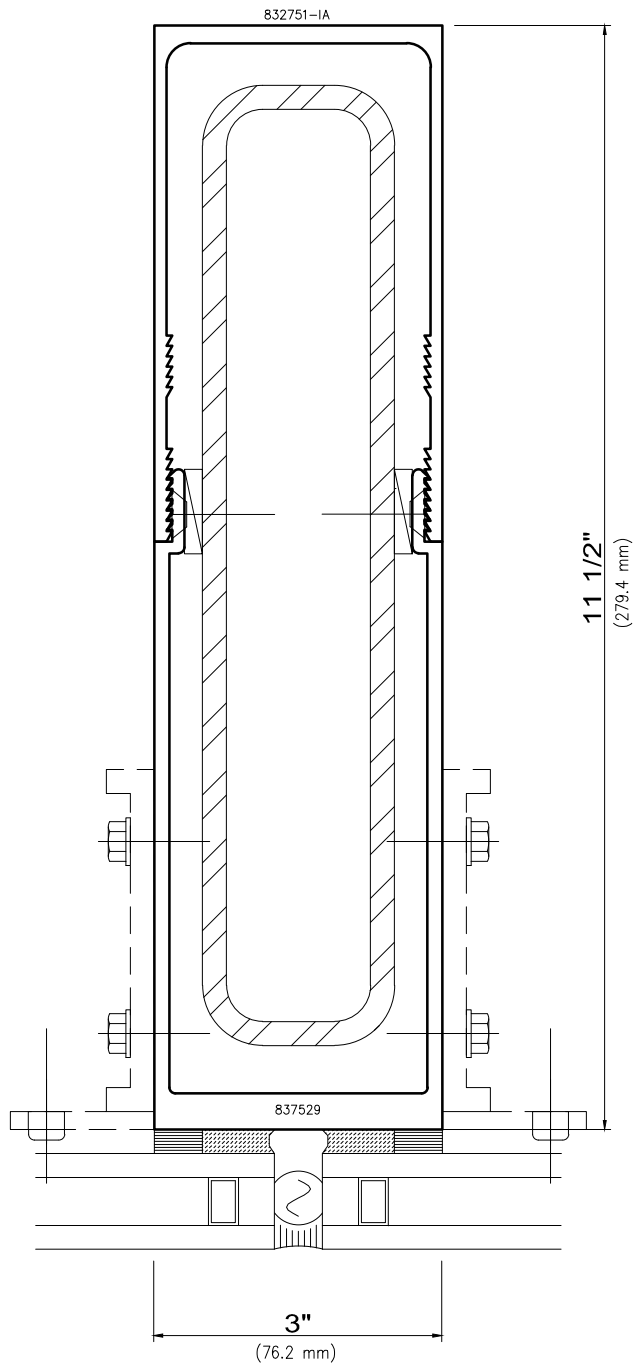
WINDOW AND WALL  
SYSTEMS

Verticals

Curtainwall

STEEL CLADDING Series

Non-stocked items shown – Minimum order quantity may apply





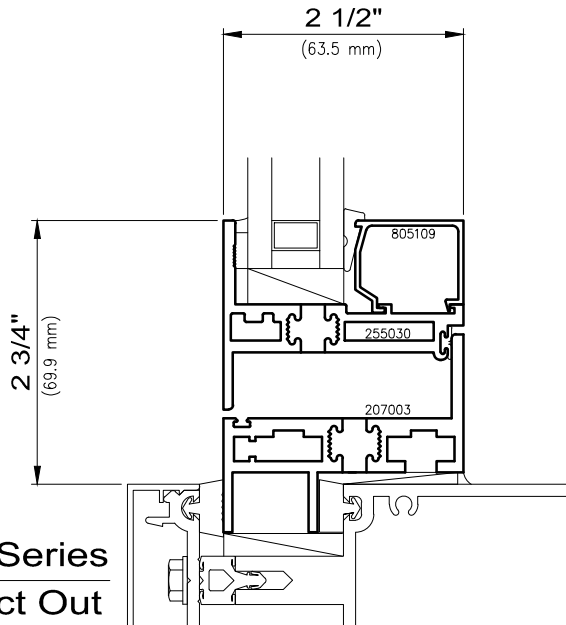
**WAUSAU**

WINDOW AND WALL  
SYSTEMS

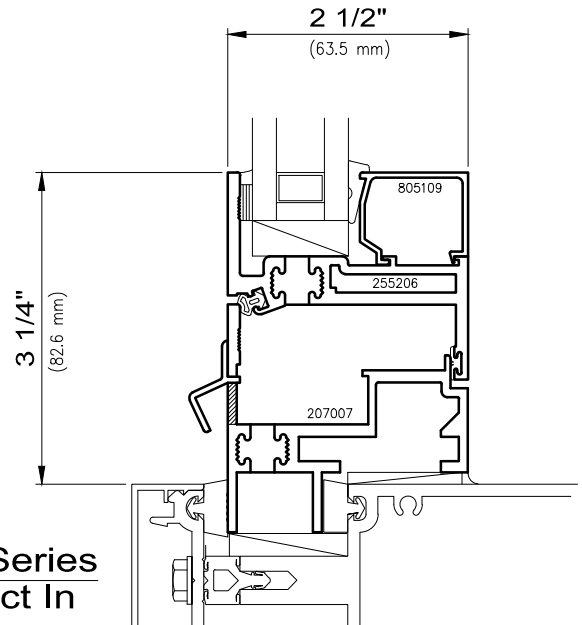
Projected Vent Inserts

Curtainwall

**SUPERWALL™** Series

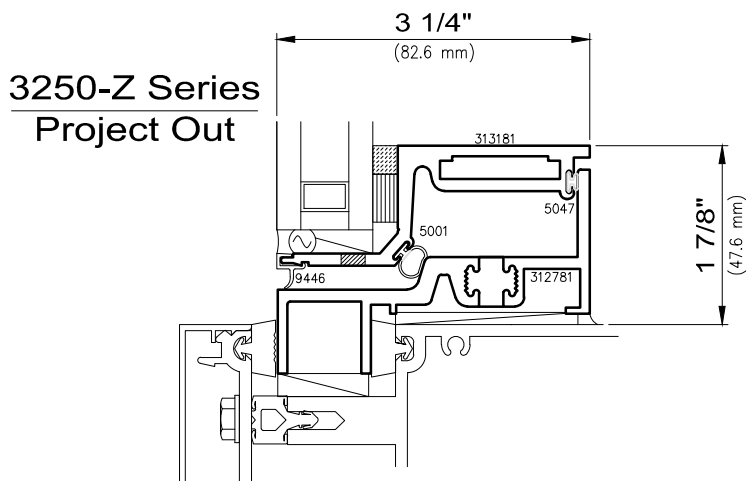


**2250 Series**  
**Project Out**

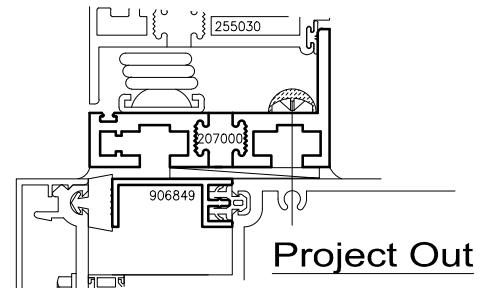


**2250 Series**  
**Project In**

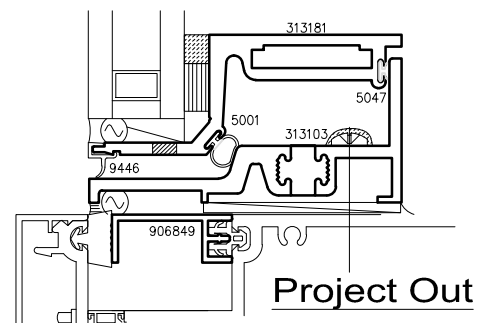
**"Flat Back" Options**



**3250-Z Series**  
**Project Out**



**Project Out**



**Project Out**

For Other Available Inserts, Reference Zero Sightline Section.



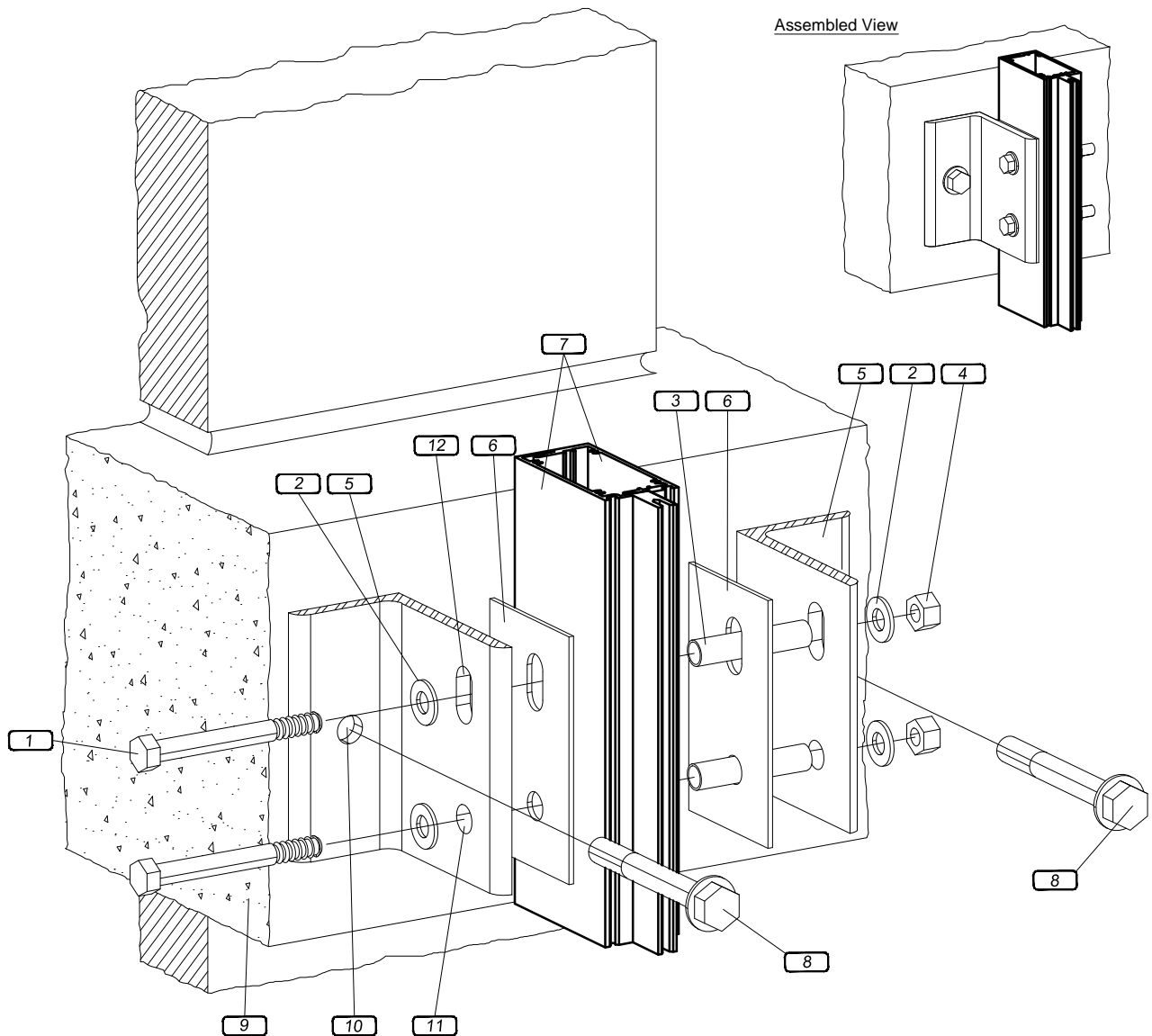
# WAUSAU

WINDOW AND WALL  
SYSTEMS

Installation, Typical Slab Anchor

Curtainwall

SUPERWALL™ Series



#### Typical Connection

- 1 Bolt \*
- 2 Washer
- 3 Pipe Spacer
- 4 Nut

- 5 Steel Angles \*
- 6 1/8" PVC Plates, Size equals the bearing surface of the anchor.
- 7 Heavy Extruded Aluminum Frame Members
- 8 Expansion Anchor \*
- 9 Concrete Floor Slab Typ.

#### Typical Holes

- 10 Anchorage Hole, (Wausau supplies all holes in steel. Erector to match drill aluminum.)
- 11 Steel To Receive Slots At Live Load
- 12 Steel To Receive Clear Holes At Dead Load

\* Note:  
Steel angle, expansion anchor, and thru bolts vary due to wind loads, slab location, and floor height.

Wausau is providing only those components of perimeter fire and/or smoke containment systems that are identified on these drawings as, "by Wausau." Wausau takes no responsibility for other materials or conditions, or for obtaining necessary engineering judgements and/or approvals.



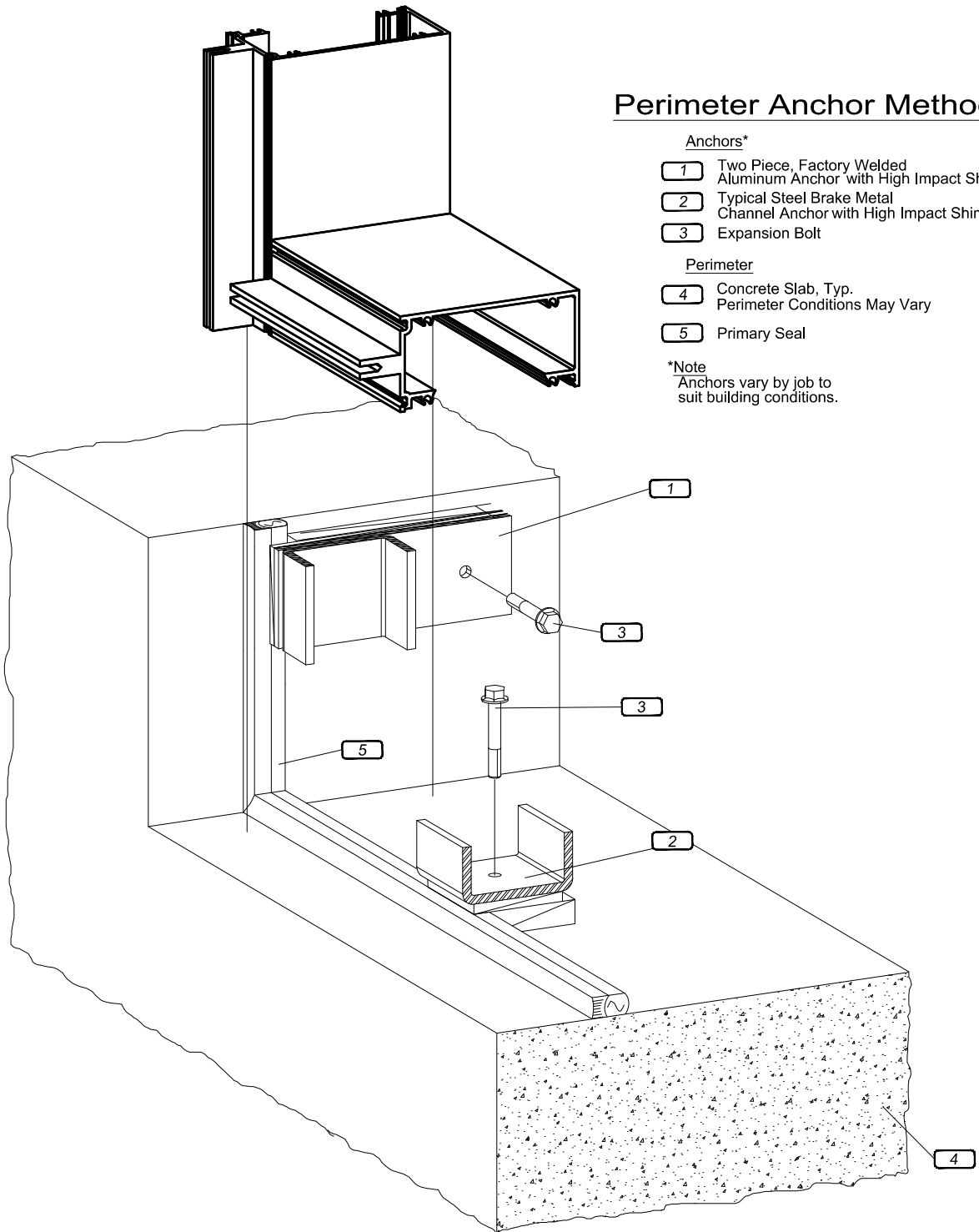
# WAUSAU

WINDOW AND WALL  
SYSTEMS

Isometric Views

Curtainwall

SUPERWALL™ Series





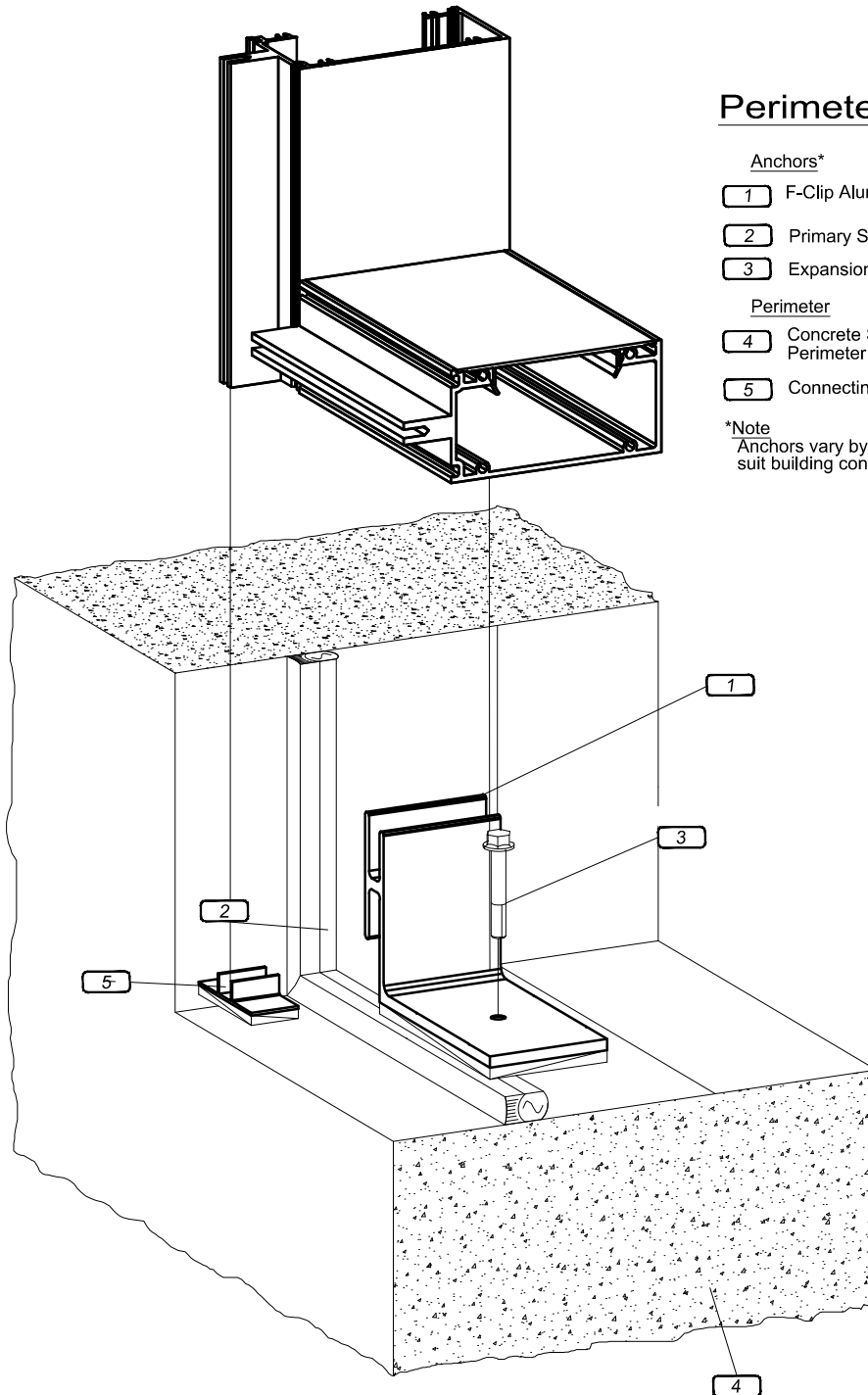
# WAUSAU

WINDOW AND WALL  
SYSTEMS

Isometric Views

Curtainwall

SUPERWALL™ Series



## Perimeter Anchor Method

### Anchors\*

- 1 F-Clip Aluminum Anchor with High Impact Shim
- 2 Primary Seal
- 3 Expansion Bolt

### Perimeter

- 4 Concrete Slab, Typ.  
Perimeter Conditions May Vary
- 5 Connecting Clip with High Impact Shim

\*Note  
Anchors vary by job to  
suit building conditions.



# WAUSAU

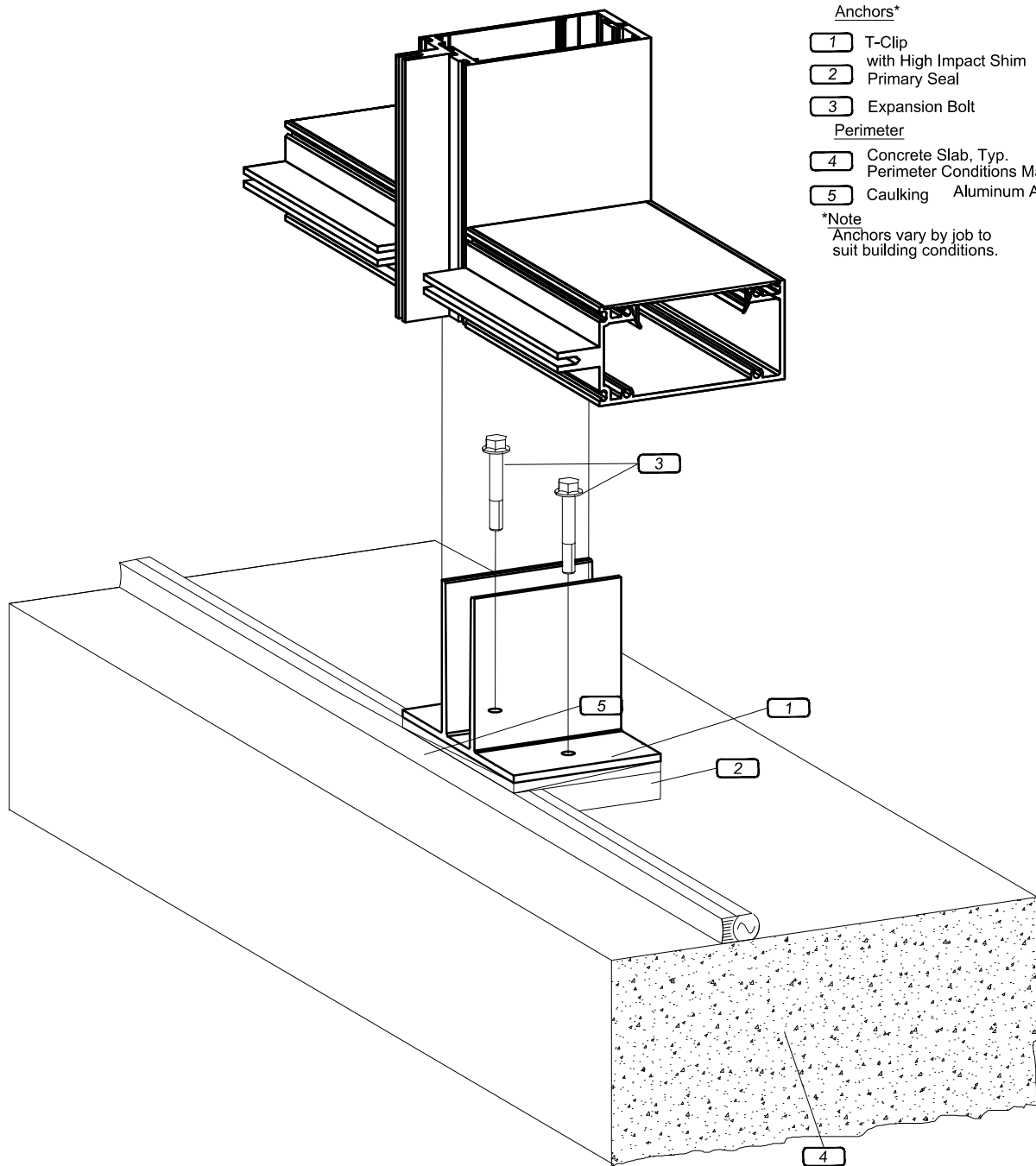
WINDOW AND WALL  
SYSTEMS

Isometric Views

Curtainwall

SUPERWALL™ Series

## Perimeter Anchor Method





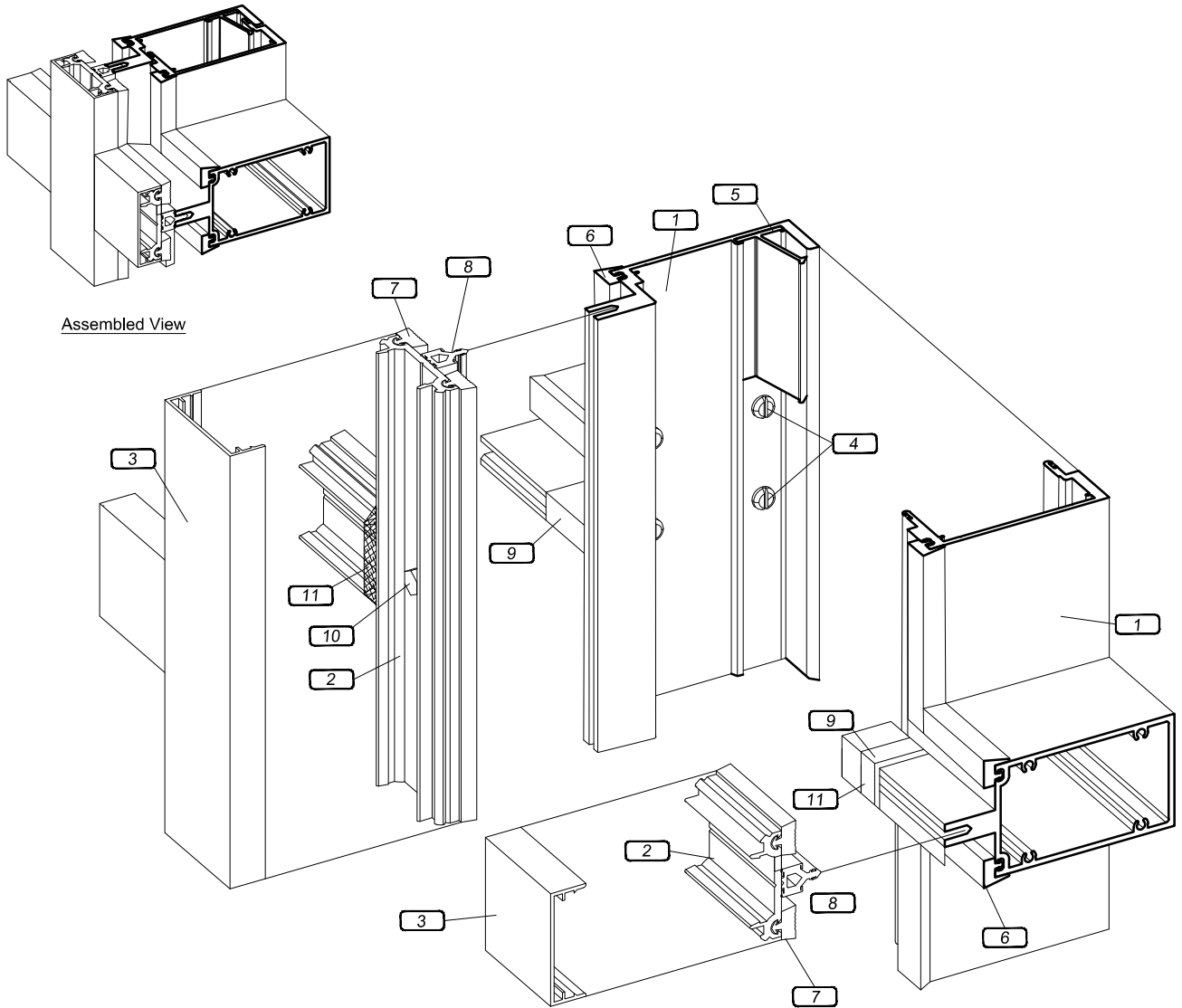
# WAUSAU

WINDOW AND WALL  
SYSTEMS

Fabrication, Exploded View

## Curtainwall

SUPERWALL™ Series



Assembled View

- 1 0.125" Thick Extruded Aluminum Frame Members
- 2 Extruded Aluminum Pressure Plate
- 3 Extruded Aluminum Snap-on Cover (Optional Profiles Available)
- 4 Standard Frame Fastener Is 10-14 x 1 1/2 " Torx T20 Pan Head Stainless Steel Fastener Superwall Anti-Buckle Clip Peen In Place
- 5

- 6 Extruded Sponge EPDM Interior Glazing Gasket
- 7 Extruded Dense EPDM Exterior Glazing Gasket
- 8 EDPM Thermal Separator
- 9 Sponge Zone Dams
- 10 #14 x 1 " Hex Head Stainless Steel Sheet Metal Screw, Type "A"
- 11 Field Applied Sealant