



WAUSAU

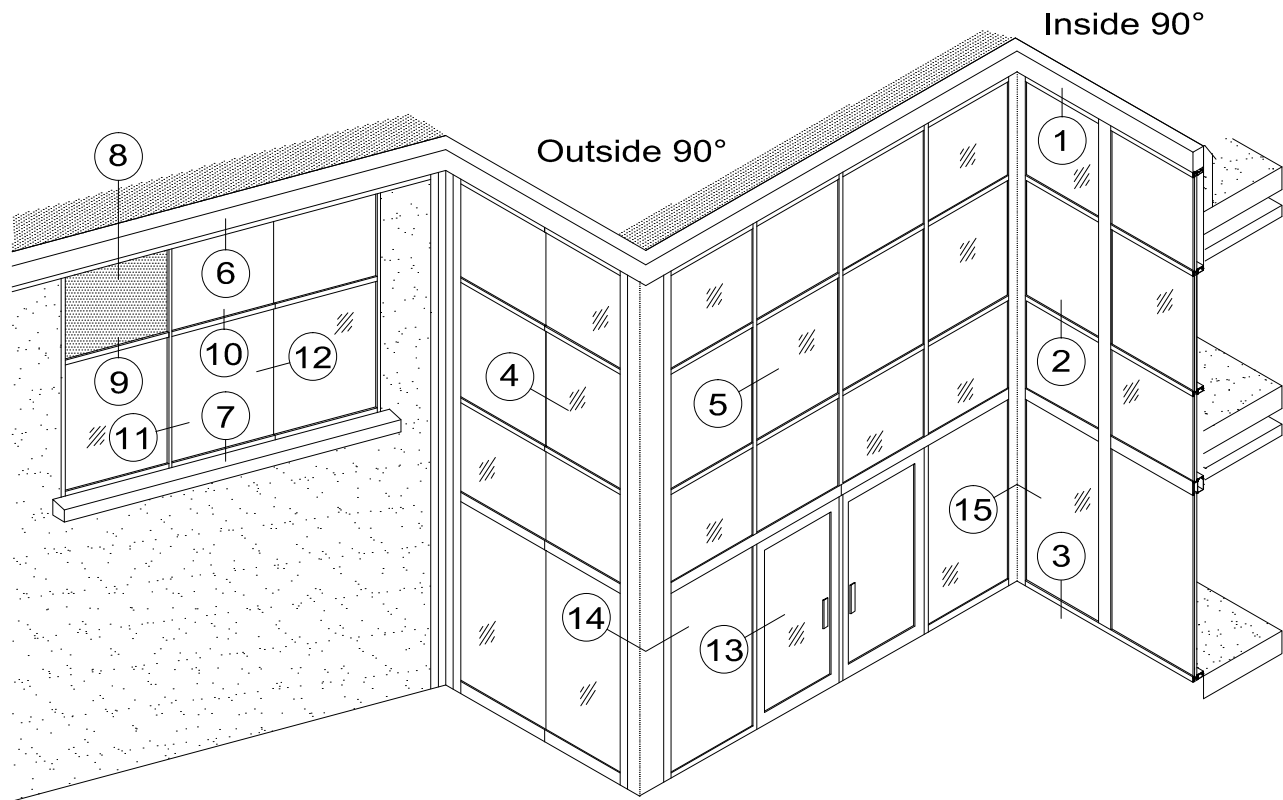
WINDOW AND WALL
SYSTEMS

Elevation

Curtainwall and Window Wall

HP-WALL Series

Elevation Viewed From The Exterior



Section Contents

Page(s)

HP-Wall with 2" Triple Insulating.....	C6-02 and C6-03
HP-Wall with Access Door.....	C6-04 thru C6-07
Door Frame Inserts	C6-08
HP-Wall Corners	C6-09
Glazing Options	C6-10
Vertical Mullion Splices	C6-11
Isometric View	C6-12

HP Wall

Contact A Wausau Representative For Other Possible Configurations.



WAUSAU

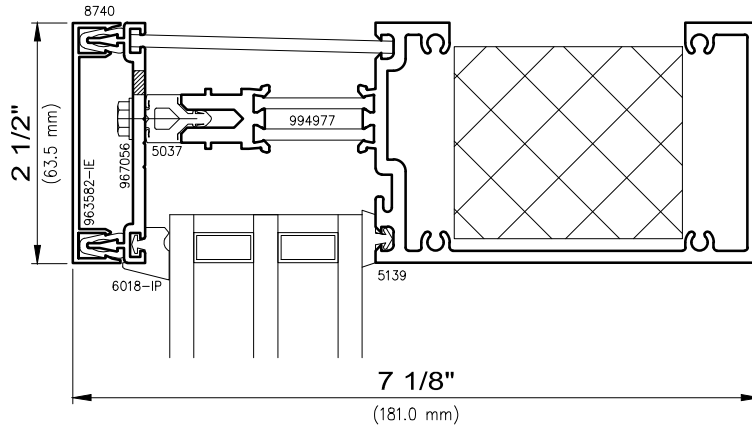
WINDOW AND WALL
SYSTEMS

Triple Glazed

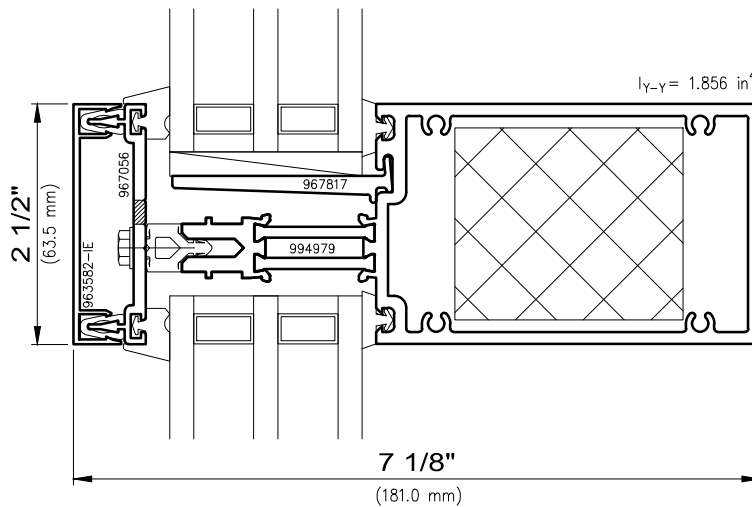
Curtainwall and Window Wall

HP-WALL Series

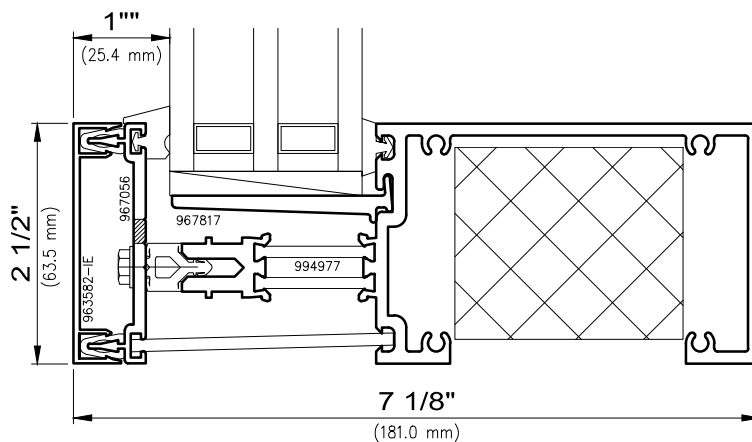
Non-stocked items shown – Minimum order quantity may apply



1 **Perimeter Frame**
Triple Insulating Vision



2 **Intermediate Horizontal Frame**
Triple Insulating Vision



3 **Perimeter Frame**
Triple Insulating Vision

I_{yy}—Values are for Glass Load



WAUSAU

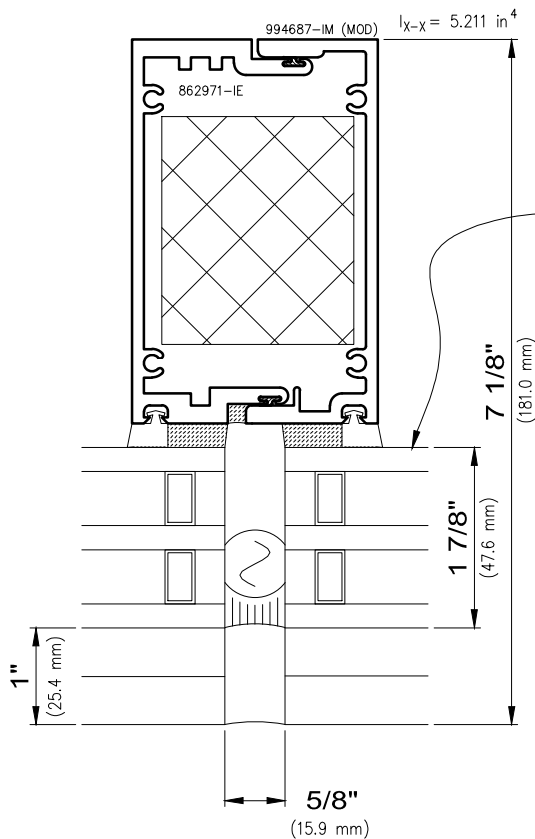
WINDOW AND WALL
SYSTEMS

Triple Glazed

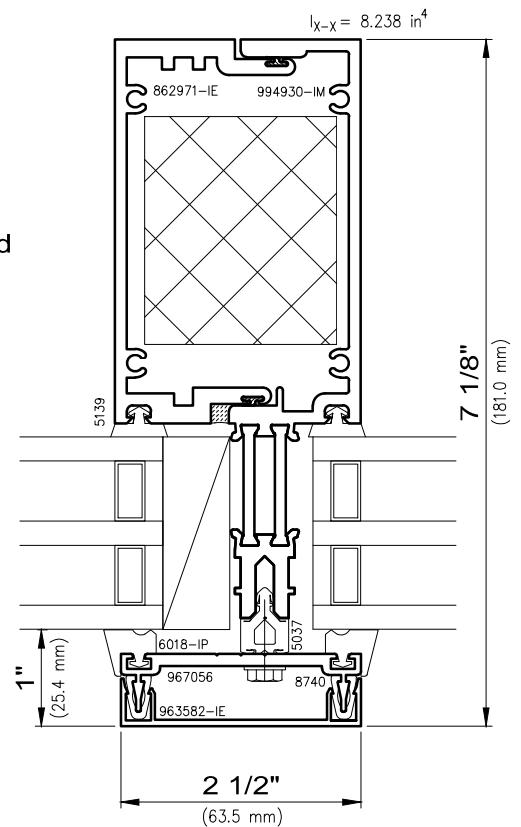
Curtainwall and Window Wall

HP-WALL Series

Non-stocked items shown – Minimum order quantity may apply



Alternate Glass
Thickness Required
To Accomodate
Structural Glazing



4 Structural Glazed Mullion Stacks
Triple Insulating Vision

5 Mullion Stacks
Triple Insulating Vision

I-values indicated are for frame members only.
Thermal barrier shear reduction of 10% included.



WAUSAU

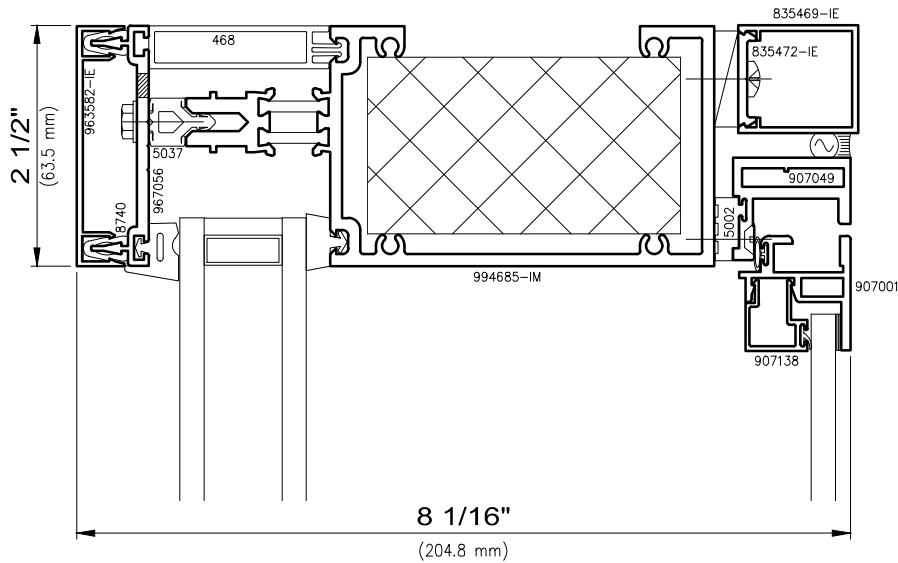
WINDOW AND WALL
SYSTEMS

With Access Door

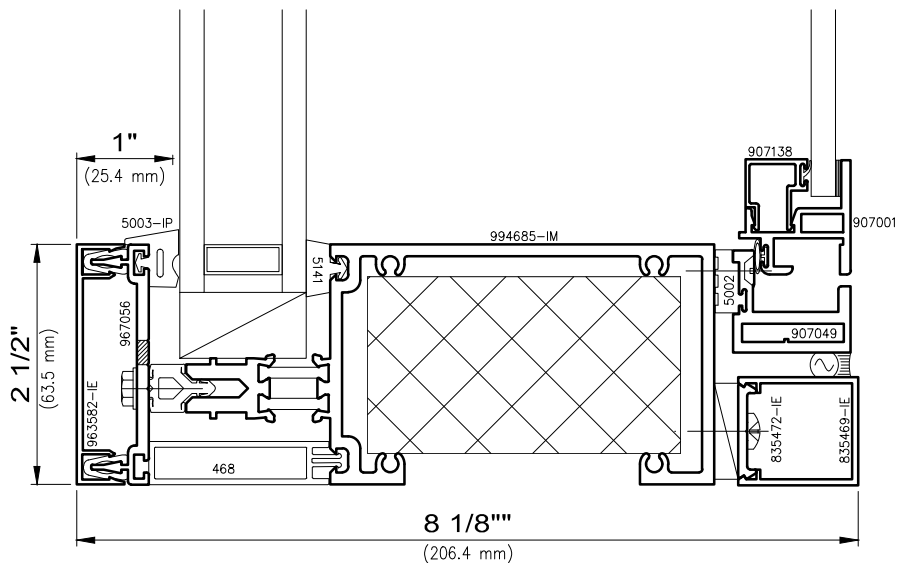
Curtainwall and Window Wall

HP-WALL Series

Non-stocked items shown – Minimum order quantity may apply



6 Perimeter Frame
Insulating Vision



7 Perimeter Frame
Insulating Vision



WAUSAU

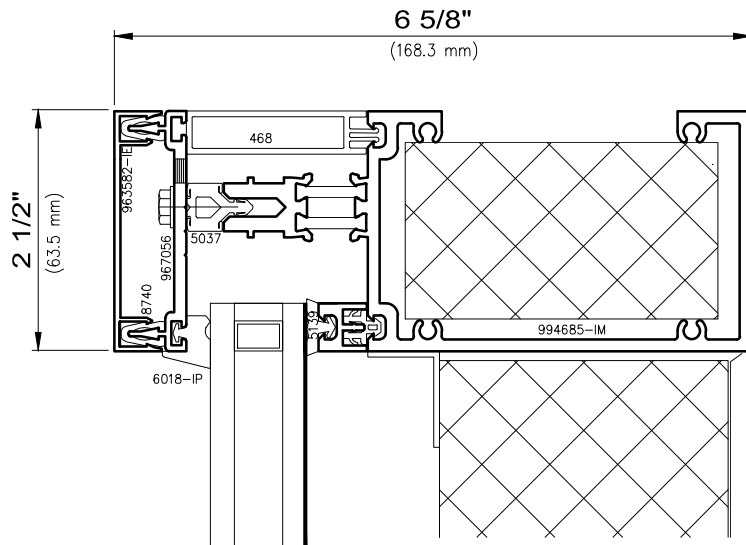
WINDOW AND WALL
SYSTEMS

With Access Door

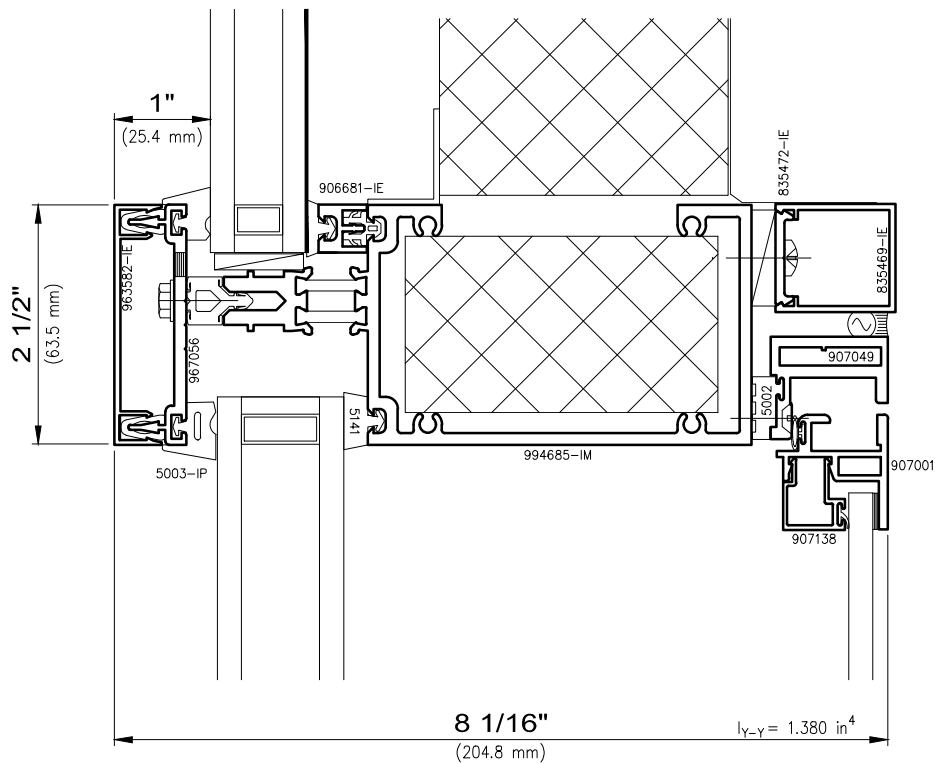
Curtainwall and Window Wall

HP-WALL Series

Non-stocked items shown – Minimum order quantity may apply



8 Perimeter Frame Insulating Spandrel



9 Intermediate Horizontal Frame Insulating Spandrel / Insulating Vision

Iyy-Values are for Glass Load



WAUSAU

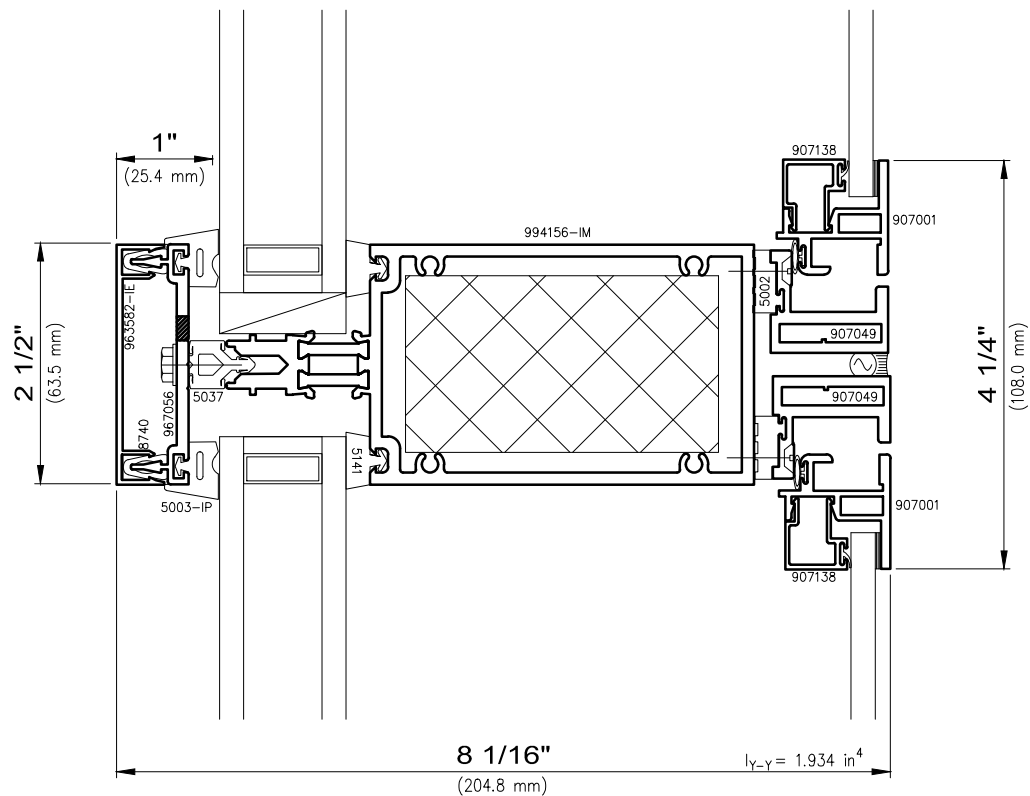
WINDOW AND WALL
SYSTEMS

With Access Door

Curtainwall and Window Wall

HP-WALL Series

Non-stocked items shown – Minimum order quantity may apply



10 Intermediate Horizontal Frame Insulating Vision / Insulating Vision

l_{yy}—Values are for Glass Load



WAUSAU

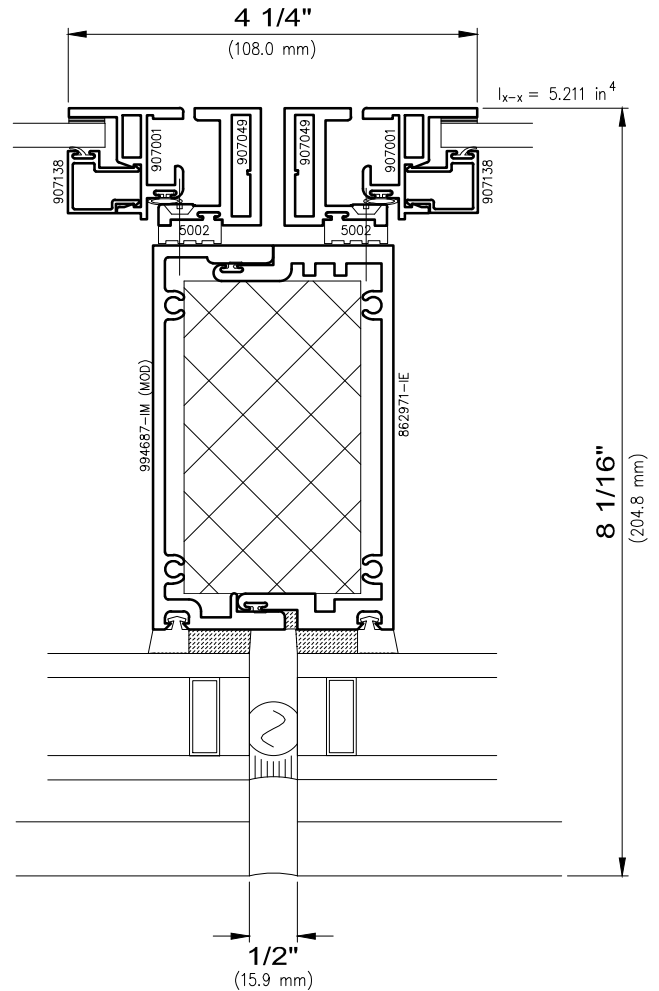
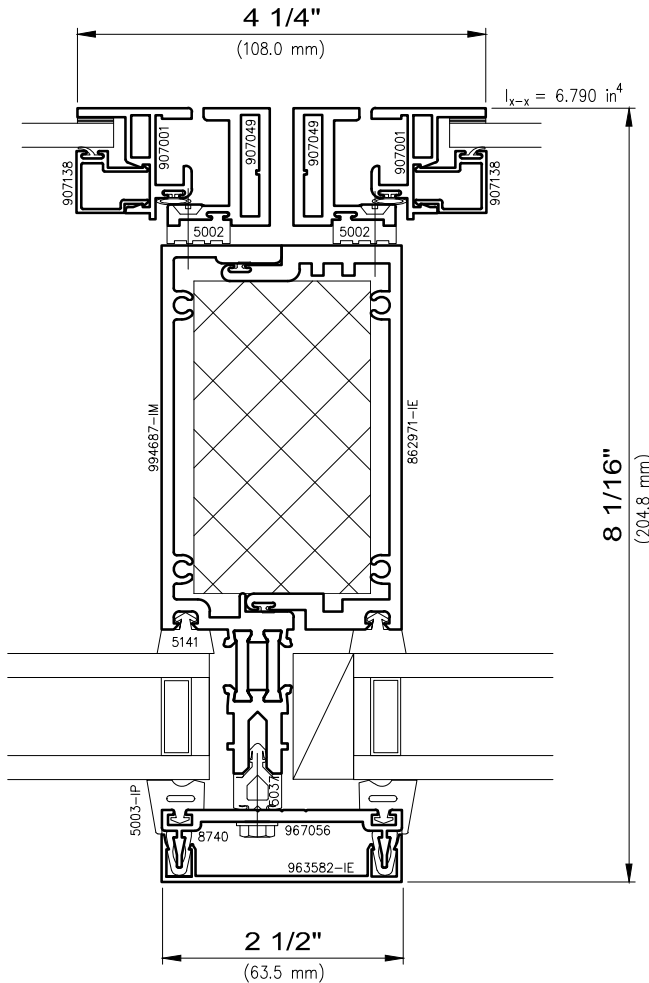
WINDOW AND WALL
SYSTEMS

With Access Door

Curtainwall and Window Wall

HP-WALL Series

Non-stocked items shown – Minimum order quantity may apply



11 Mullion Stacks
Insulating Vision / Insulating Vision

12 Structural Glazed Mullion Stacks
Insulating Vision / Insulating Vision

I-values indicated are for frame members only.
Thermal barrier shear reduction of 10% included.



WAUSAU

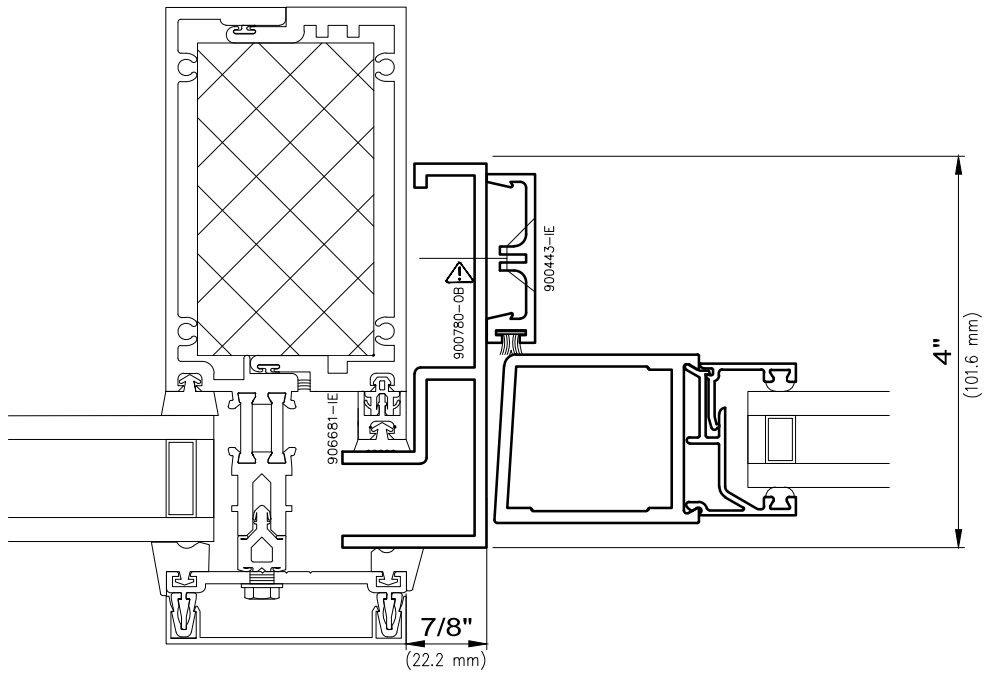
WINDOW AND WALL
SYSTEMS

Door Frame Inserts

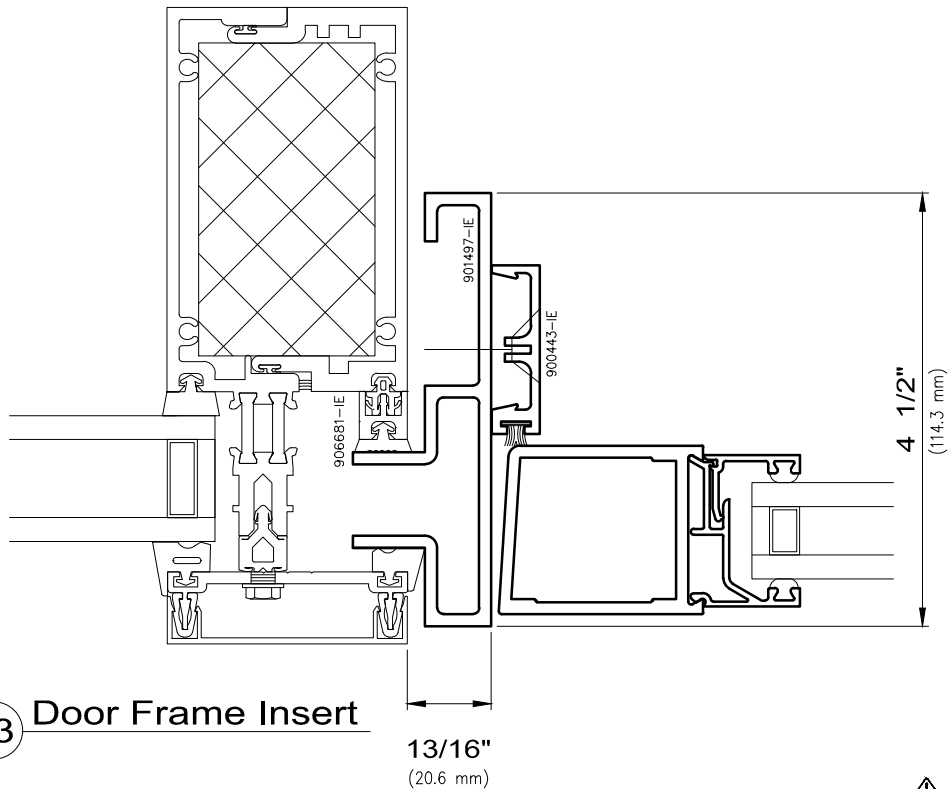
Curtainwall and Window Wall

HP-WALL Series

Non-stocked items shown – Minimum order quantity may apply



13 Offset Door Frame Insert



13 Door Frame Insert

⚠ – OBSOLETE TOOLING STATUS



WAUSAU

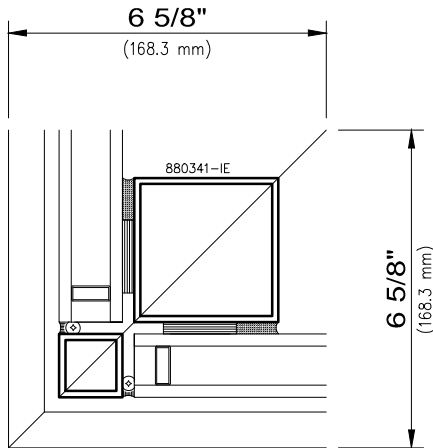
WINDOW AND WALL
SYSTEMS

Corners

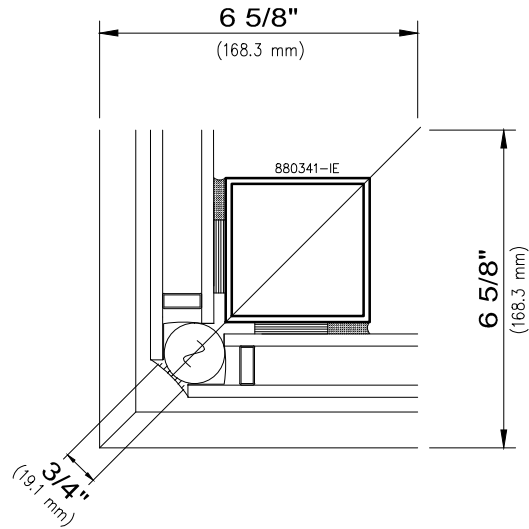
Curtainwall and Window Wall

HP-WALL Series

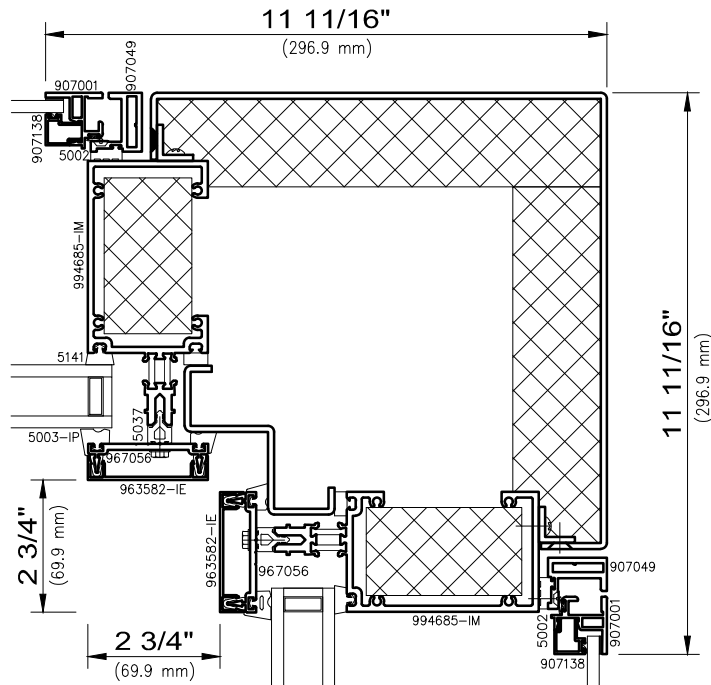
Non-stocked items shown – Minimum order quantity may apply



14 Outside 90° Corner
Structural Glazed



14 Outside 90° Corner (Alternate)
Structural Glazed



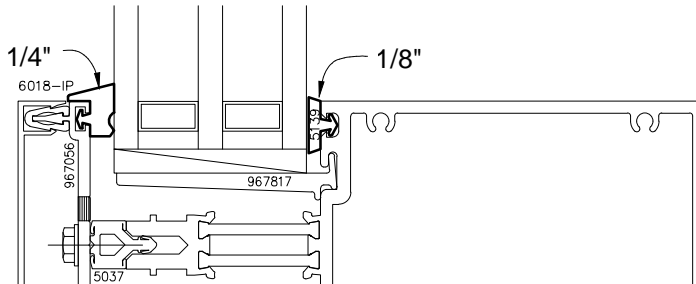
15 Inside 90° Corner Mullion
(SHOWN WITH OPTIONAL S.E.A.L. WINDOW)

Curtainwall and Window Wall

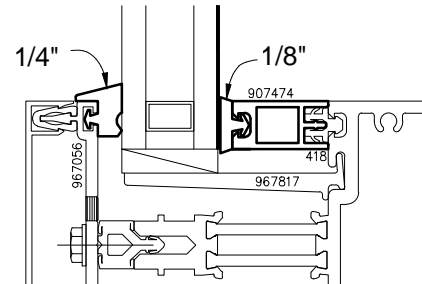
HP-WALL Series

Non-stocked items shown – Minimum order quantity may apply

2" Insulating Glass



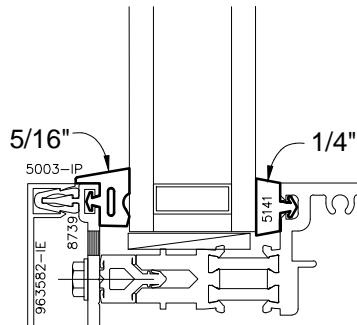
1" Insulating Spandrel Glass



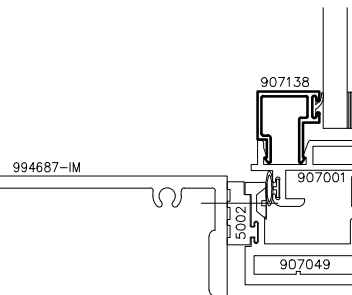
Triple Insulating Glazing

Glazing Insert

1 5/16" Insulating Glass



1/4" Glass

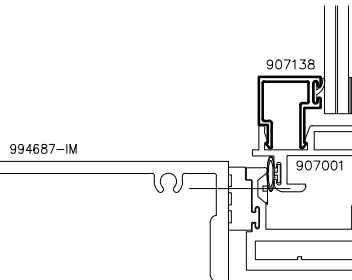
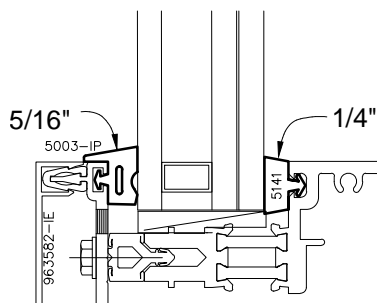


Triple Glazing With Access Door

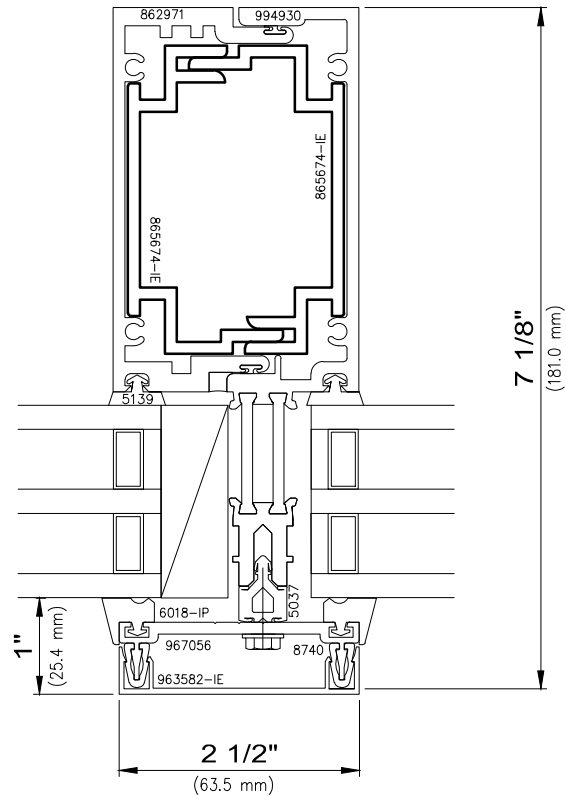
1 5/16" Insulated Laminated

1/4" Laminated Glass

Low E Coating On
Exterior Light Only



Laminated Triple Glazing



Vertical Mullion Splice



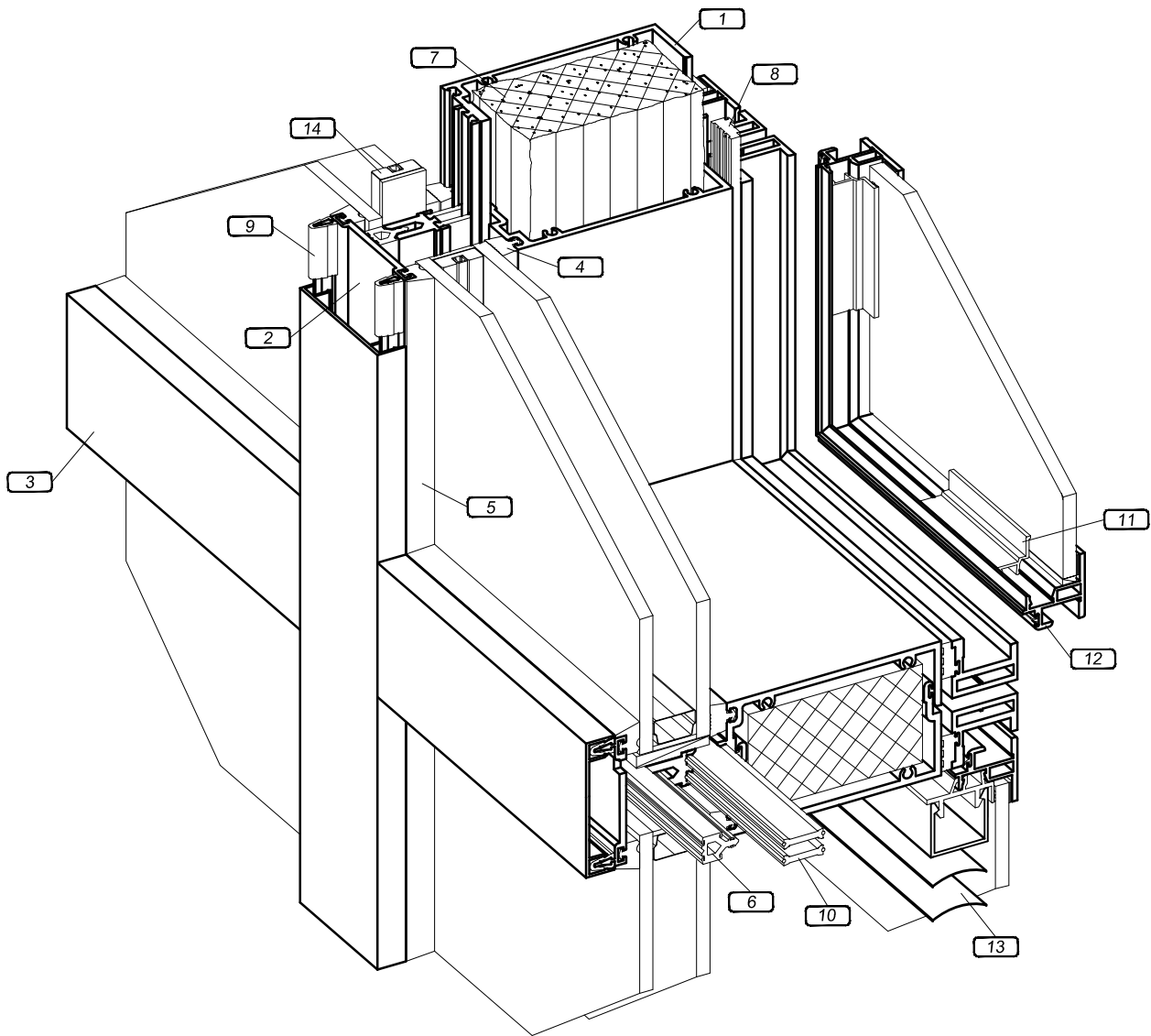
WAUSAU

WINDOW AND WALL
SYSTEMS

Exploded View

Curtainwall and Window Wall

HP-WALL Series



- 1 0.125" Thick Extruded Aluminum Frame Members
- 2 Extruded Aluminum Pressure Plate
- 3 Extruded Aluminum Snap-On Cover (Optional Profiles Available)
- 4 Extruded Sponge EPDM Interior Glazing Gasket
- 5 Extruded Dense EPDM Exterior Glazing Gasket
- 6 EPDM Thermal Separator
- 7 Rigid or Semi-Rigid Insulation Installed Into Window Cavities

- 8 Dual Durometer Rigid/Flexible PVC Thermal Separator And Air Seal
- 9 Rigid PVC Thermal Separator Clip
- 10 Continuous Polyamide Nylon, Mechanically Crimped Into Cross-Knurled Cavities
- 11 Dual Durometer Rigid/Flexible PVC Access Door Glazing Clip Interior Access Panel (Optional) Hinged or Lift Out Available
- 12 Venetian Blind (Optional)
- 13 13/16" Warm Edge Insulating Glass Spacer