



WAUSAU

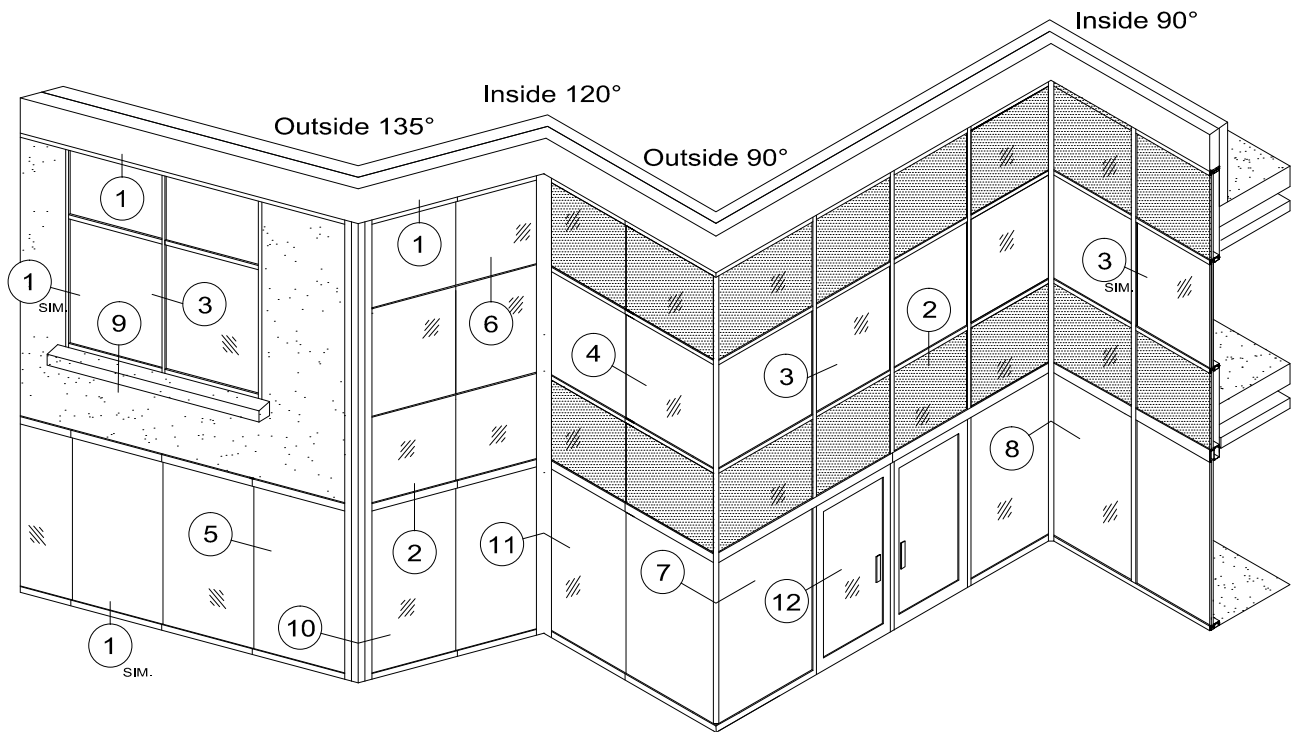
WINDOW AND WALL
SYSTEMS

Elevation

Curtainwall

HP-WALL™ Series

Elevation Viewed From The Exterior



Section Contents

Page(s)

| | |
|------------------------------|------------------|
| Face Details | C6-02 thru C6-06 |
| HP-Wall Corners | C6-07 thru C6-08 |
| Trim Covers | C6-9 |
| Door Frame Inserts | C6-10 |
| Glazing Options | C6-11 |
| Mullion Splices | C6-12 |
| Projected Vent Inserts | C6-13 |
| Isometric Views | C6-14 thru C6-17 |

HP-Wall

Contact A Wausau Representative For Other Possible Configurations.



WAUSAU

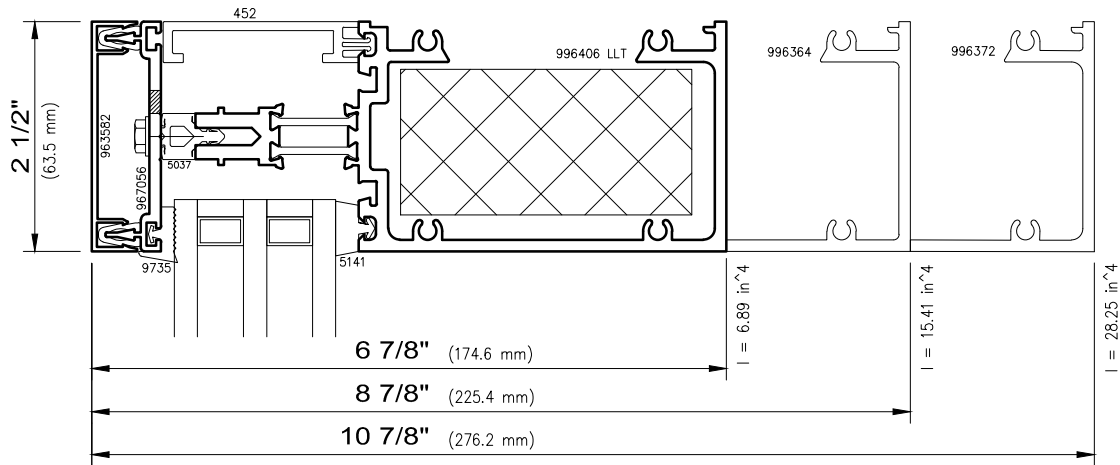
WINDOW AND WALL
SYSTEMS

6250/ 8250/ 10250 HP

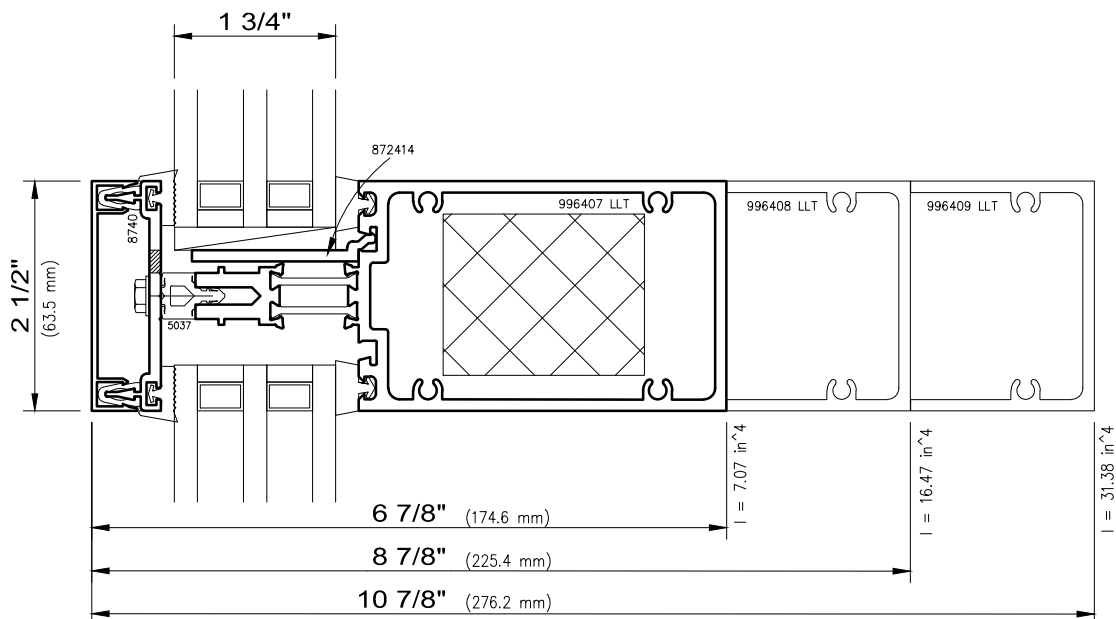
Curtainwall

HP-WALL™ Series

Non-stocked items shown – Minimum order quantity may apply
LLT – longer lead times may apply



1 Perimeter Frame



2 Vision/Spandrel Intermediate

I – values indicated for thermal barriers are for frame members only. Thermal barrier shear reduction of 10% included



WAUSAU

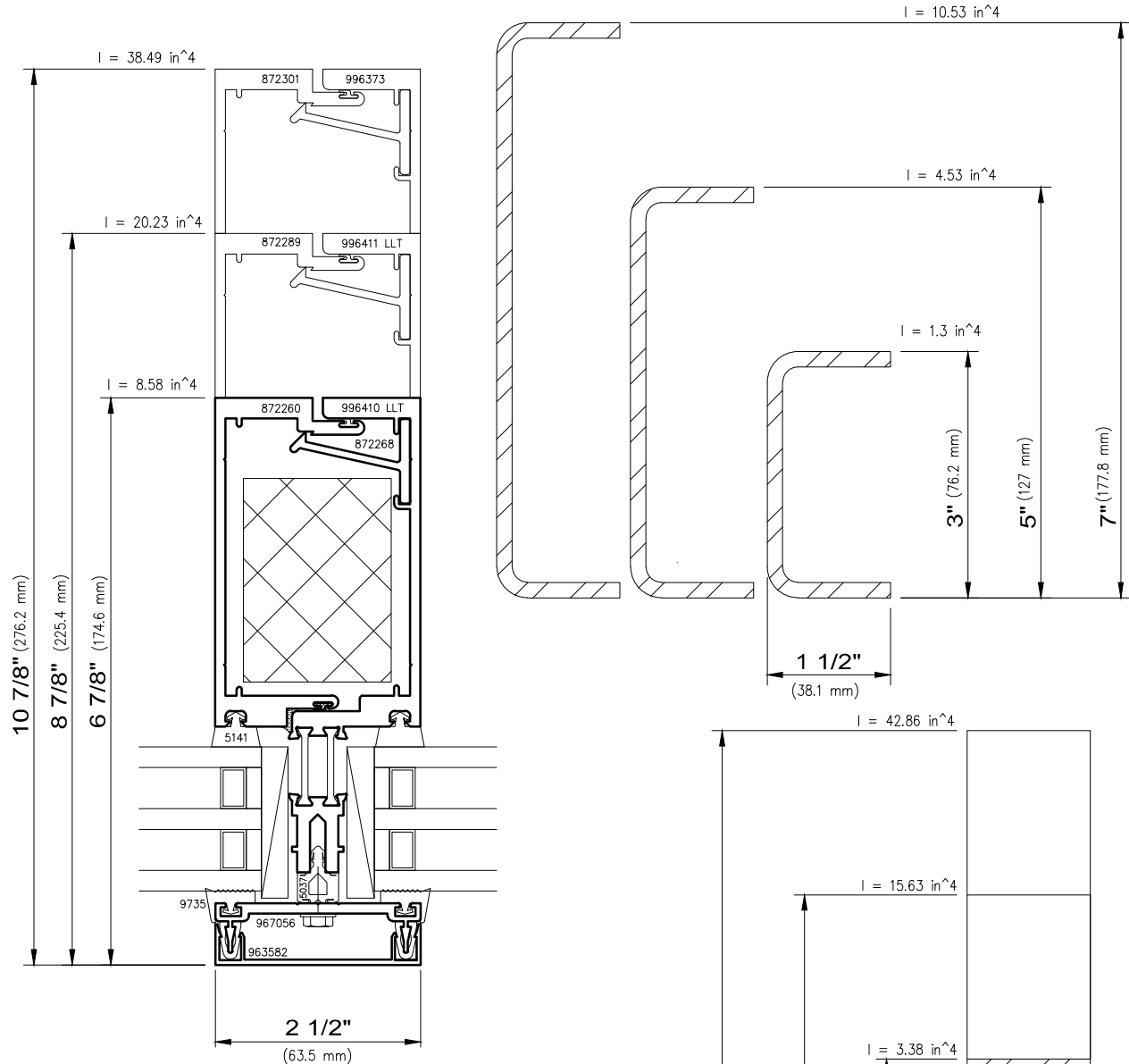
WINDOW AND WALL
SYSTEMS

6250/ 8250/ 10250 HP

Curtainwall

HP-WALL™ Series

Non-stocked items shown – Minimum order quantity may apply
LLT – longer lead times may apply



3

Mullion Stacks

NOTE: I-VALUES OF
STEEL REINFORCING
CAN BE MULTIPLIED BY
2.9 BEFORE ADDING TO
ALUMINUM MULLION
I-VALUE

[E (Steel) = 2.9E7 psi, E (Alum) = 1.0E7 psi]

I – values indicated for thermal barriers are for frame
members only. Thermal barrier shear reduction of 10% included



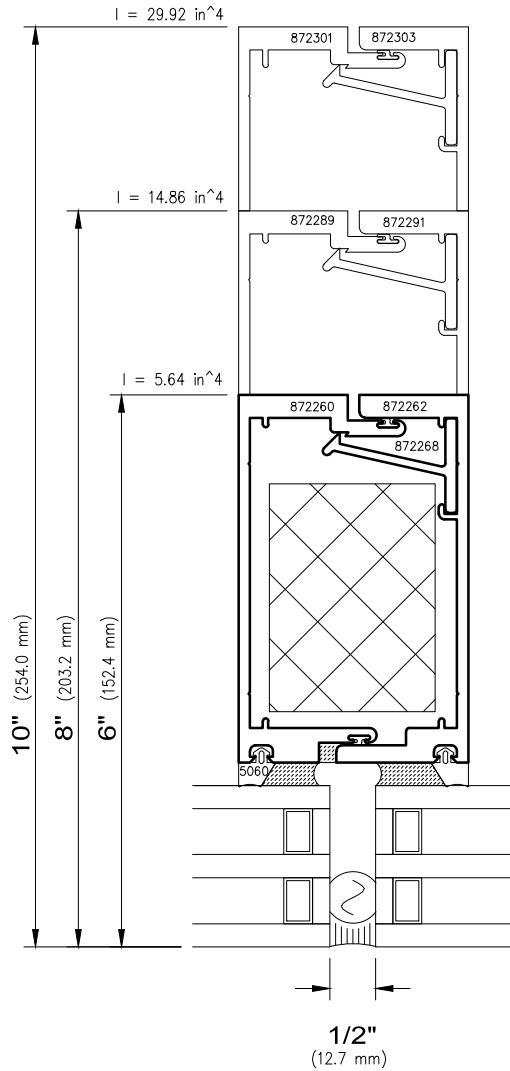
WAUSAU

WINDOW AND WALL
SYSTEMS

6250/ 8250/ 10250 HP

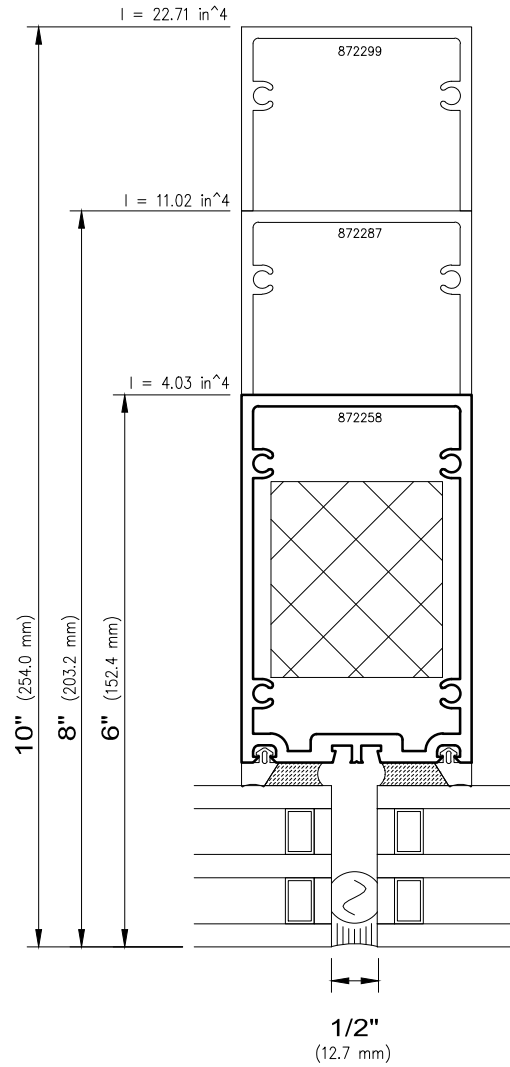
Curtainwall

HP-WALL™ Series



4

Structural Glazed Stacks



5

Intermediate



WAUSAU

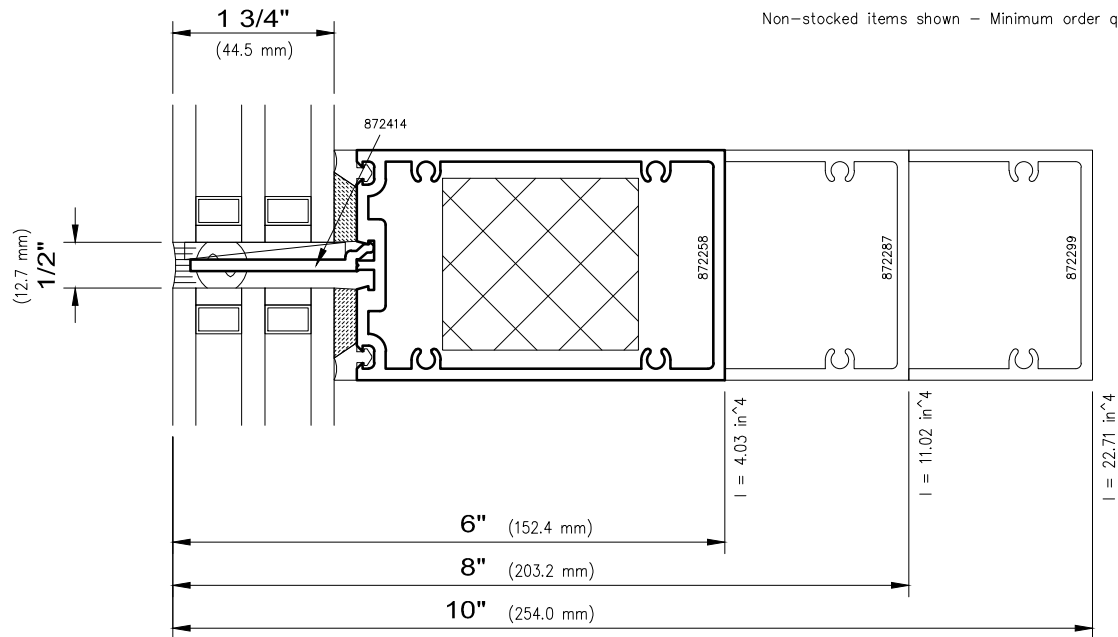
WINDOW AND WALL
SYSTEMS

Horizontals

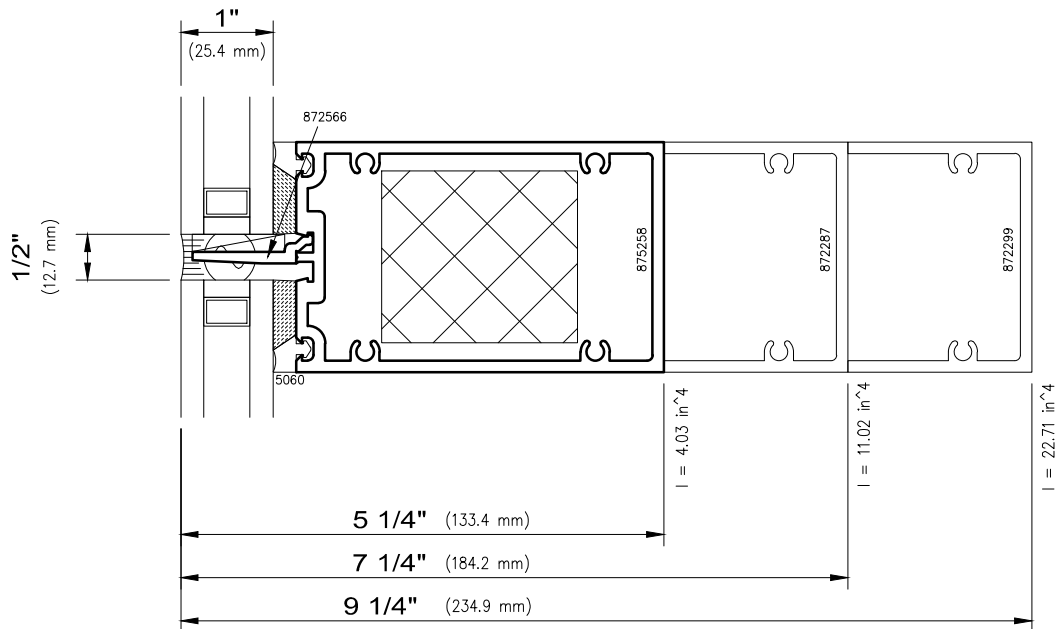
Curtainwall

HP-WALL™ Series

Non-stocked items shown – Minimum order quantity may apply



6 Intermediate 1 3/4" Glass
Structural Glazed



6 alt. Intermediate 1" Glass
Structural Glazed



WAUSAU

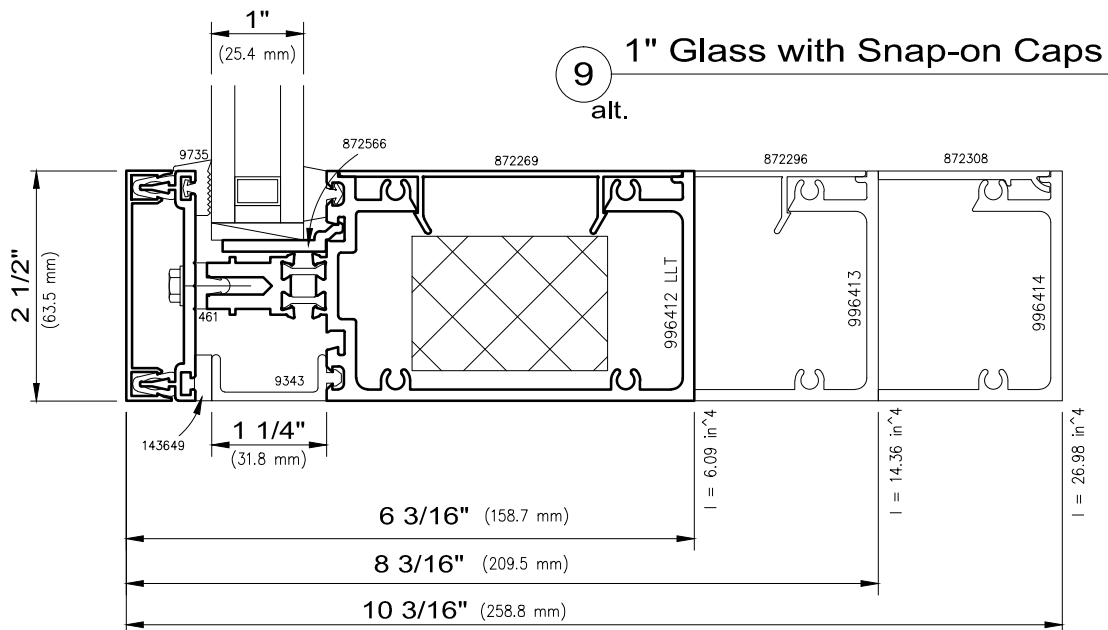
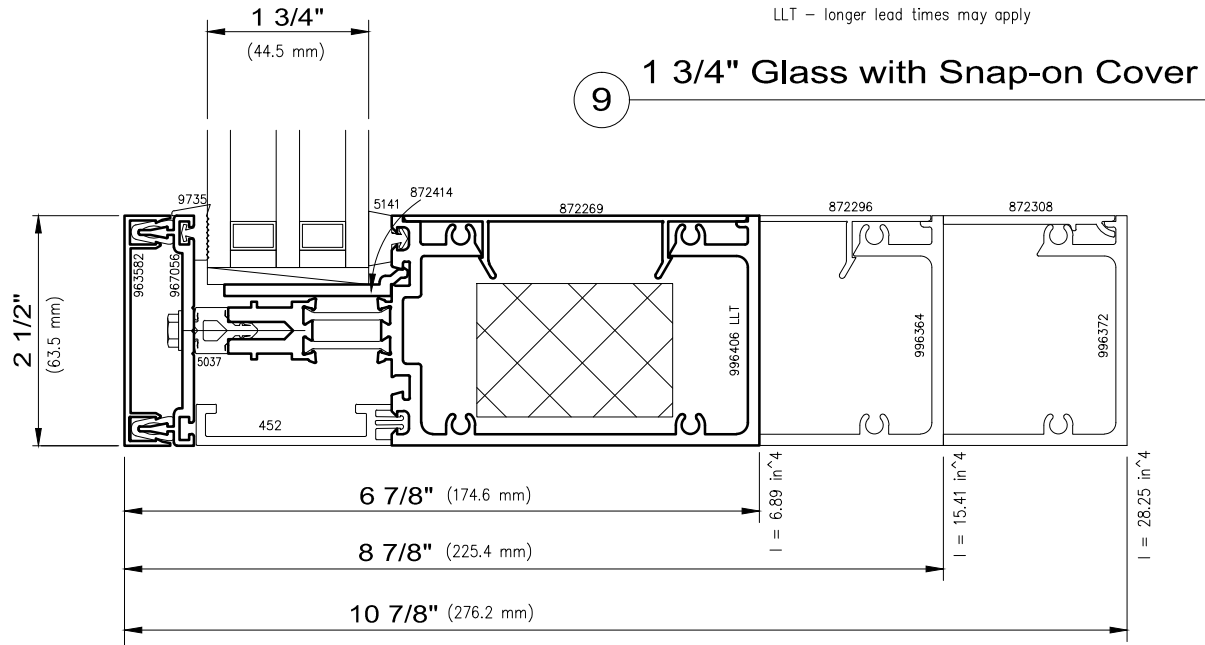
WINDOW AND WALL
SYSTEMS

PERIMETER FRAME WITH SNAP COVER

Curtainwall

HP-WALL™ Series

Non-stocked items shown – Minimum order quantity may apply
LLT – longer lead times may apply



I – values indicated for thermal barriers are for frame members only. Thermal barrier shear reduction of 10% included



WAUSAU

WINDOW AND WALL
SYSTEMS

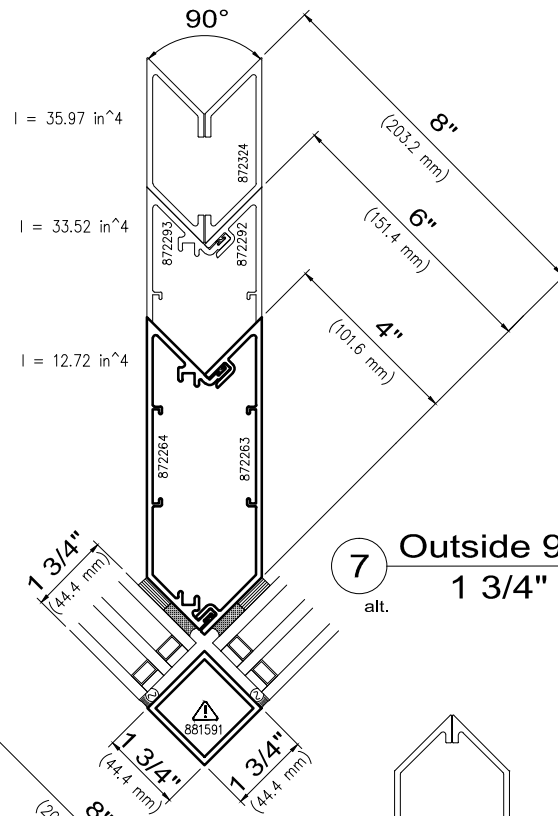
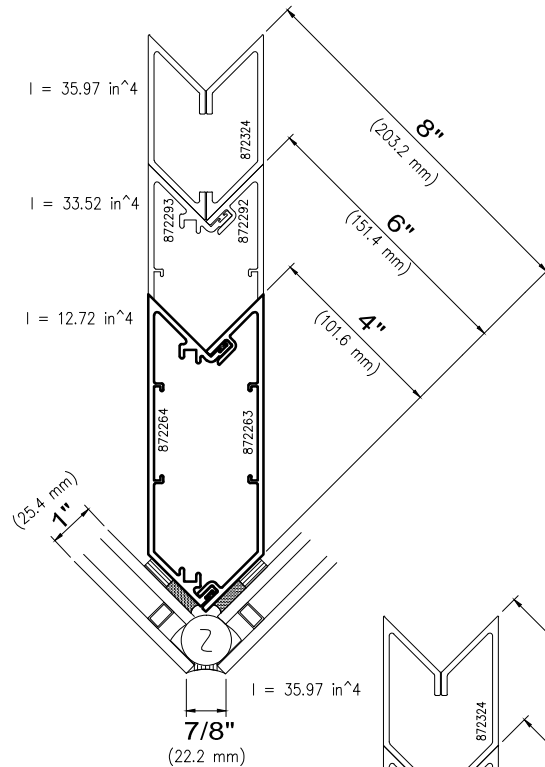
Corners

Curtainwall

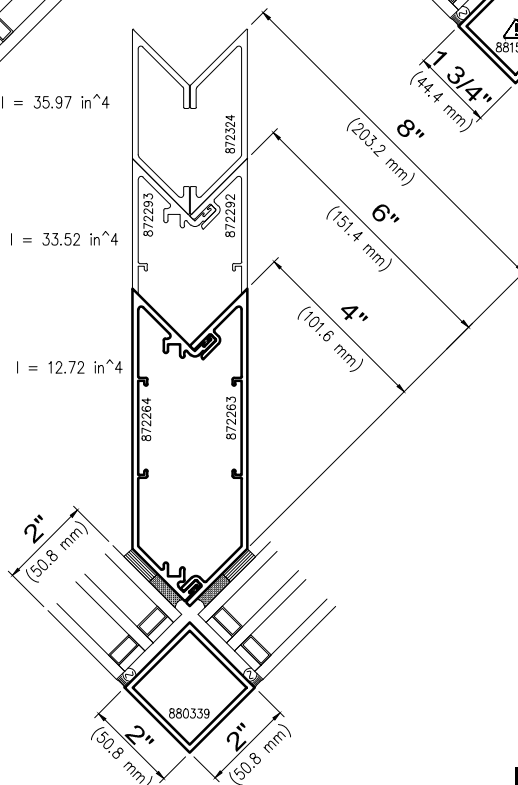
HP-WALL™ Series

Non-stocked items shown - Minimum order quantity may apply

**7 Outside 90° Corner
Structural Glazed**

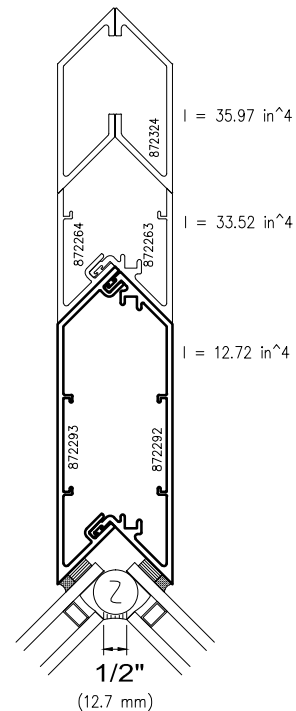


**7 Outside 90° Corner
1 3/4" Glass**



**7 Outside 90° Corner
2" Glass**

**8 Inside 90° Corner
Structural Glazed**



alt. - OBSOLETE TOOLING STATUS

SCALE: 3" = 1'-0"

C6-7

© 2018 Apogee Wausau Group, Inc.



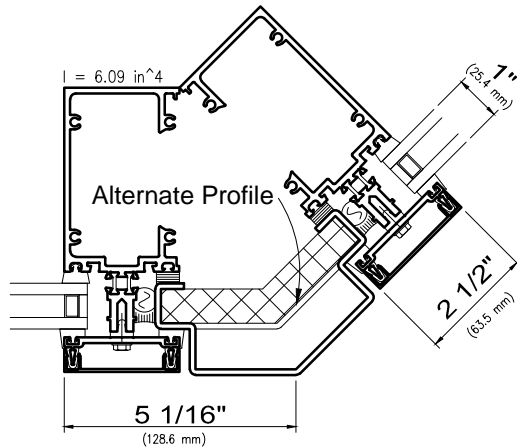
WAUSAU

WINDOW AND WALL
SYSTEMS

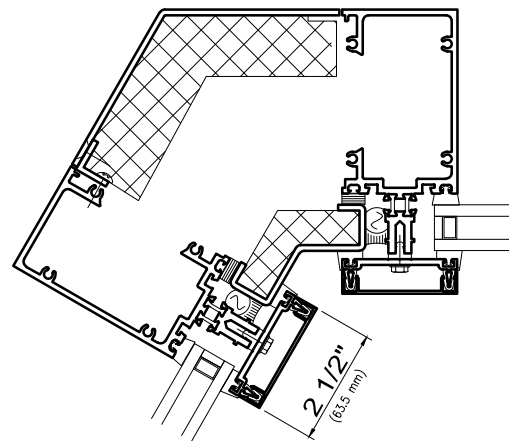
Corners, 6250HP Series illustrated

Curtainwall

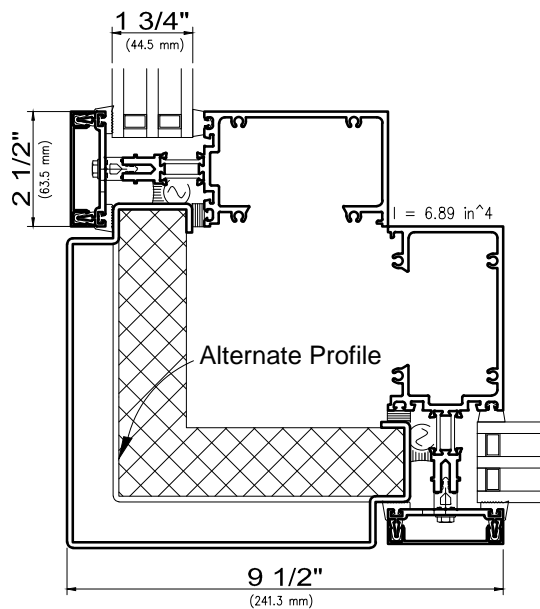
HP-WALL™ Series



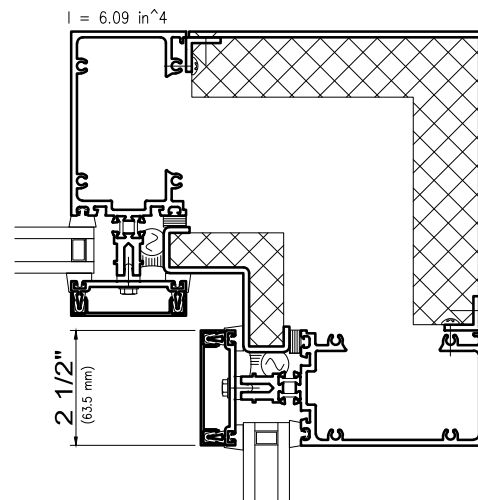
10 Outside 135° Corner Mullion
1" Glass



11 Inside 120° Corner Mullion
1" Glass



Outside 90° Corner Mullion
0.125" Formed Aluminum



Inside 90° Corner Mullion
1" Glass

I – values indicated for thermal barriers are
for frame members only. Thermal barrier
shear reduction of 10% included



WAUSAU

WINDOW AND WALL
SYSTEMS

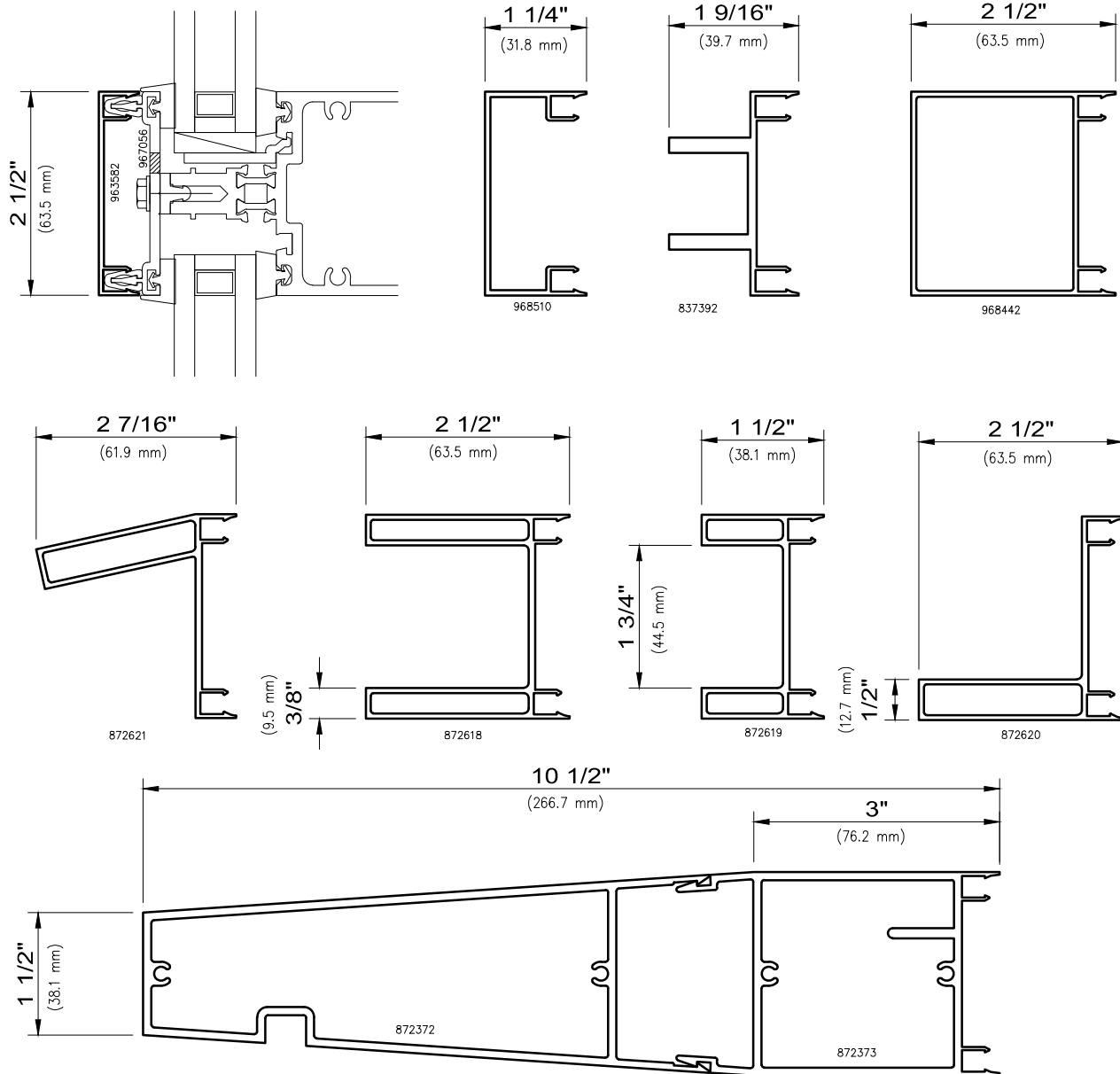
Trim Covers

Curtainwall

HP-WALL™ Series

Non-stocked items shown – Minimum order quantity may apply

2 1/2" Exterior Trim Covers



Non-standard deep exterior snap-on covers (those extending more than 2" from the face of glass) may need to be secured by methods other than snap fits. It is the responsibility of the installer to verify applied loads from maintenance equipment, staging, scaffolding or other exterior access devices, regardless of whether such requirements are included in contract documents, and add mechanical attachment provisions as necessary. Wausau's structural engineering department is available to assist in analysis of loading. Dynamic wind loads, as well as the potential for build-up of ice or snow, should also be considered.



WAUSAU

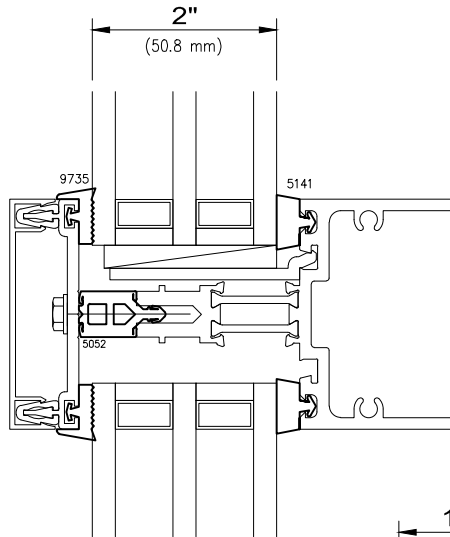
WINDOW AND WALL
SYSTEMS

Glazing Options

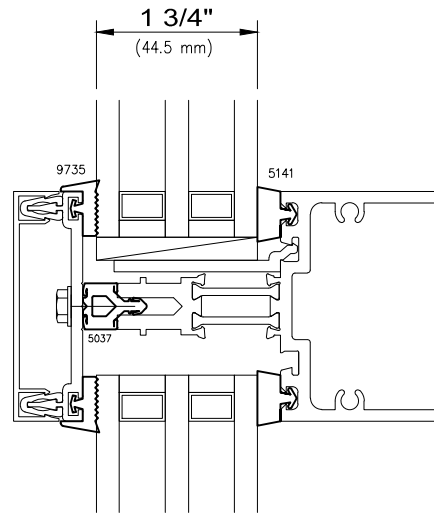
Curtainwall

HP-WALL™ Series

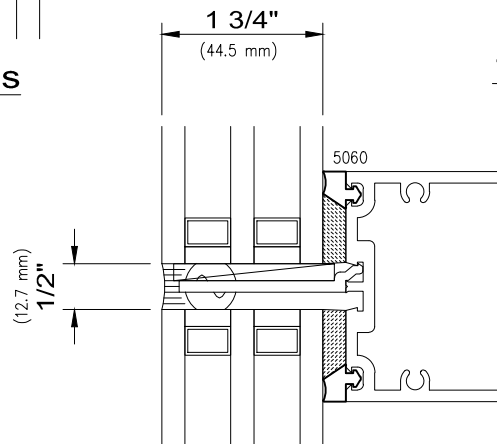
Non-stocked items shown – Minimum order quantity may apply



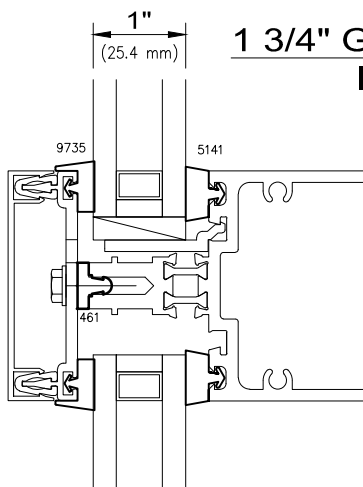
2" Glass



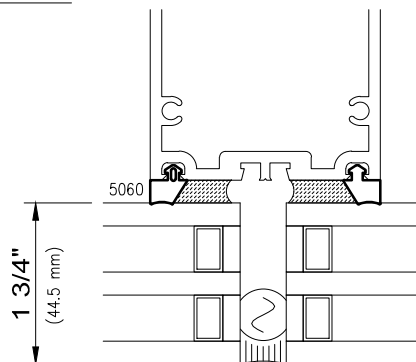
1 3/4" Glass



**1 3/4" Glass Interior glazed
Intermediate**



1" Glass



1 3/4" Glass Structural Glazed

Contact A Wausau Representative For Other Possible Glazing Options.



WAUSAU

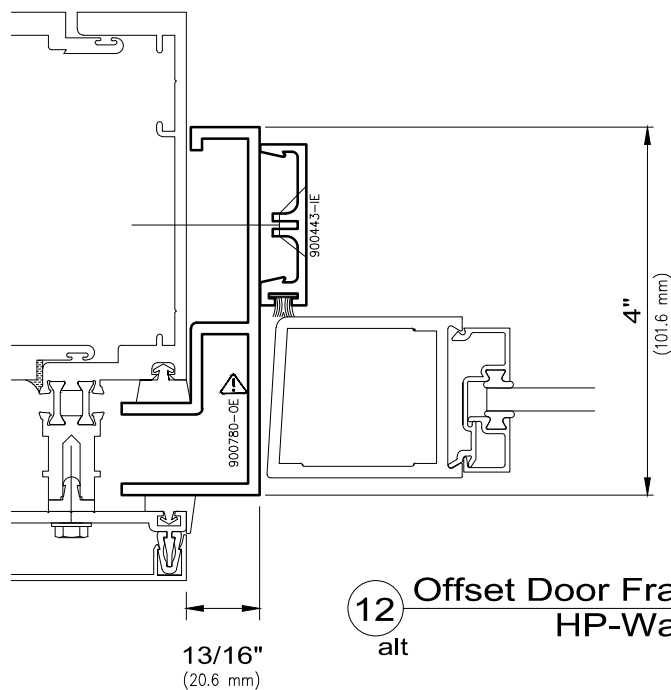
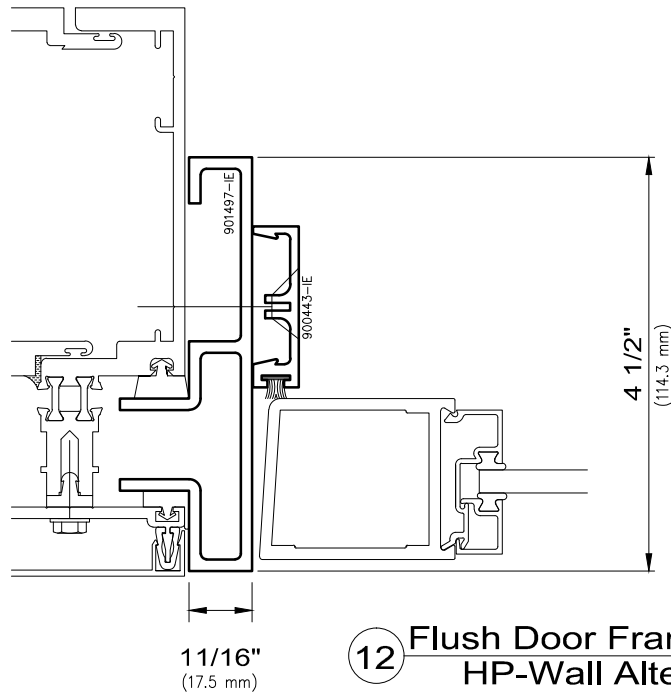
WINDOW AND WALL
SYSTEMS

Door Frame Inserts

Curtainwall

HP-WALL™ Series

Non-stocked items shown – Minimum order quantity may apply



⚠ - OBSOLETE TOOLING STATUS

SCALE: 6" = 1'-0"

C6-11

© 2018 Apogee Wausau Group, Inc.



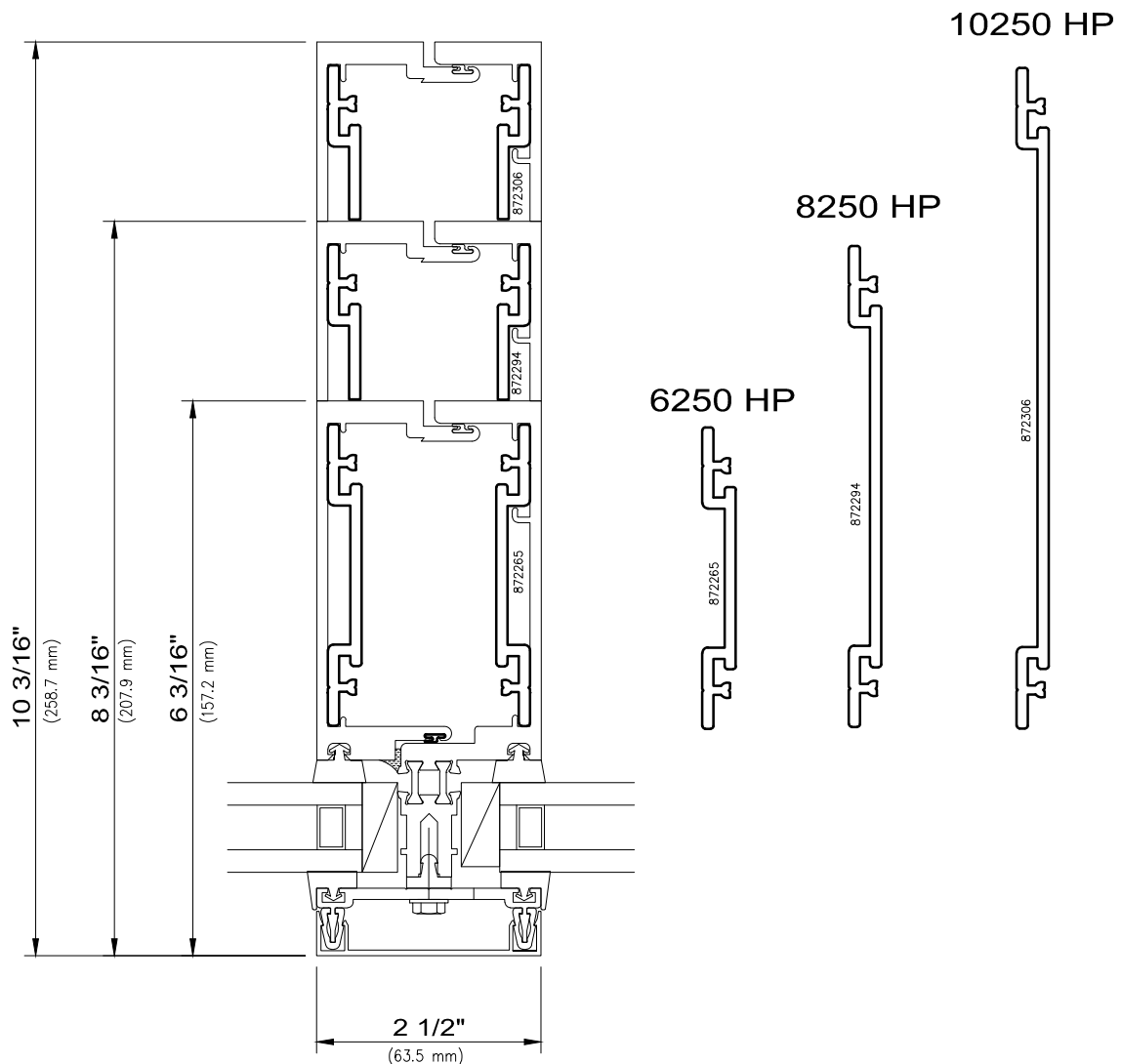
WAUSAU

WINDOW AND WALL
SYSTEMS

6250/ 8250/ 10250 Mullion Splices

Curtainwall

HP-WALL™ Series



13 HP Wall Mullion Splices



WAUSAU

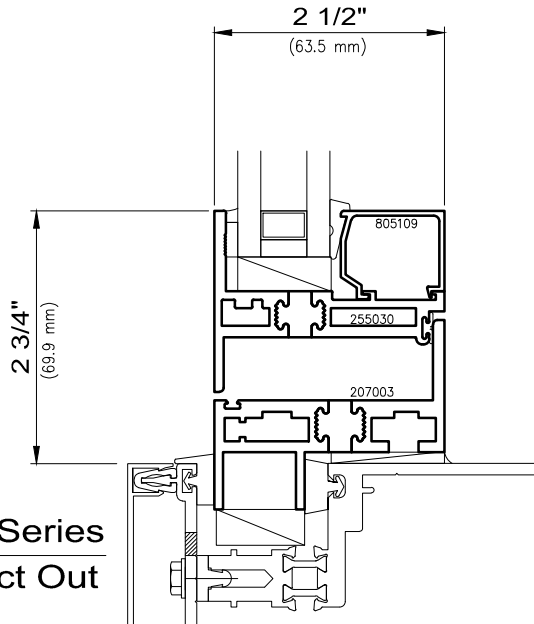
WINDOW AND WALL
SYSTEMS

Projected Vent Inserts

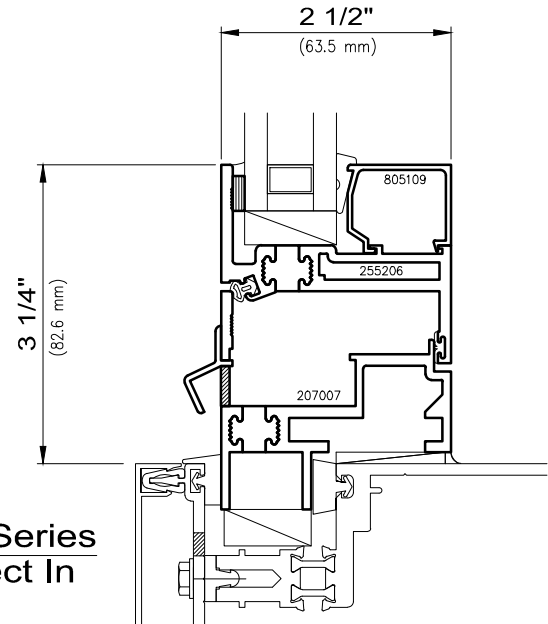
Curtainwall

HP-WALL™ Series

Non-stocked items shown – Minimum order quantity may apply

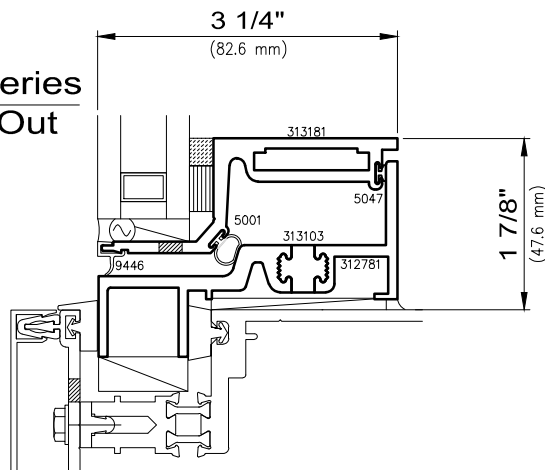


2250 Series
Project Out

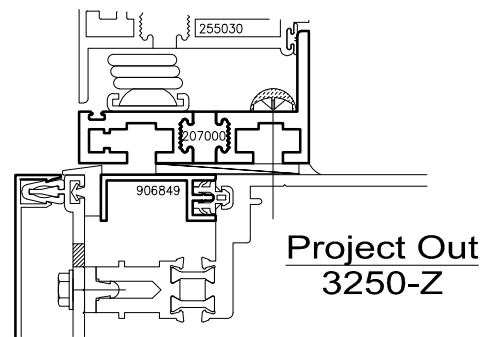


2250 Series
Project In

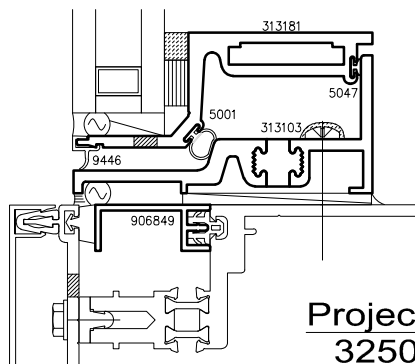
3250-Z Series
Project Out



"Flat Back" Options



Project Out
3250-Z



Project Out
3250-Z

For Other Available Inserts, Reference Zero Sightline Section.



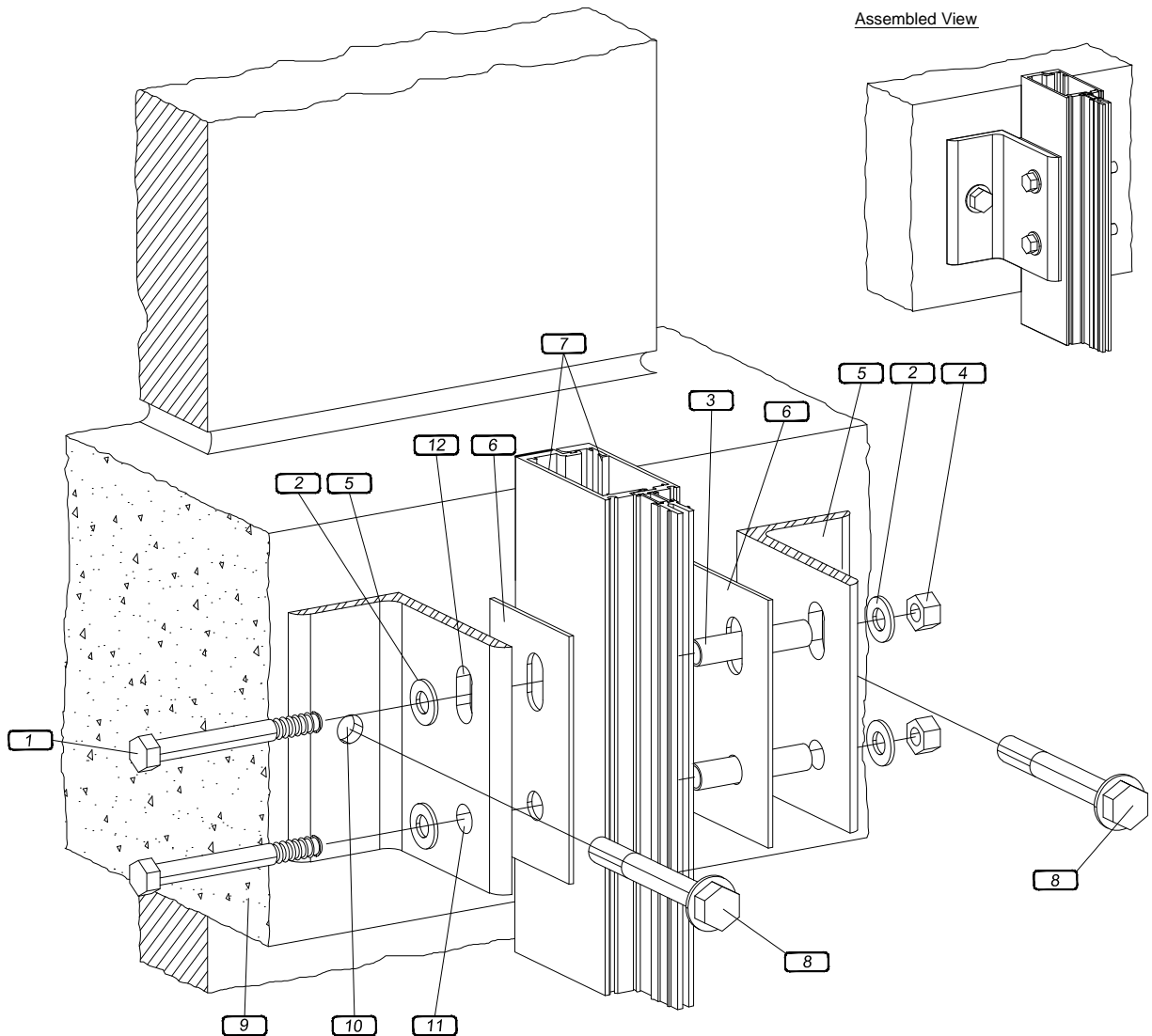
WAUSAU

WINDOW AND WALL
SYSTEMS

Installation, Typical Slab Anchor

Curtainwall

HP-WALL™ Series



Typical Connection

- 1 Bolt *
- 2 Washer
- 3 Pipe Spacer
- 4 Nut

- 5 Steel Angles *
- 6 1/8" PVC Plates, Size equals the bearing surface of the anchor.
- 7 Heavy Extruded Aluminum Frame Members
- 8 Expansion Anchor *
- 9 Concrete Floor Slab Typ.

* Note:
Steel angle, expansion anchor, and thru bolts vary due to wind loads, slab location, and floor height.

Typical Holes

- 10 Anchorage Hole, (Wausau supplies all holes in steel. Erector to match drill aluminum.)
- 11 Steel To Receive Slots At Live Load
- 12 Steel To Receive Clear Holes At Dead Load

Wausau is providing only those components of perimeter fire and/or smoke containment systems that are identified on drawings as, "by Wausau." Wausau takes no responsibility for other materials or conditions, or for obtaining necessary engineering judgements and/or approvals.



WAUSAU

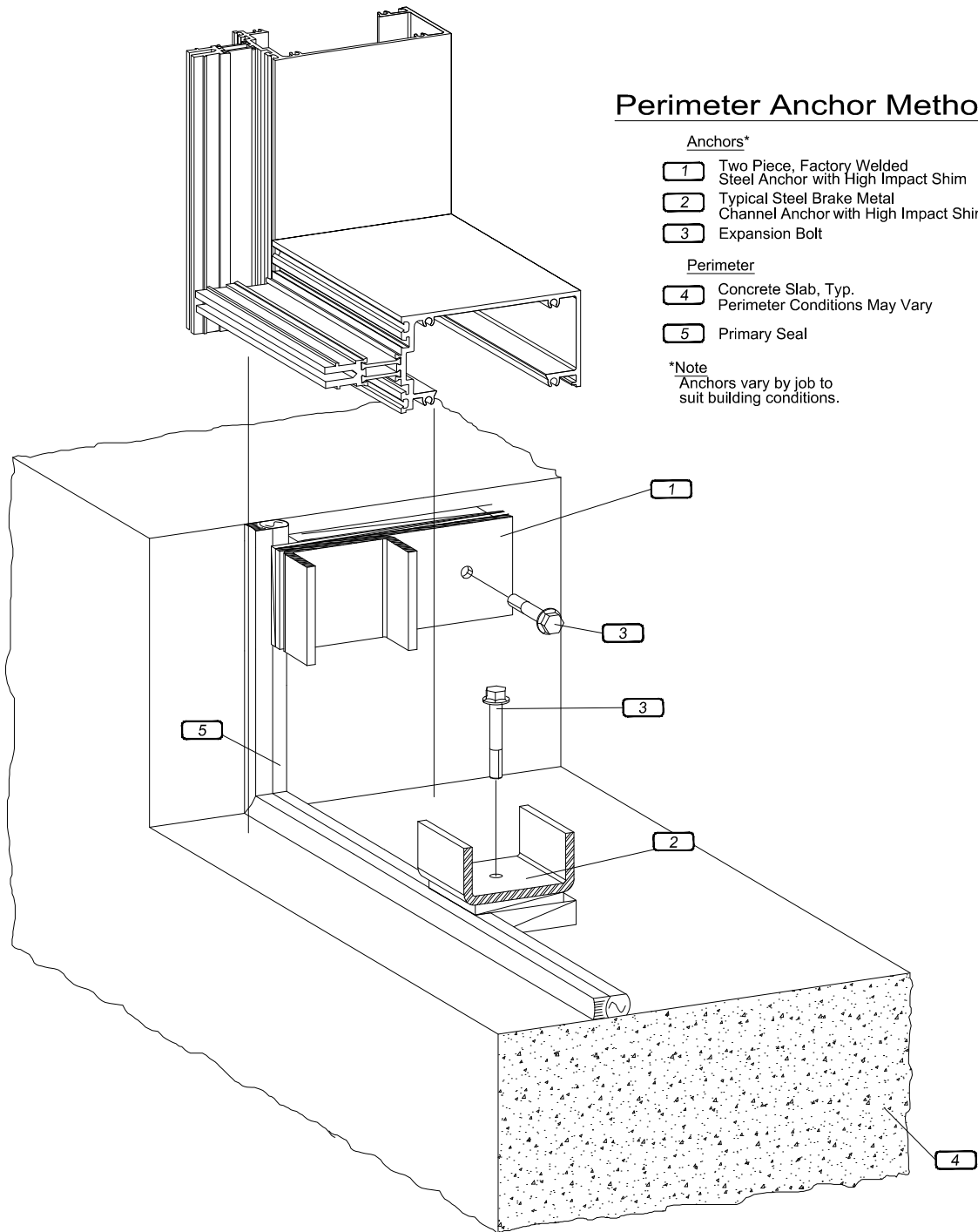
WINDOW AND WALL
SYSTEMS

Isometric Views

Curtainwall

HP-WALL™ Series

Shown with 6250 HP-Wall





WAUSAU

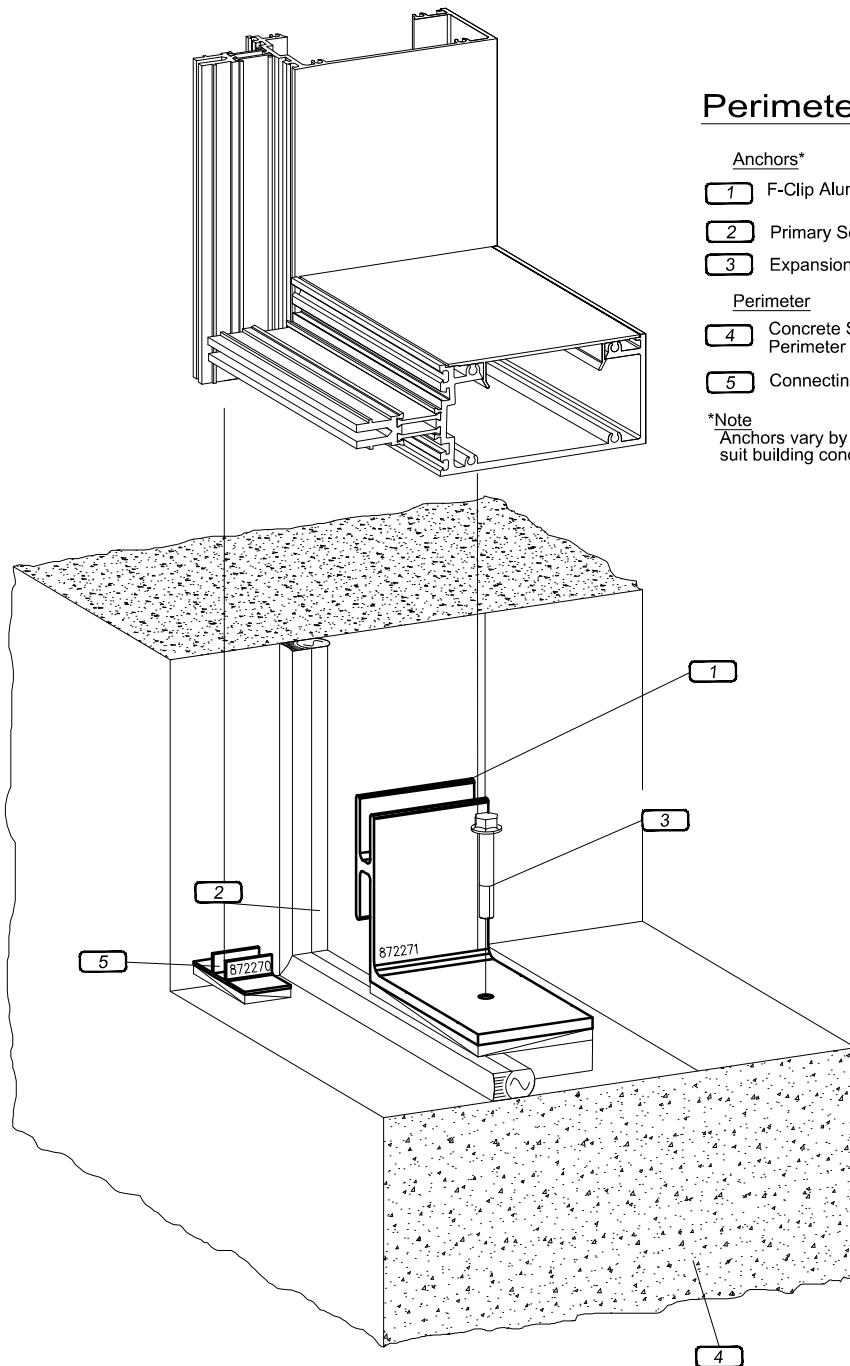
WINDOW AND WALL
SYSTEMS

Isometric Views

Curtainwall

HP-WALL™ Series

Shown with 6250 HP-Wall



Perimeter Anchor Method

Anchors*

- 1 F-Clip Aluminum Anchor with High Impact Shim
- 2 Primary Seal
- 3 Expansion Bolt

Perimeter

- 4 Concrete Slab, Typ.
Perimeter Conditions May Vary
- 5 Connecting Clip with High Impact Shim

*Note

Anchors vary by job to
suit building conditions.



WAUSAU

WINDOW AND WALL
SYSTEMS

Isometric Views

Curtainwall

HP-WALL™ Series

Shown with 6250 HP-Wall

Perimeter Anchor Method

