



**WAUSAU**

WINDOW AND WALL  
SYSTEMS

Curtainwall Elevation

Unitized Curtainwall

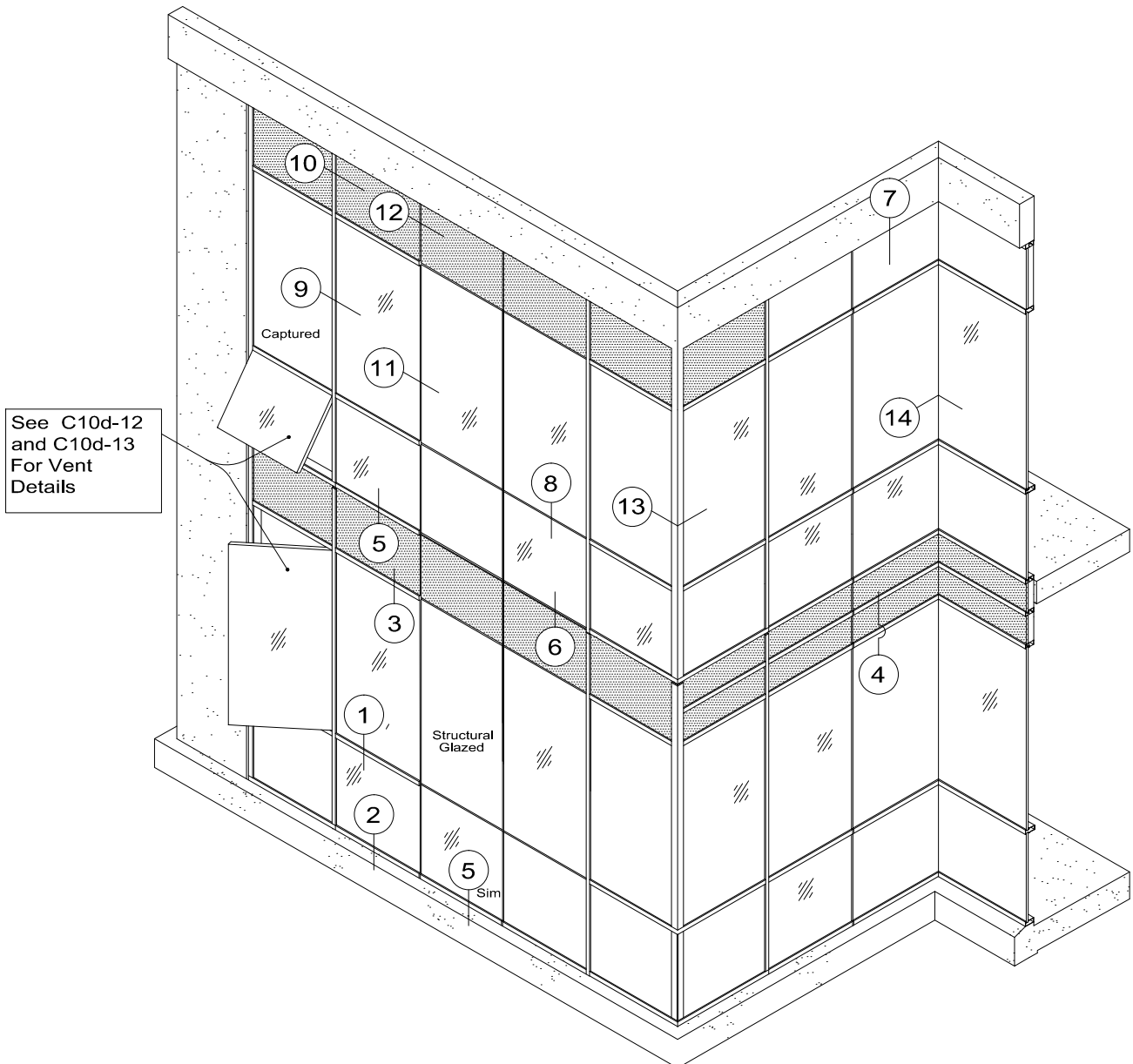
6250i and 7250i-HRX INvision™ Series

24.0mm Thermal Barrier

**Section Contents**

Page(s)

Details.....	C10d-2 thru C10d-9
Anchor Options.....	C10d-10 and C10d-11
Insert Vents .....	C10d-12 and C10d-13



# 6250i-HRX and 7250i-HRX INvision

24.0 mm Thermal Barrier



**WAUSAU**

WINDOW AND WALL  
SYSTEMS

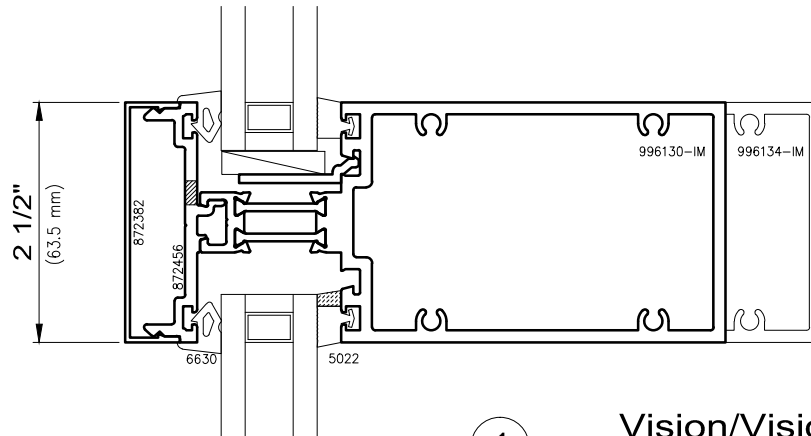
Unitized

## Unitized Curtainwall

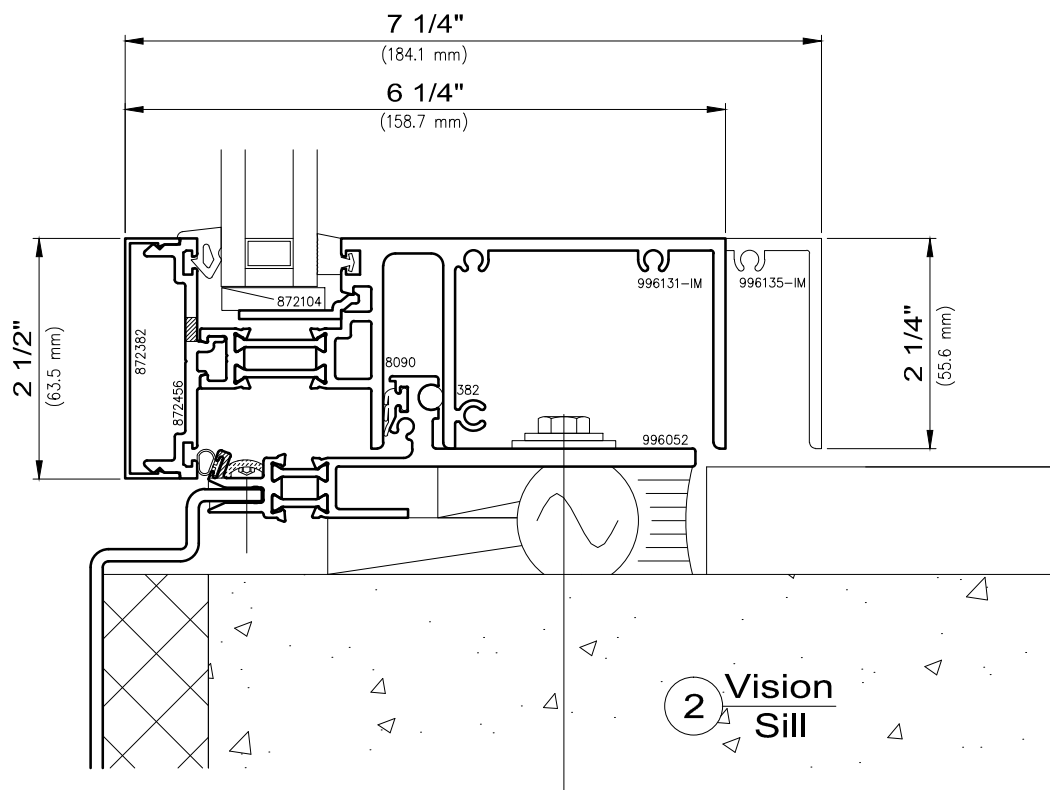
6250i and 7250i-HRX InVision™ Series

Non-stocked items shown – Minimum order quantity may apply

24.0mm Thermal Barrier



1 Vision/Vision  
Horizontal Intermediate



2 Vision  
Sill



**WAUSAU**

WINDOW AND WALL  
SYSTEMS

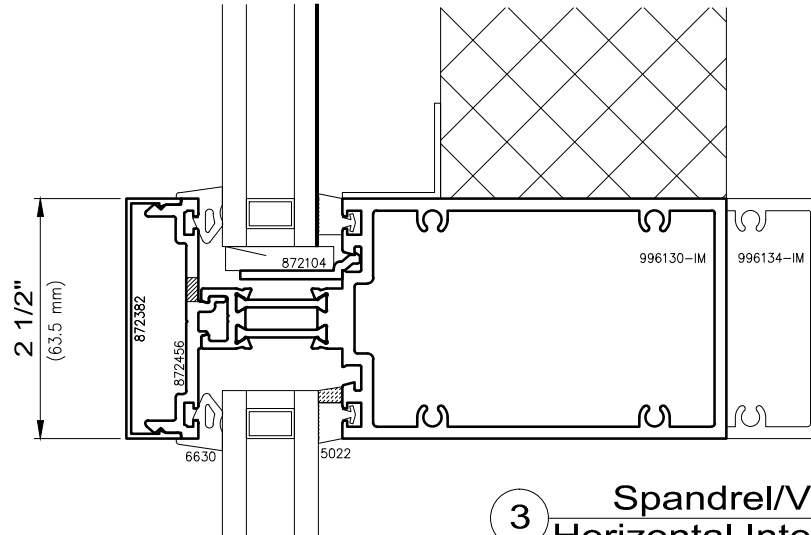
Unitized

## Unitized Curtainwall

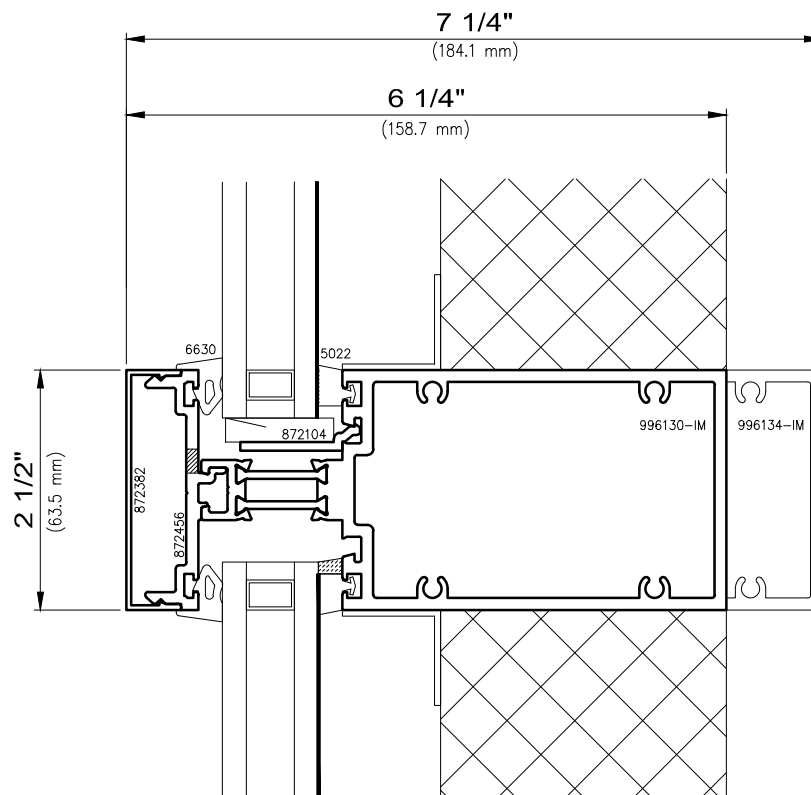
6250i and 7250i-HRX INvision™ Series

Non-stocked items shown – Minimum order quantity may apply

24.0mm Thermal Barrier



3 Spandrel/Vision  
Horizontal Intermediate



4 Spandrel/Spandrel  
Horizontal Intermediate



**WAUSAU**

WINDOW AND WALL  
SYSTEMS

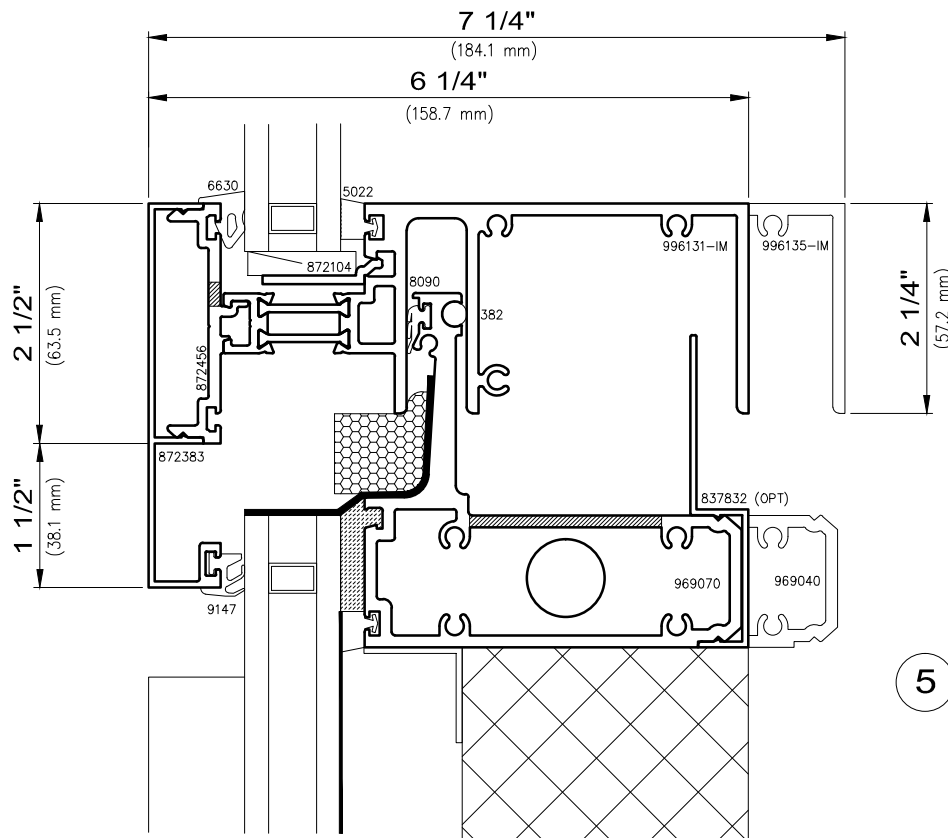
Unitized

## Unitized Curtainwall

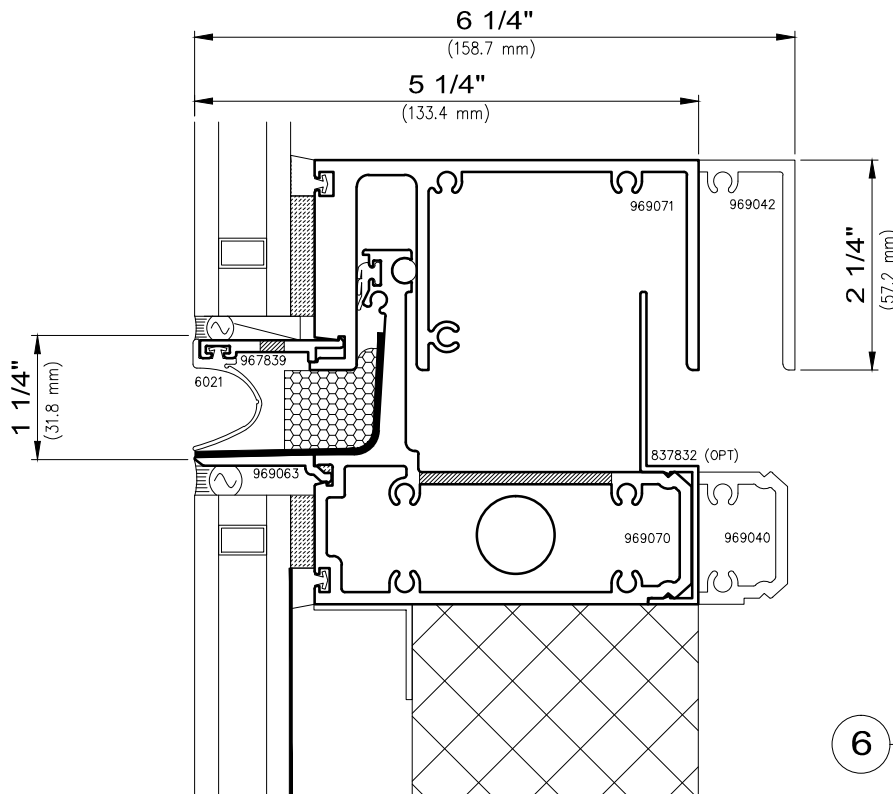
6250i and 7250i-HRX INvision™ Series

Non-stocked items shown – Minimum order quantity may apply

24.0mm Thermal Barrier



5 Vision/Spandrel  
Horizontal Stack



6 Vision/Spandrel  
Horizontal Stack



**WAUSAU**

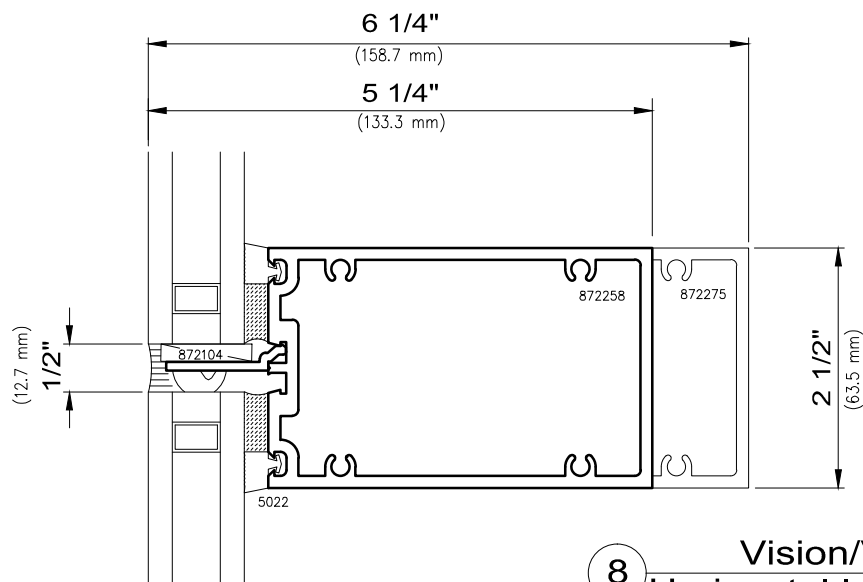
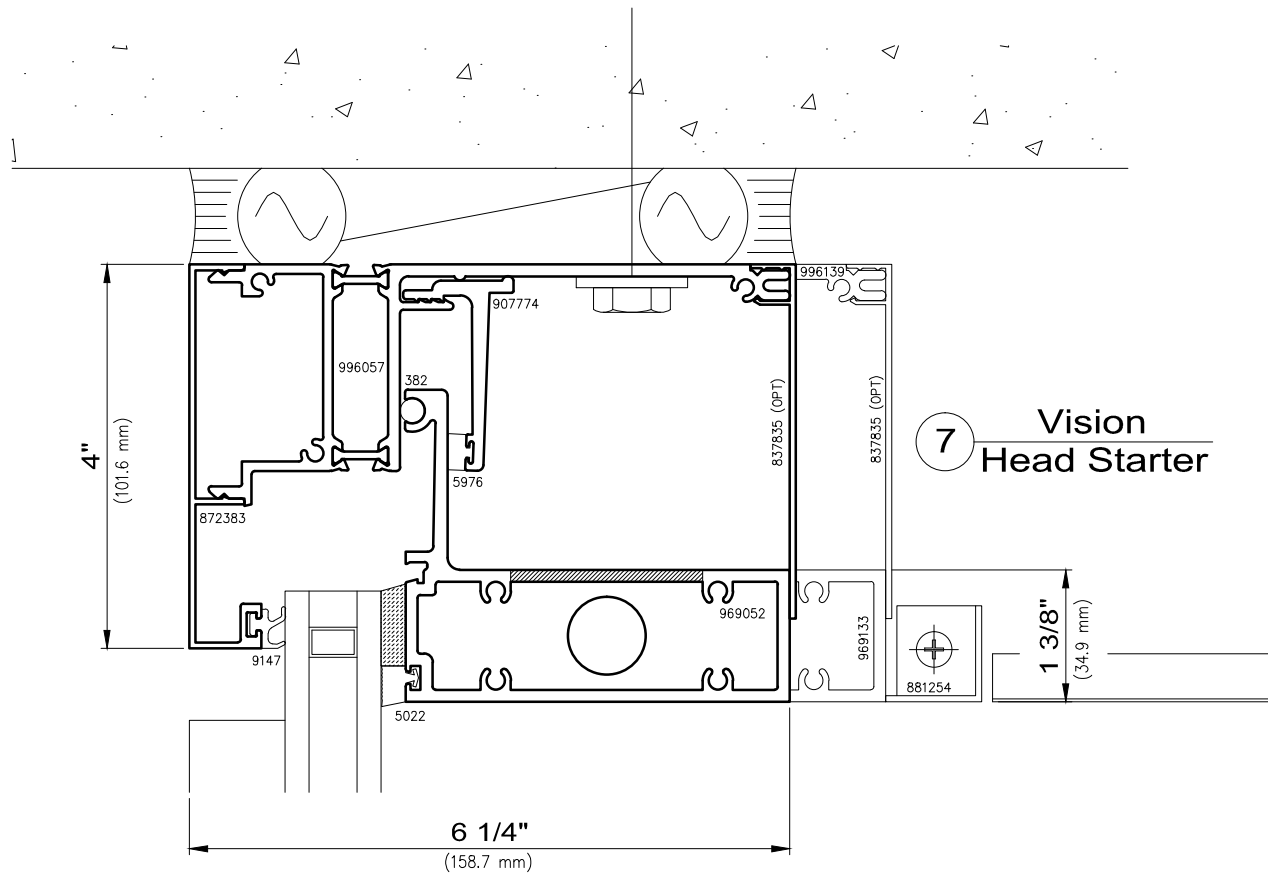
WINDOW AND WALL  
SYSTEMS

Unitized

Unitized Curtainwall

6250i and 7250i-HRX INvision™ Series

24.0mm Thermal Barrier



8 Vision/Vision  
Horizontal Intermediate



# WAUSAU

WINDOW AND WALL  
SYSTEMS

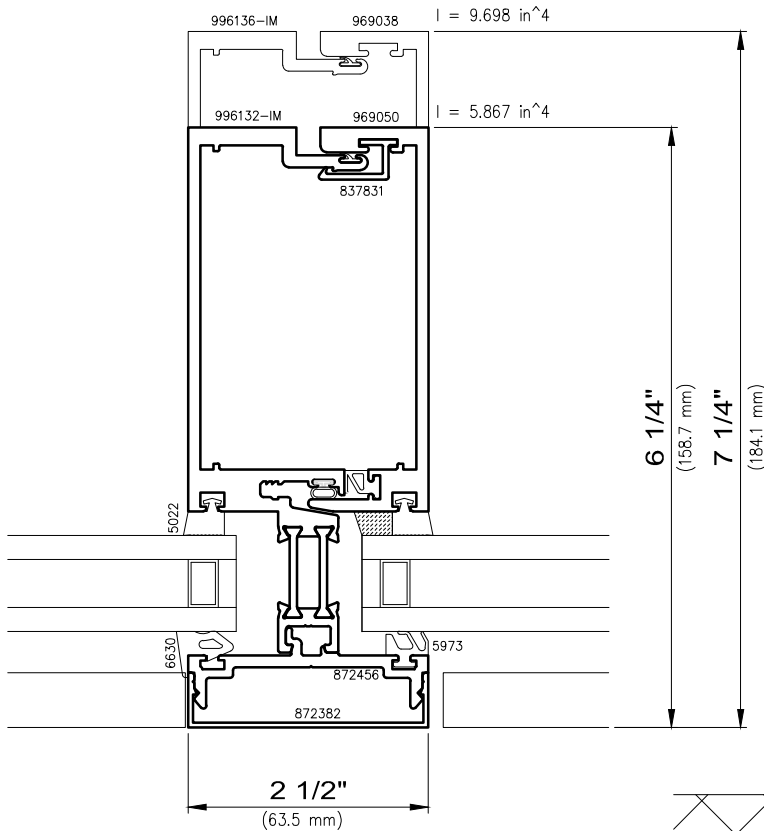
Unitized

## Unitized Curtainwall

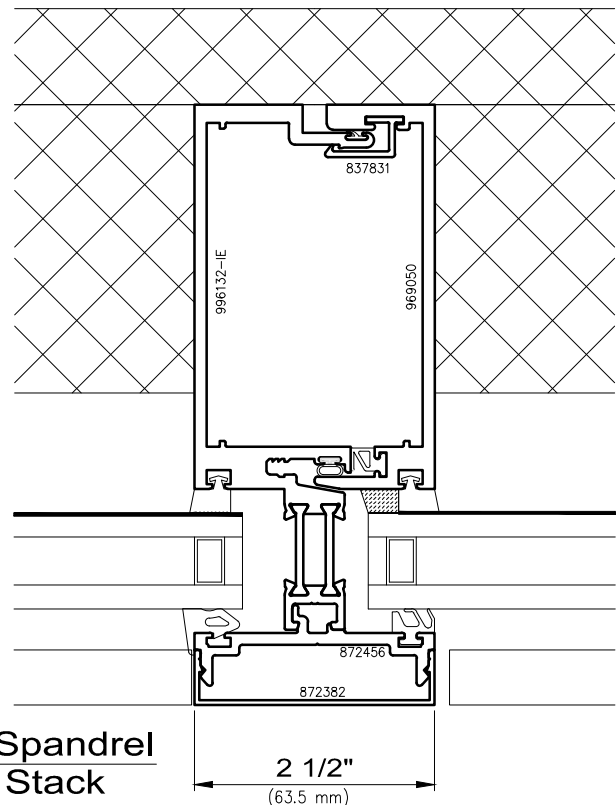
6250i and 7250i-HRX INvision™ Series

Non-stocked items shown – Minimum order quantity may apply

24.0mm Thermal Barrier



9 Vision/Vision  
Mullion Stack



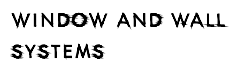
10 Spandrel/Spandrel  
Mullion Stack

I-values indicated are for frame members only.  
Thermal barrier shear reduction of 10% included.

SCALE: 6" = 1'-0"

C10d-6

© 2015 Apogee Wausau Group, Inc.



## 6250i and 7250i-HRX INvision™ Series

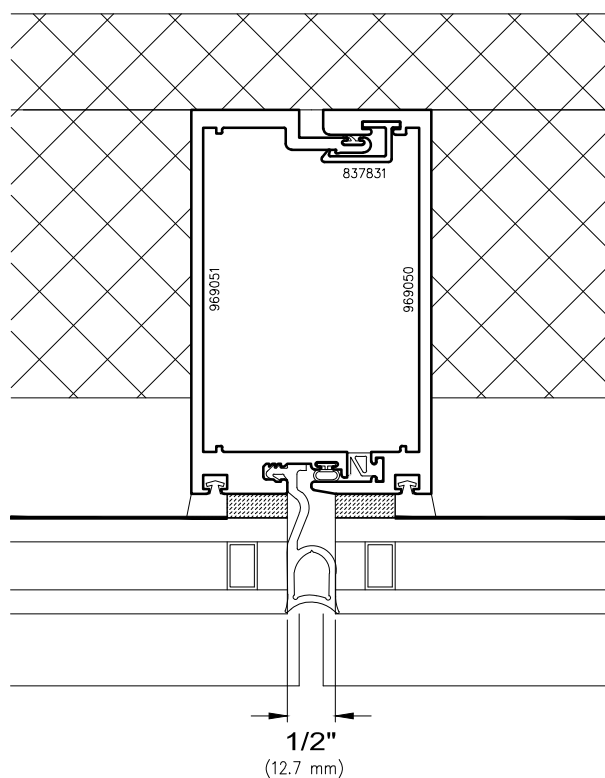
Technical drawing of a window frame cross-section. The drawing shows a multi-pane window assembly with various components labeled with part numbers: 969039, 969038, 969051, 969050, 837831, 5022, and 7884. Dimensions are provided in inches and millimeters:

- Top horizontal dimension:  $I = 8.596 \text{ in}^4$
- Right vertical dimension (total height):  $6 \frac{1}{4}"$  (158.7 mm)
- Right vertical dimension (inner height):  $5 \frac{1}{4}"$  (133.3 mm)
- Bottom horizontal dimension:  $\frac{1}{2}"$  (12.7 mm)

The drawing also includes a small detail of a window pane with a cross-hatch pattern and a small 'X' mark.

11 Vision/Vision  
Mullion Stack

12 Spandrel/Spandrel  
Mullion Stack



© 2015 Apogee Wausau Group, Inc.



**WAUSAU**

WINDOW AND WALL  
SYSTEMS

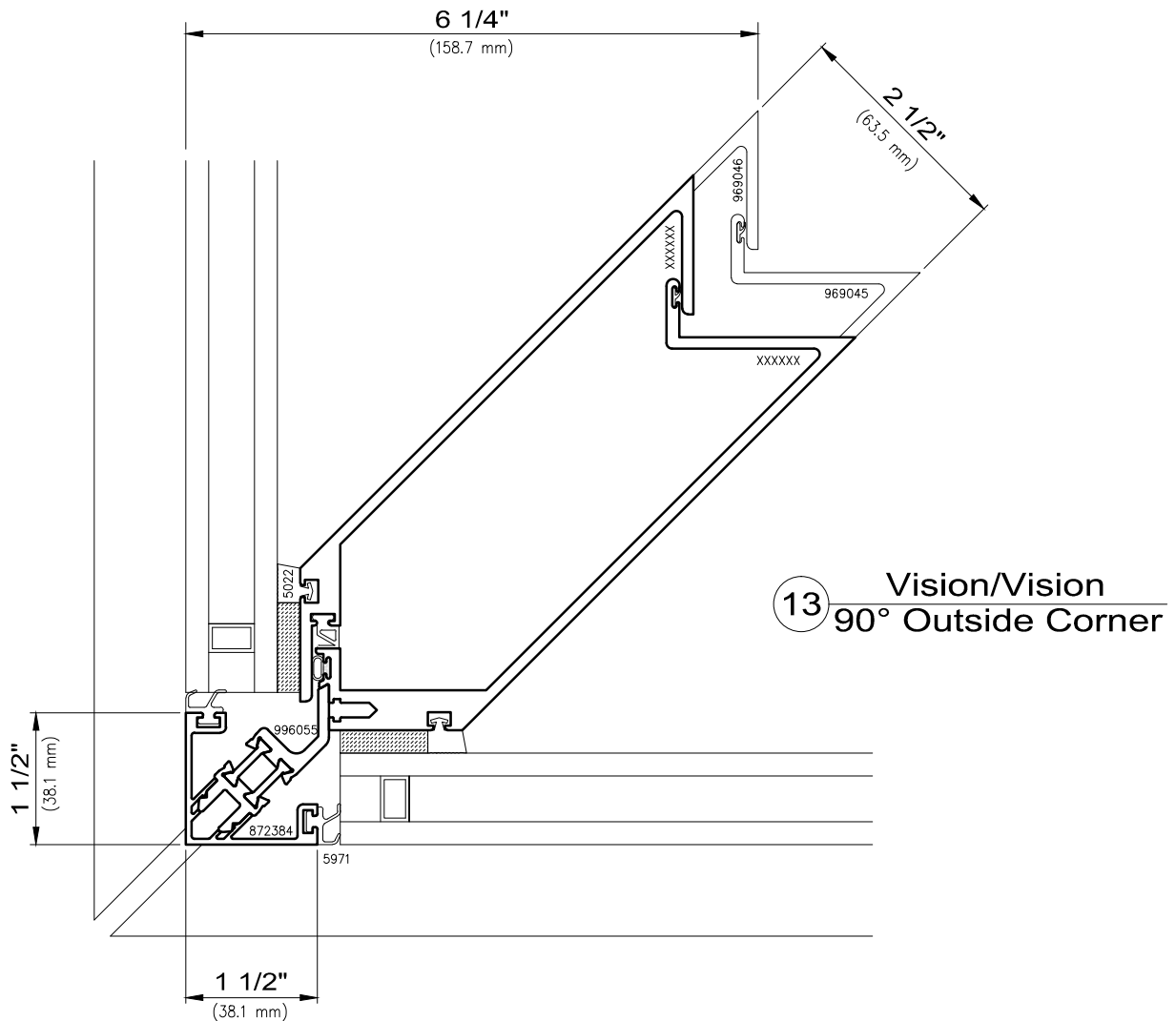
Unitized

## Unitized Curtainwall

6250i and 7250i-HRX INvision™ Series

Non-stocked items shown – Minimum order quantity may apply

24.0mm Thermal Barrier







**WAUSAU**

WINDOW AND WALL  
SYSTEMS

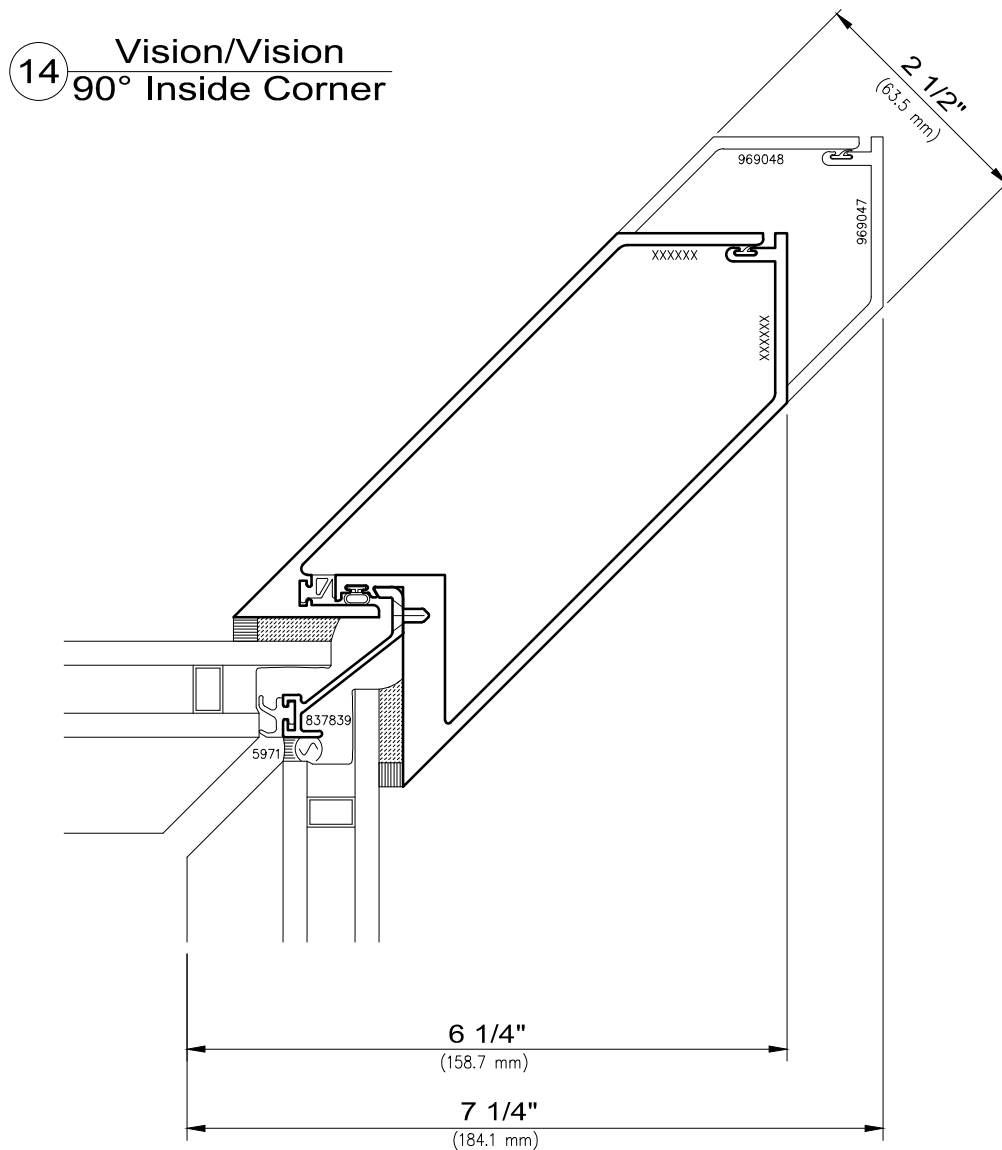
Unitized

## Unitized Curtainwall

6250i and 7250i-HRX INvision™ Series

Non-stocked items shown – Minimum order quantity may apply

24.0mm Thermal Barrier



SCALE: 6" = 1'-0"

C10d-9

© 2015 Apogee Wausau Group, Inc.



**WAUSAU**

WINDOW AND WALL  
SYSTEMS

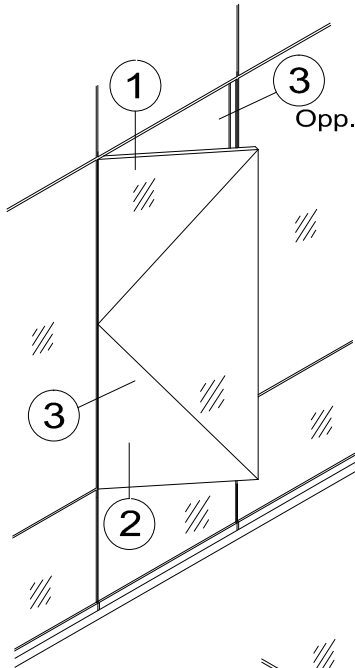
Anchorage

## Unitized Curtainwall

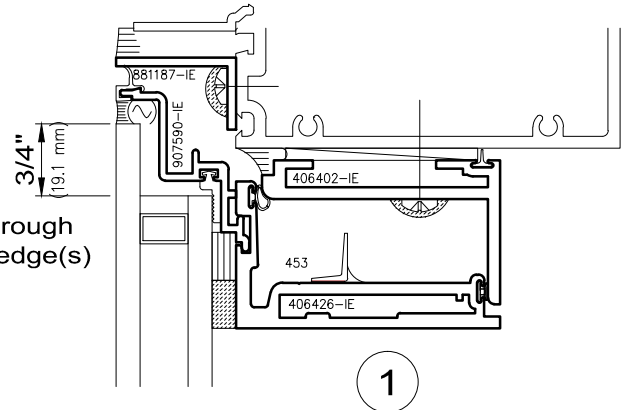
6250i and 7250i-HRX INvision™ Series

Non-stocked items shown – Minimum order quantity may apply

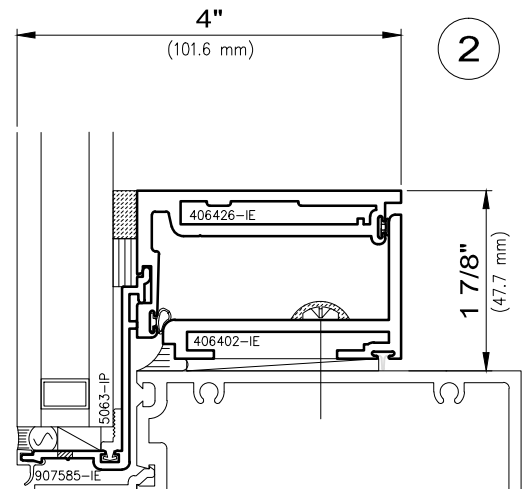
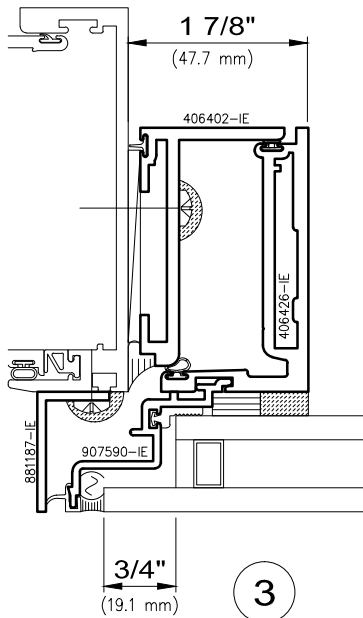
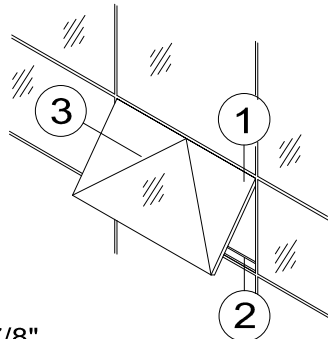
Shown with 6250i-HR framing



Note read-through  
at offset IGU edge(s)



Used at hinge side  
and where clearance is required



Offset IGU edge not  
recommended at sill



**WAUSAU**

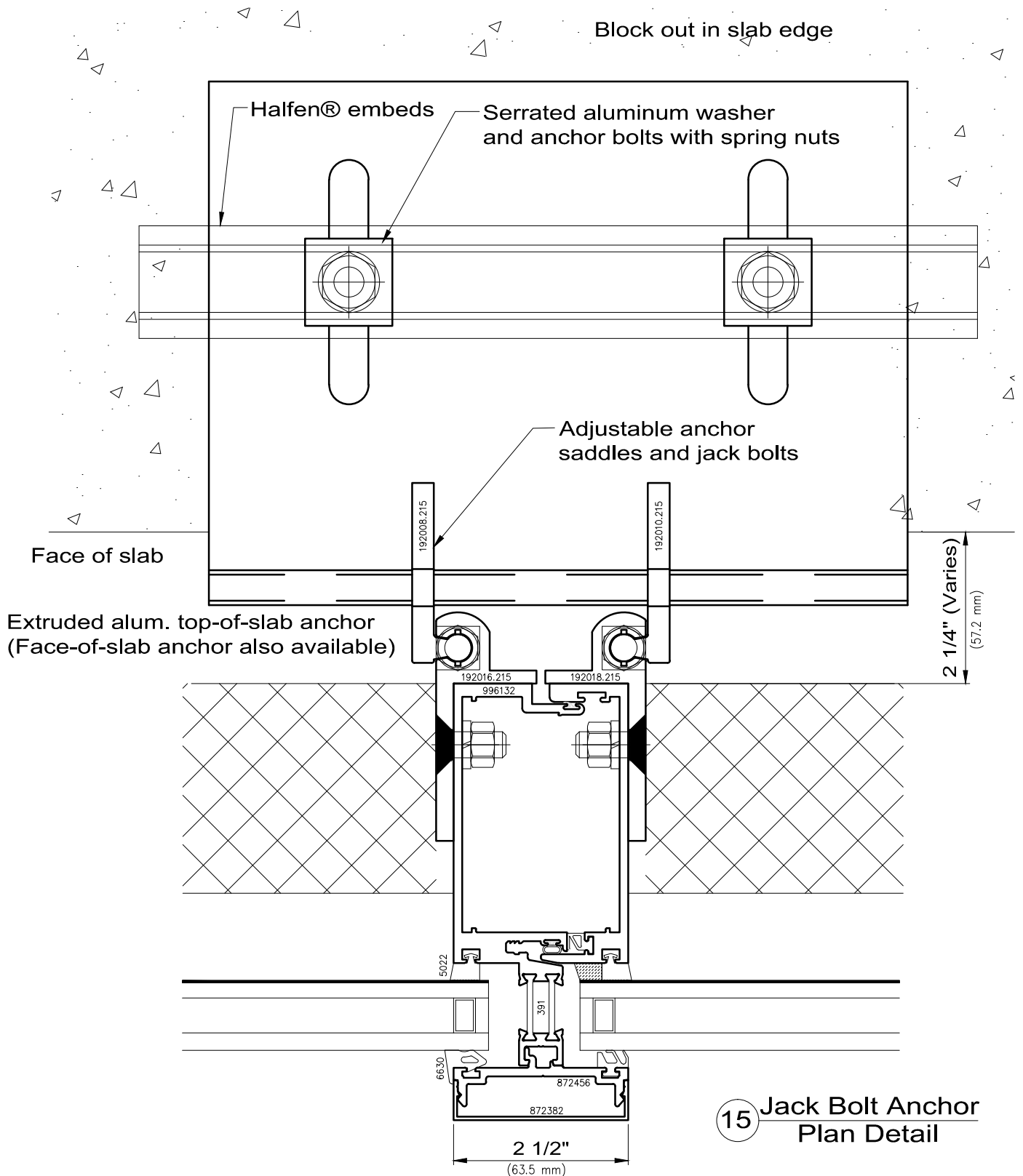
WINDOW AND WALL  
SYSTEMS

Anchorage

Unitized Curtainwall

6250i and 7250i-HRX Invision™ Series

14.7mm Thermal Barri





# WAUSAU

WINDOW AND WALL  
SYSTEMS

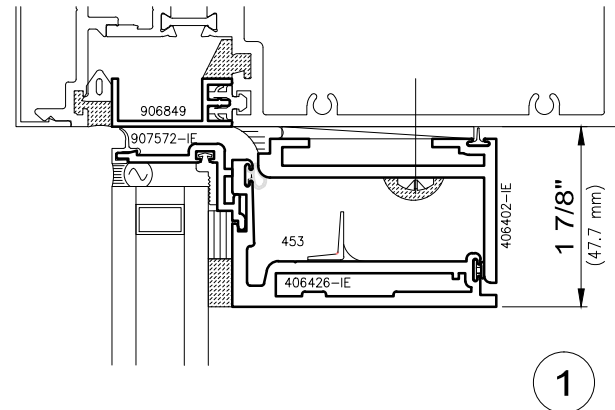
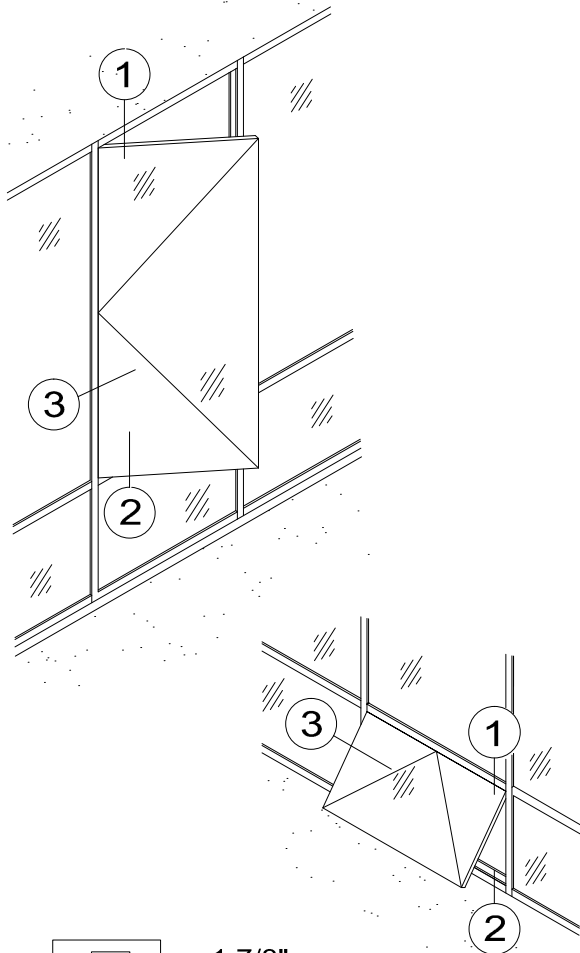
Insert Vents

## Unitized Curtainwall

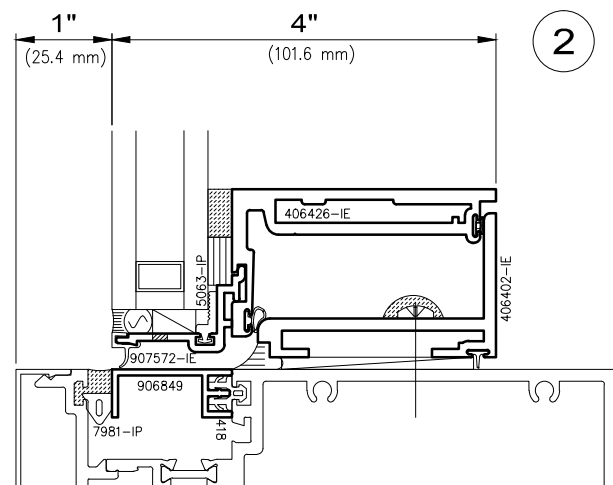
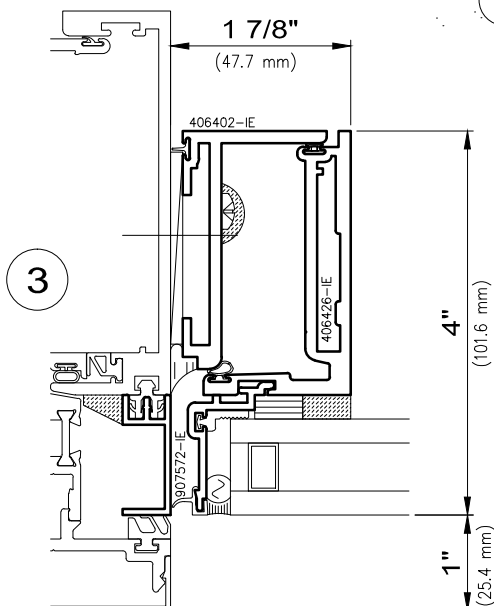
6250i and 7250i-HRX INvision™ Series

Non-stocked items shown – Minimum order quantity may apply

Shown with 6250i-HR framing



Vent and frame die profiles  
vary depending on hardware selection





**WAUSAU**

WINDOW AND WALL  
SYSTEMS

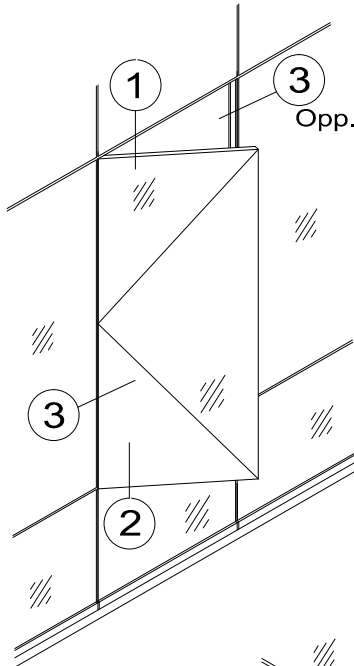
SSG Insert Vents

## Unitized Curtainwall

6250i and 7250i-HRX INvision™ Series

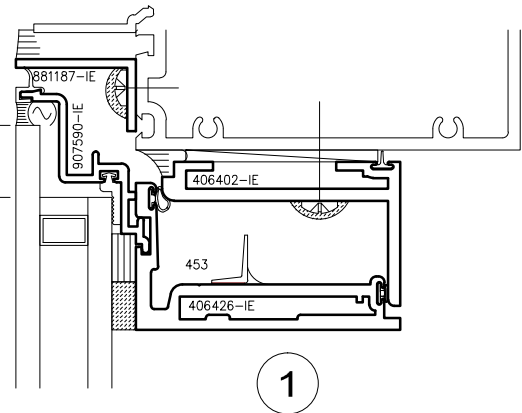
Non-stocked items shown – Minimum order quantity may apply

Shown with 6250i-HR framing

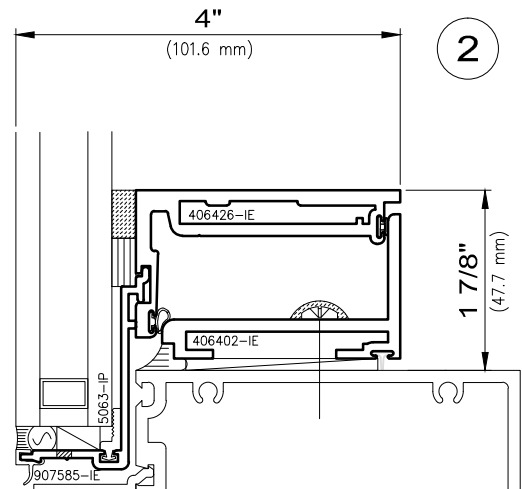
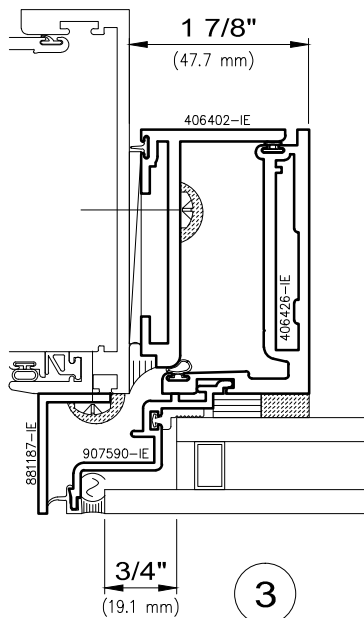
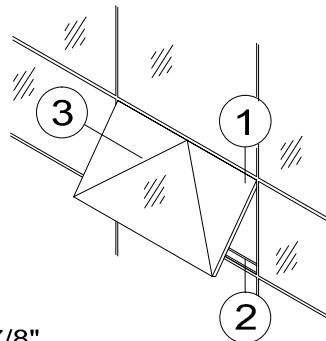


Note read-through  
at offset IGU edge(s)

3/4"  
(19.1 mm)



Used at hinge side  
and where clearance is required



Offset IGU edge not  
recommended at sill