



**WAUSAU**

WINDOW AND WALL  
SYSTEMS

Test Unit Elevations

## Architectural Windows

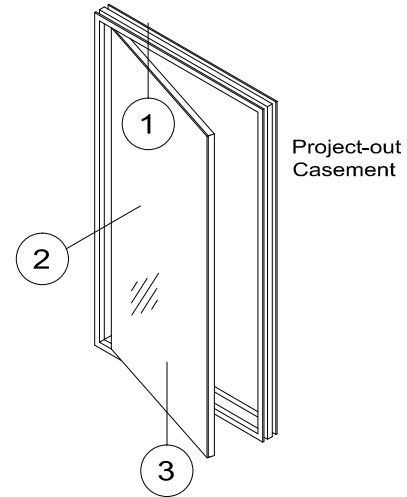
## 4250-Z Series Zero Sightline

Elevations Viewed From The Exterior

### Section Contents

Page(s)

Insert Vent Details	Z3-2 thru Z3-4
SSG Insert Vent Details	Z3-5 thru Z3-7



### AAMA Test Configurations (shown)

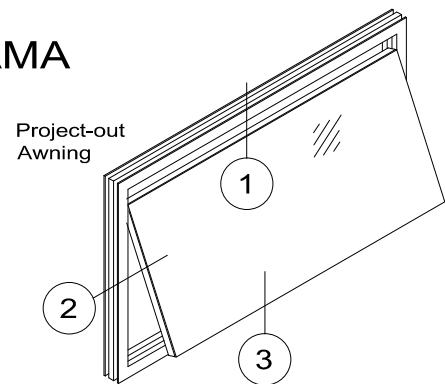
#### Architectural AW Class

For air, water, cycling and structural

#### Gateway Sizes

60" x 36"	Projected 1524 mm x 914 mm
36" x 60"	Casement 914 mm x 1524 mm

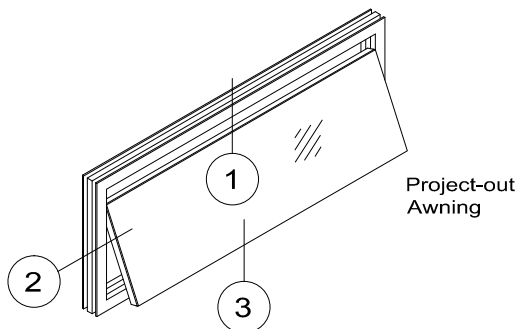
### AAMA



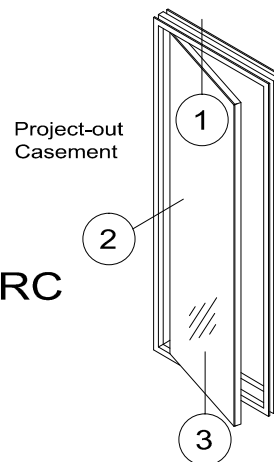
### NFRC 100 Thermal Test Configurations (shown)

For U-Factor, SHGC and CR

Projected Frame Size	59" x 24"	1500 mm x 600 mm
Casement Frame Size	24" x 59"	600 mm x 1500 mm



### NFRC



# 4250-Z Zero Sightline

Contact A Wausau Representative For Other Possible Configurations



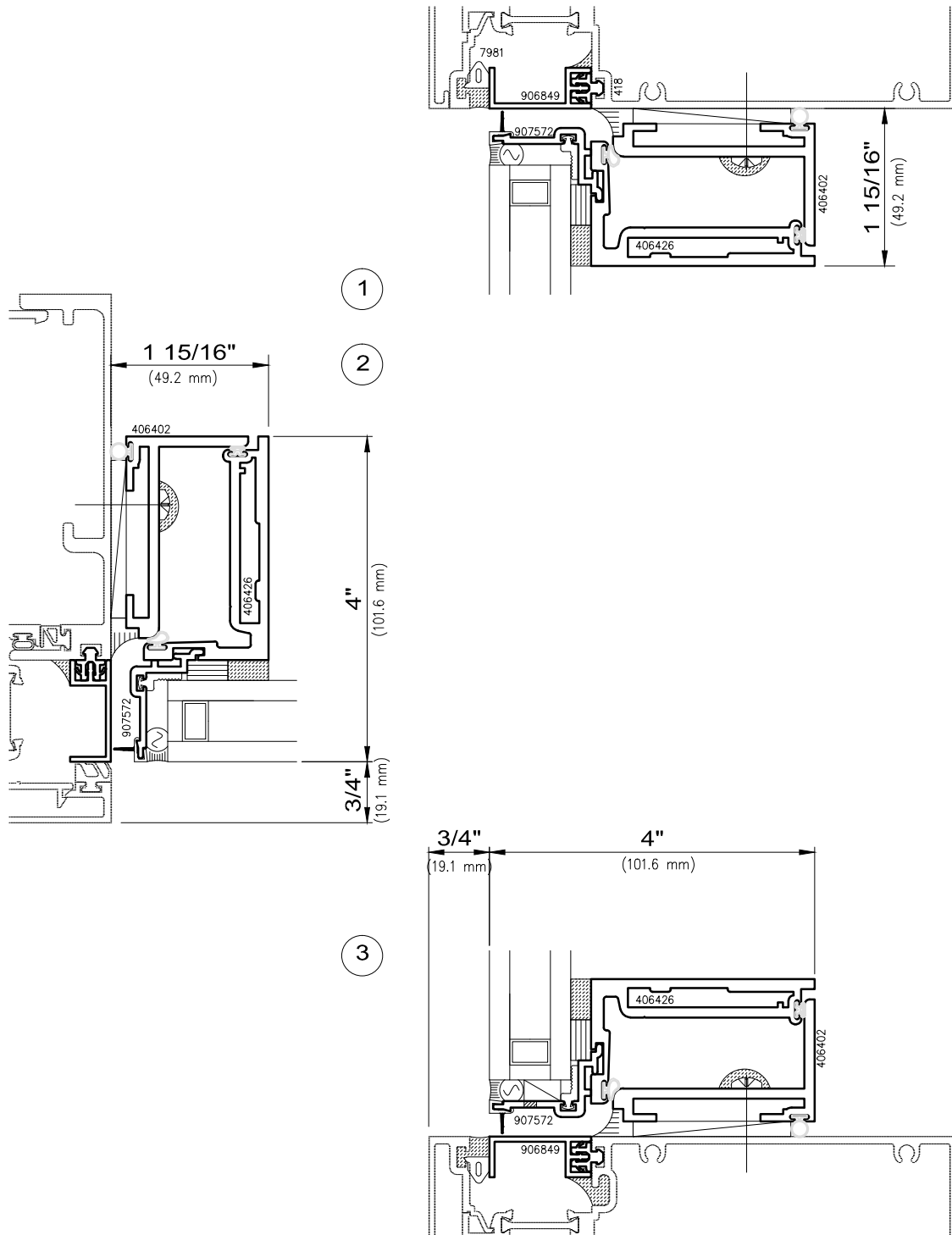
**WAUSAU**

WINDOW AND WALL  
SYSTEMS

Insert Vents  
Conventional Hardware

Architectural Windows

4250-Z Series Zero Sightline



Read-through of glazing components may be evident from the exterior using certain glass types.



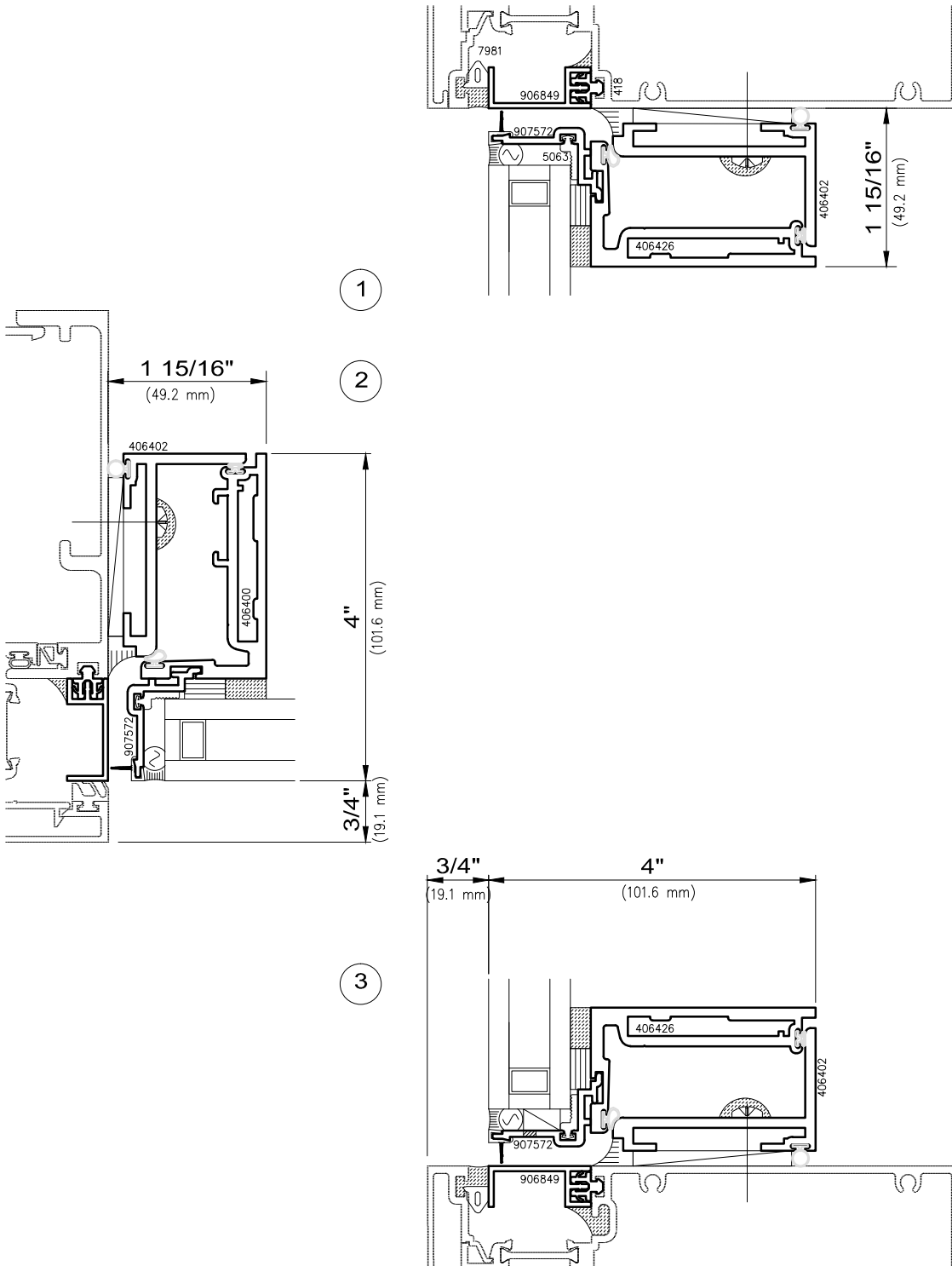
**WAUSAU**

WINDOW AND WALL  
SYSTEMS

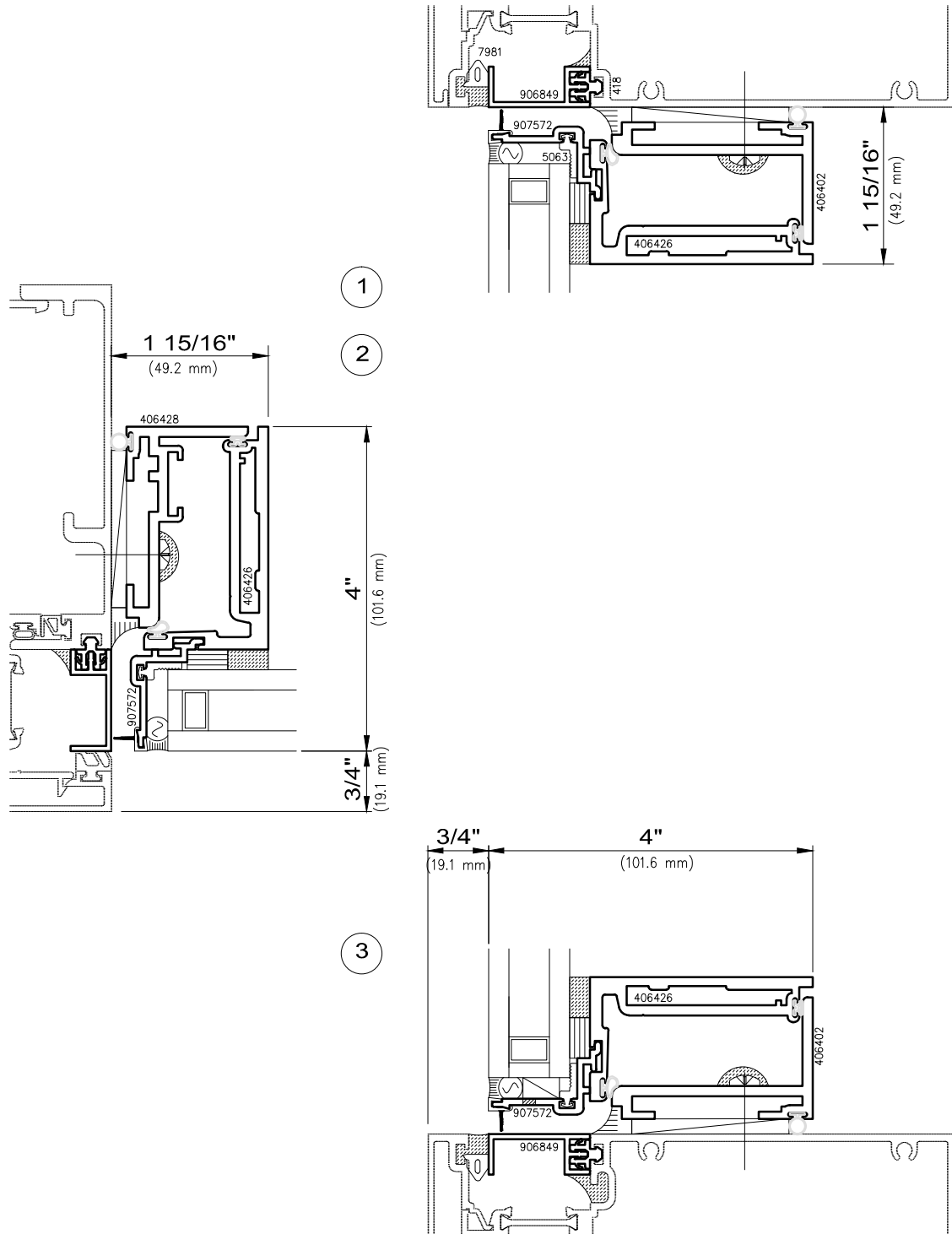
Insert Vents  
Multi-lock Sash Hardware

Architectural Windows

4250-Z Series Zero Sightline



Read-through of glazing components may be evident from the exterior using certain glass types.



Read-through of glazing components may be evident from the exterior using certain glass types.



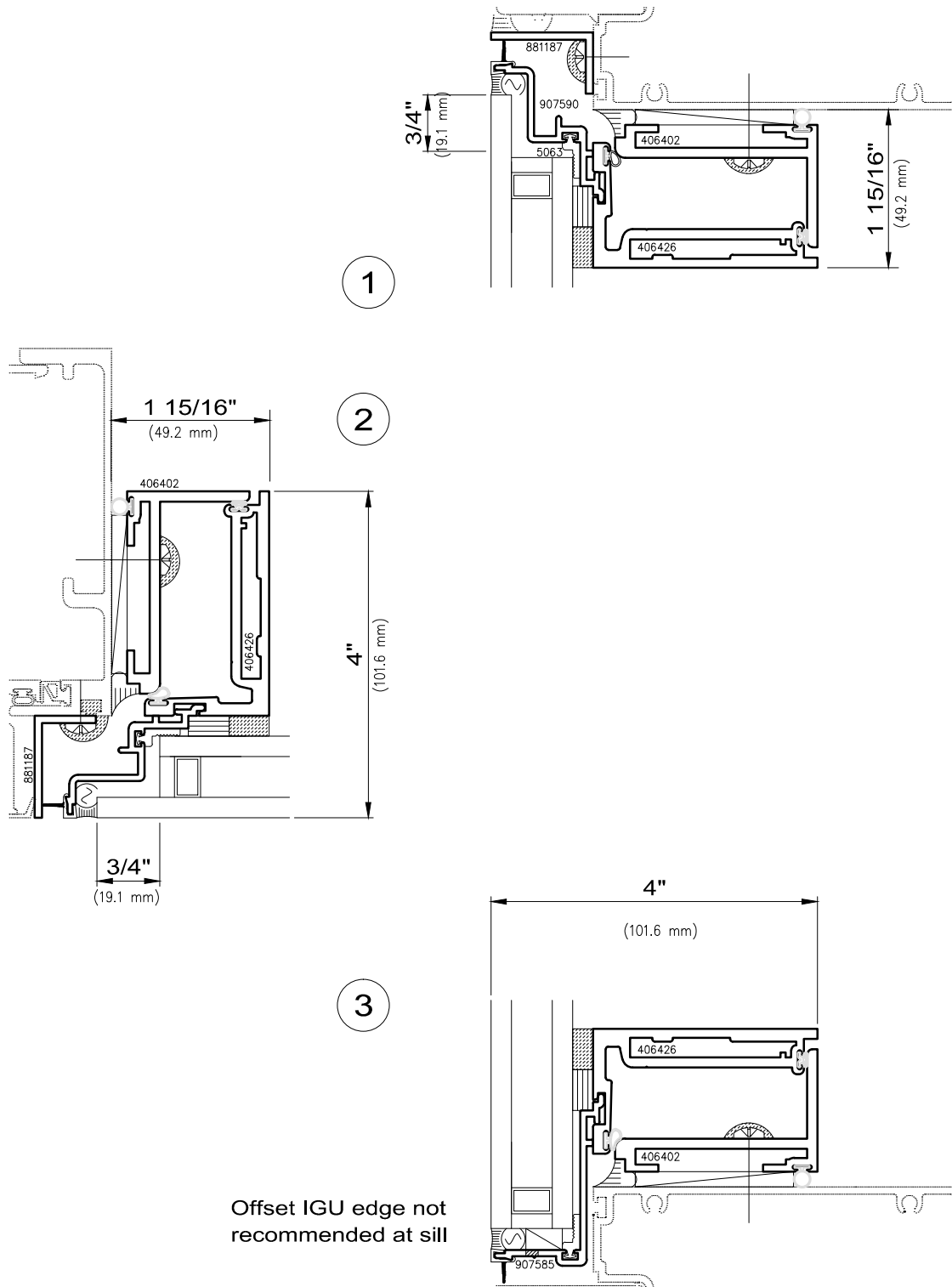
**WAUSAU**

WINDOW AND WALL  
SYSTEMS

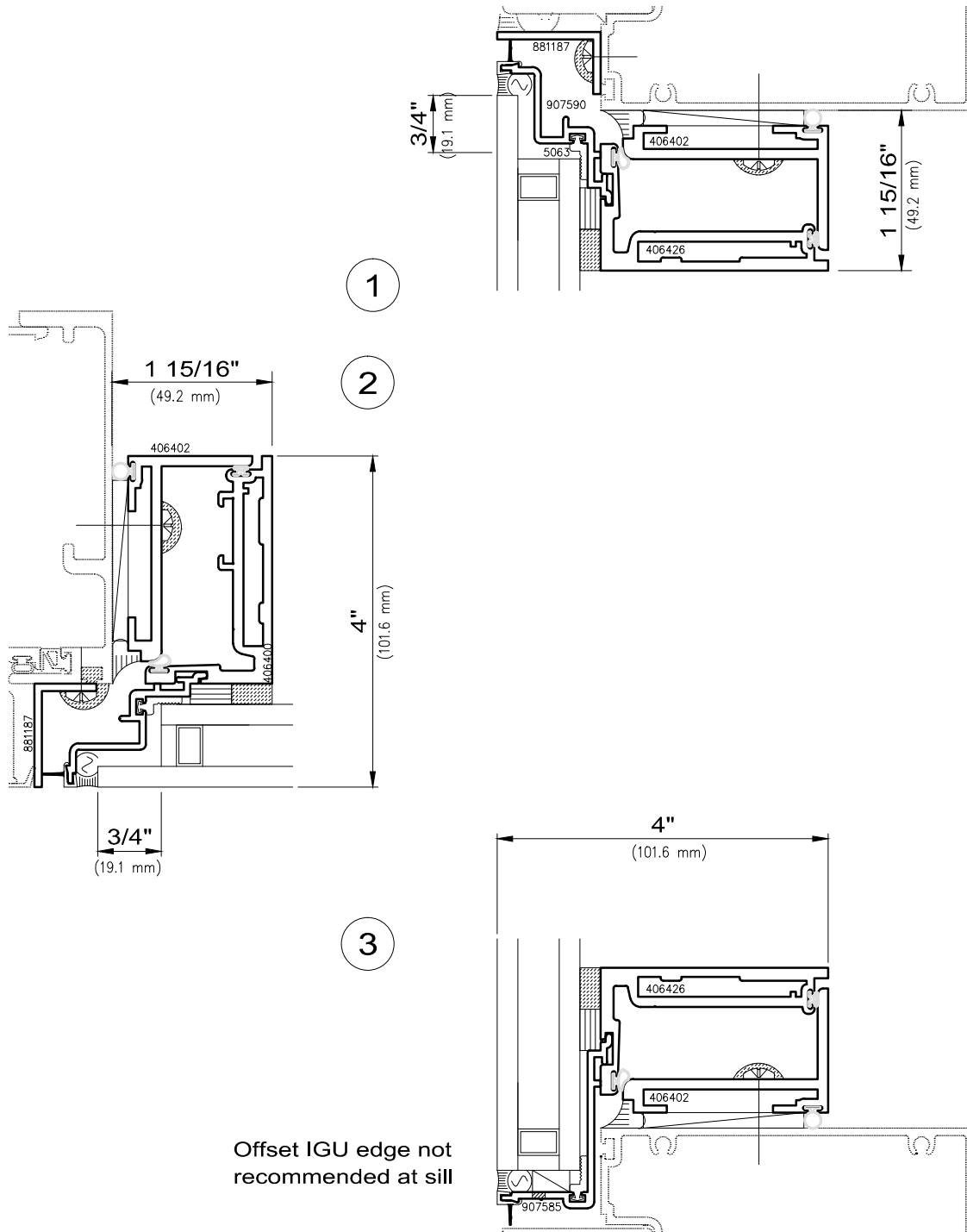
SSG Insert Vents  
Conventional Hardware

Architectural Windows

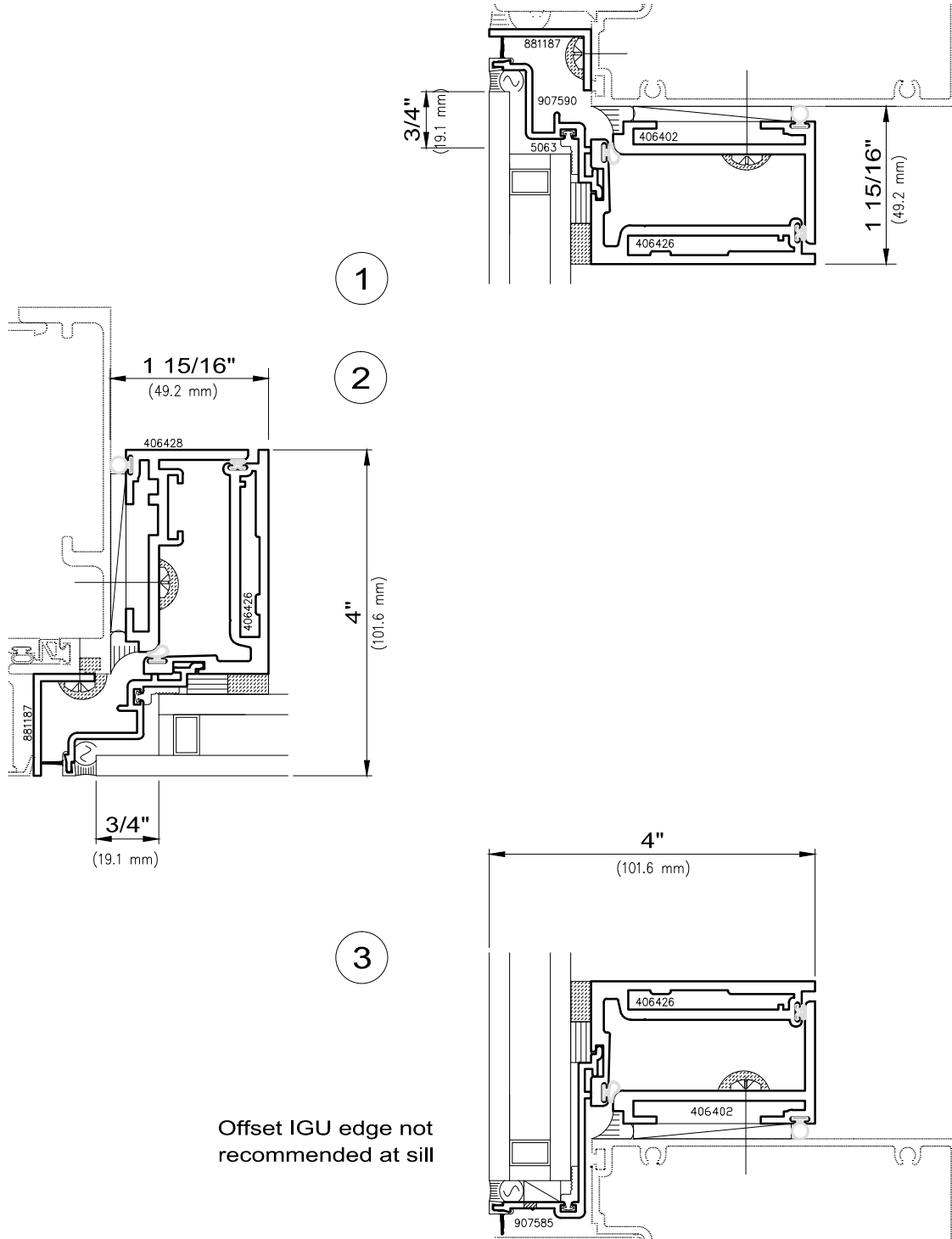
4250-Z Series Zero Sightline



Read-through of glazing components may be evident from the exterior using certain glass types.



Read-through of glazing components may be evident from the exterior using certain glass types.



Read-through of glazing components may be evident from the exterior using certain glass types.