

4000i-DT PSYCHIATRIC WINDOWS



Veterans Administration Building 39
Battle Creek, Michigan

Wausau Window and Wall Systems®

4000i-DT Series Psychiatric windows help ensure security by resisting up to 2000 ft-lbs of interior impact. 4000i-DT updates a time-tested design to today's **energy-efficiency and condensation-resistance** standards, supporting a home-like and safe, therapeutic environment.



WAUSAU

WINDOW AND WALL
SYSTEMS

Features

- 4" frame depth with polyamide thermal barrier
- AAMA AW-120 Architectural Performance Class
- Resists interior, human impacts up to 2000 ft-lbs of energy
- Fixed; side-hinged, in-swing casement; top-hinged, in-swing; or hopper vent
- 15 psf static and cyclical water resistance
- Low U-Factors allow broad expanses of vision glass to meet Model Energy Codes
- Equal sightline at vents and fixed lites
- 1/8" principal wall thickness
- No vent joinery exposed to the exterior
- Integral between-glass blinds with 5/8" or 1" aluminum slats
- Concealed, extruded aluminum, butt hinges with stainless steel pins
- Tamper-resistant locking hardware and interior glazing materials
- Recycled aluminum framing



4000i-DT Psychiatric



WAUSAU

WINDOW AND WALL
SYSTEMS

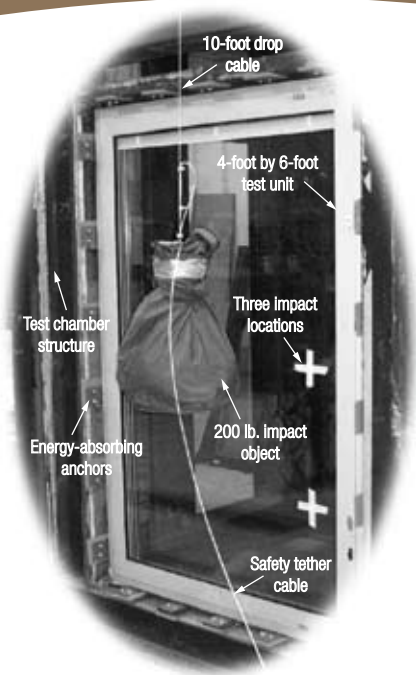
From initial design and in-depth engineering to finishing, manufacturing, testing, and delivery, Wausau Window and Wall Systems' capabilities help keep projects on schedule and on budget.

Our highly skilled project managers can coordinate all phases of your project, including submission approval, material allocation, production and delivery schedules, and are always just a phone call away.

Production line sampling, including inspection and water testing prior to shipment, ensures real-world performance equal to the lab.

Allowable Air	Water	NFRC U-Factor	CRF _{frame}	STC
0.10 cfm/sqft at 6.24 psf	15 psf	0.34 to 0.39 BTU/hr.sqft.°F	57 to 60	40 to 44 (est.)

Project-specific test results may vary

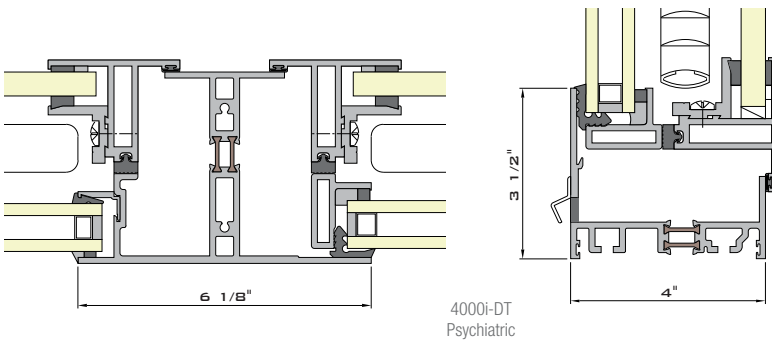


Human Impact
"Drop Test"
Apparatus

2000 foot-pounds of energy, as imparted by the human impact drop test apparatus, simulates shoulder impact of a 200 pound person moving at 25 feet per second.

Wausau psychiatric windows have been the basis of design for construction and renovation projects in sixteen states and the District of Columbia.

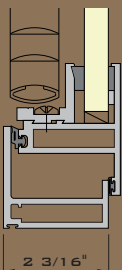
Important Design Team Note: Appropriate minimum requirements for interior human impact performance depend on application, occupancy, and level of supervision, as well as other project-specific parameters. Consultation with on-site medical and security staff is encouraged, with special consideration given to pass/fail criteria. Simulation of physical attack with objects likely to be accessible to occupants also may be advisable.



4000i-DT
Psychiatric

Options

- Triple glazing standard, dual glazing optional
- Interior glazing is 1/2" polycarbonate, 7/16" tempered laminated glass, or 9/16" glass-clad polycarbonate
- Non-impact rated standard interior access doors
- Dual-color frame finishes
- Exterior applied muntins
- Concealed through-frame anchorage or hook-in steel anchors
- Panning systems for renovation
- Head, jamb and sill receptors
- Safety keys non-removable in the unlocked position



2187-DT S.E.A.L.
Psychiatric

2187-DT Psychiatric SEAL

When existing windows are weather-tight, and ventilation is unnecessary, SEAL interior prime windows can improve Sound, Energy, Air and Light control, economically, and with a minimum of occupant disruption.

Drop-tested 2187-DT SEAL Series accepts psychiatric glazing, and is ideal for adaptive re-use.

SEAL Series often is used as a curtainwall or storefront add-on, for integral blinds or enhanced performance.





WAUSAU

WINDOW AND WALL
SYSTEMS

Patients, doctors and medical staff agree that views and daylighting help reduce hospital stays, increase patients' sense of well-being, and expedite the healing process

Operable windows provide emergency ventilation in patient rooms, and all Wausau products help support **LEED® for Health Care** sustainability goals



Wausau Window and Wall Systems
7800 International Drive Wausau, WI 54401
Toll Free 1 877 678 2983 Fax 1 715 843 4350
E-Mail healthcare@wausauwindow.com