



WAUSAU

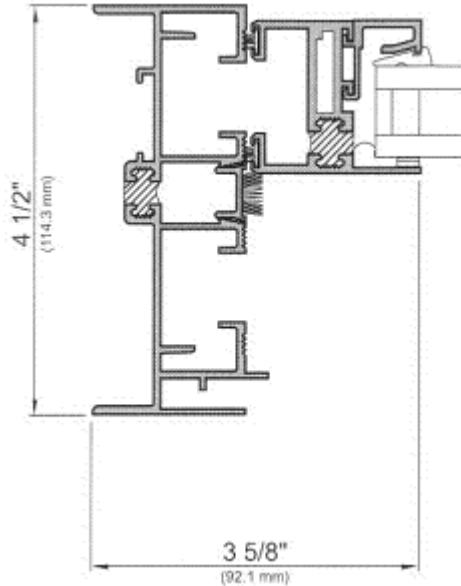
WINDOW AND WALL
SYSTEMS

TECHNICAL GUIDE

DOUBLE HUNG and FIXED

Architectural Windows

3150-DHT Tilt Sash Series



Features

- ✓ 4½” frame depth with polyurethane thermal barrier
- ✓ Up to AAMA AW70 Performance Class
- ✓ Flush screen frame
- ✓ Sturdy corner-blocked and crimped sash construction
- ✓ Extruded aluminum or slide-in steel anchors
- ✓ Meeting rail latches
- ✓ Accepts 1” insulating glass; bead glazed
- ✓ Beveled sash option
- ✓ Block and tackle or Ultralift® balances
- ✓ Dual glazed option with hinged or lift-out access panels
- ✓ 5/8” between-glass Venetian blinds available
- ✓ Head, sill and jamb receptors available
- ✓ Broad selection of renovation panning
- ✓ Offered through Advantage by Wausau
- ✓ High recycled content aluminum framing

Performance

Allowable Air
0.30 cfm/sqft at 6.24 psf
Water
12 psf
NFRC U-Factor
0.46 to 0.63 BTU/hr.sqft.°F (est.)
CRF_i
53 (est.)
STC
33 to 38 (est.)



DISCLAIMER: Wausau Window and Wall Systems takes no responsibility for product selection or application, including, but not limited to, compliance with building codes, safety codes, laws, merchantability or fitness for a particular purpose; and further disclaims all liability for the use, in whole or in part, of this Technical Guide in preparation of project specifications and/or other documents. Technical Guides are subject to change at any time, without notice, and at Wausau's sole discretion. ©2014 Apogee Wausau Group, Inc.