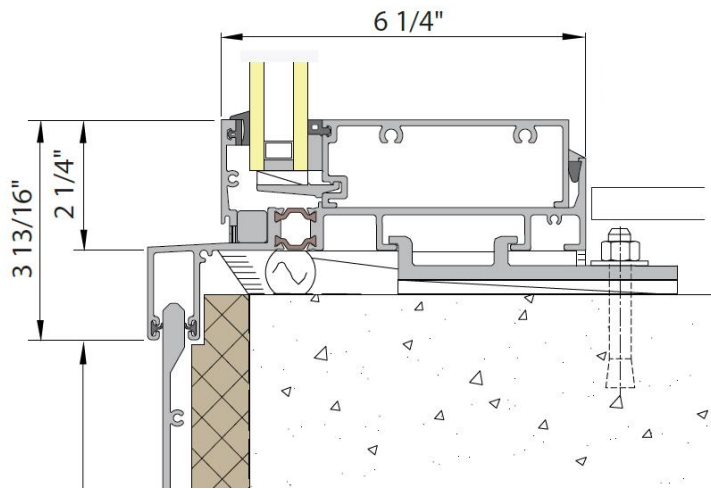


## Window Wall

## 5500i-SG INvision™ Thermal Unitized



### Features

- ✓ 5-1/2" frame depth; 18 mm polyamide thermal barrier
- ✓ 2-1/4" structural silicone-glazed (SSG) mullions and intermediate horizontal framing members
- ✓ Easy-to-install captured head and sill "can" receptors - Flush SSG sill and jamb receptors are available
- ✓ No exterior unit wet sealing required; pressure-equalized, rain screen design
- ✓ Less than 0.06 cfm/sqft air infiltration at 6.24 psf
- ✓ 15 psf water test pressure; static and dynamic
- ✓ Full AAMA 501 test protocol including inter-story vertical and horizontal movement; thermal cycling
- ✓ Low U-Factors allow broad expanses of vision glass to meet Model Energy Codes
- ✓ Glazing and sealing in a controlled factory environment
- ✓ Zero sight line multi-lock vent inserts and integrated terrace doors
- ✓ Exterior sun shades and interior light shelves available
- ✓ High recycled content extruded aluminum framing

### Performance

<b>Allowable Air</b>
0.06 cfm/sqft at 6.24 psf
<b>Water</b>
15 psf
<b>NFRC U-Factor</b>
0.32 to 0.56 BTU/hr.sqft.°F
<b>CRF<sub>f</sub></b>
81 to 82
<b>STC</b>
33 to 36 OITC 28 to 31



DISCLAIMER: Wausau Window and Wall Systems takes no responsibility for product selection or application, including, but not limited to, compliance with building codes, safety codes, laws, merchantability or fitness for a particular purpose; and further disclaims all liability for the use, in whole or in part, of this Technical Guide in preparation of project specifications and/or other documents. Technical Guides are subject to change at any time, without notice, and at Wausau's sole discretion. ©2022 Apogee Wausau Group, Inc.