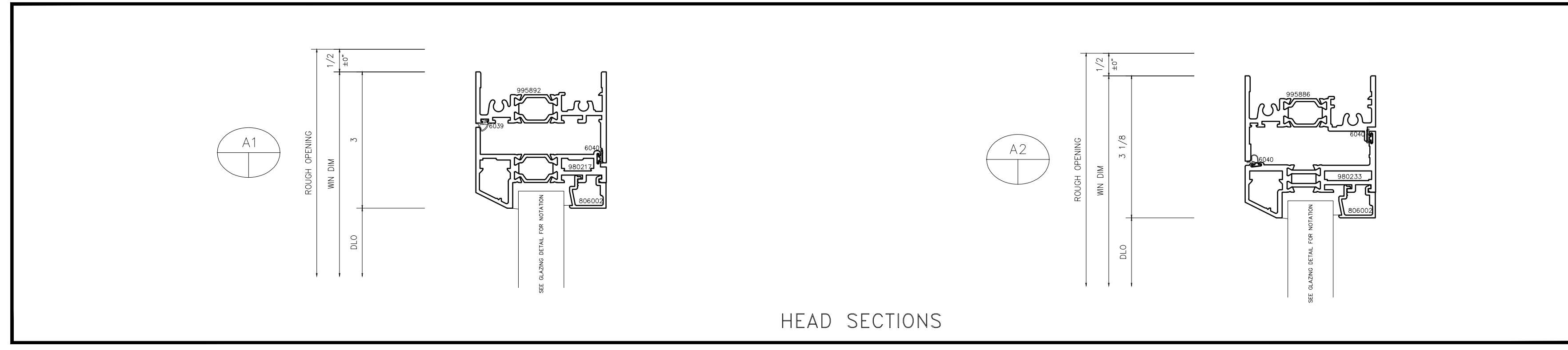
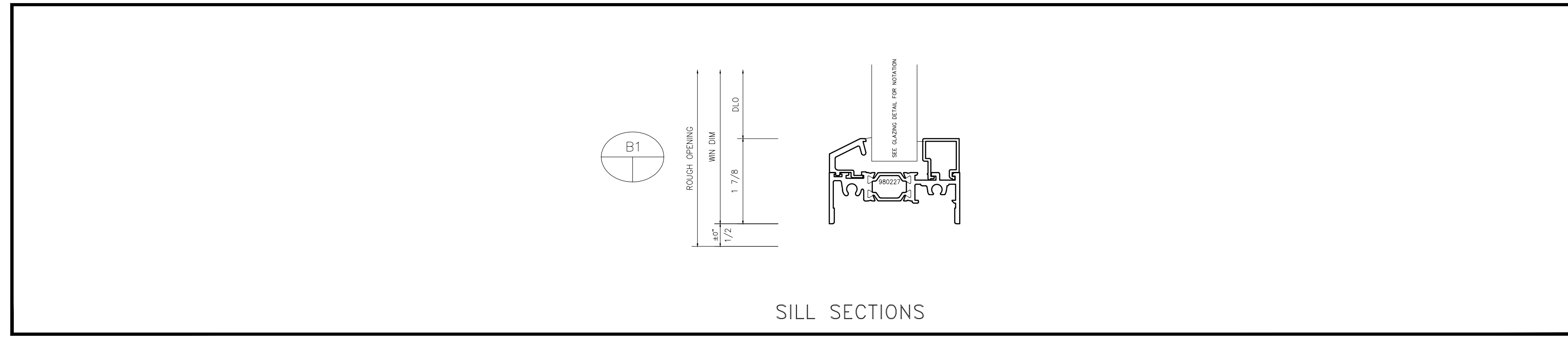


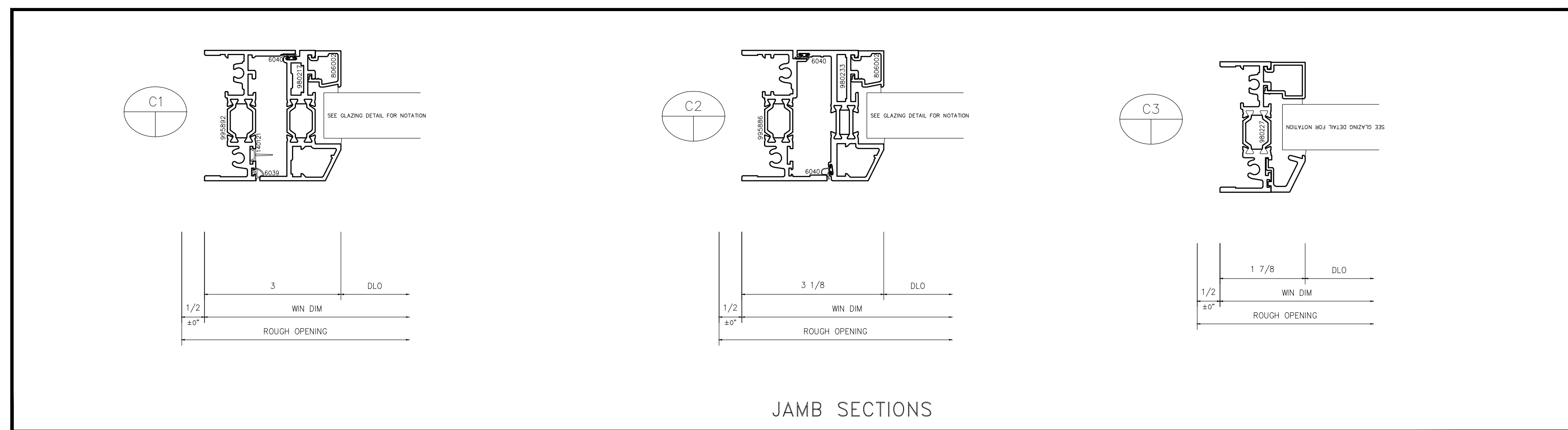
REFERENCE ELEVATIONS



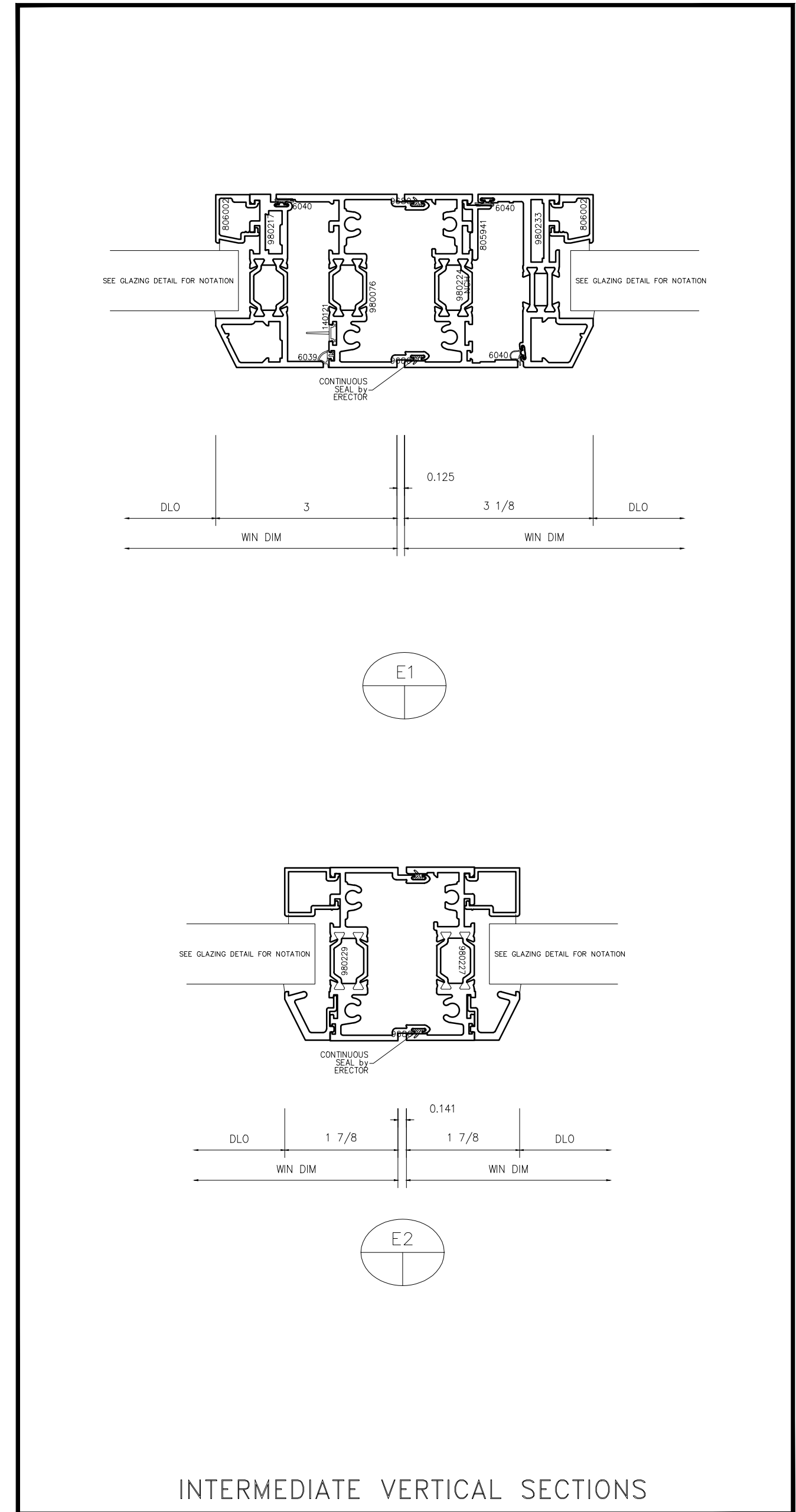
HEAD SECTIONS



SILL SECTIONS



JAMB SECTIONS



INTERMEDIATE VERTICAL SECTIONS

- NOTES:
1. SIZE LIMITATIONS
 - A. OPERABLE LITES: MAXIMUM CASEMENT 36" w X 60" h.
 - B. OPERABLE LITES: MAXIMUM AWNINGS & HOPPERS 60" w X 36" h.
 - C. FIXED LITES: MAXIMUM 60" w X 84" h.
 2. HARDWARE INFORMATION
 - A. S.S. 4-BAR HINGE, BUTT HINGE, CAMS, KEEPERS, CONCEALED LOCKS, ROTO'S, LIMIT STOPS.
 - B. 5/8" OR 1" BLINDS INSTALLED BY WAUSAU.
 3. AIR & WATER INFILTRATION
 - A. 0.10 cfm/sqft @ 6.24 psf (vents)
 - B. 0.06 cfm/sqft @ 6.24 psf (fixed)
 - C. 15 psf
 4. FRAME CONSTRUCTION
 - A. JAMBS RUN THROUGH.
 5. SASH CONSTRUCTION
 - A. MITERED, CORNER BLOCKED, AND CRIMPED.
 6. OPTIONAL: ACCESS DOORS AND SCREENS

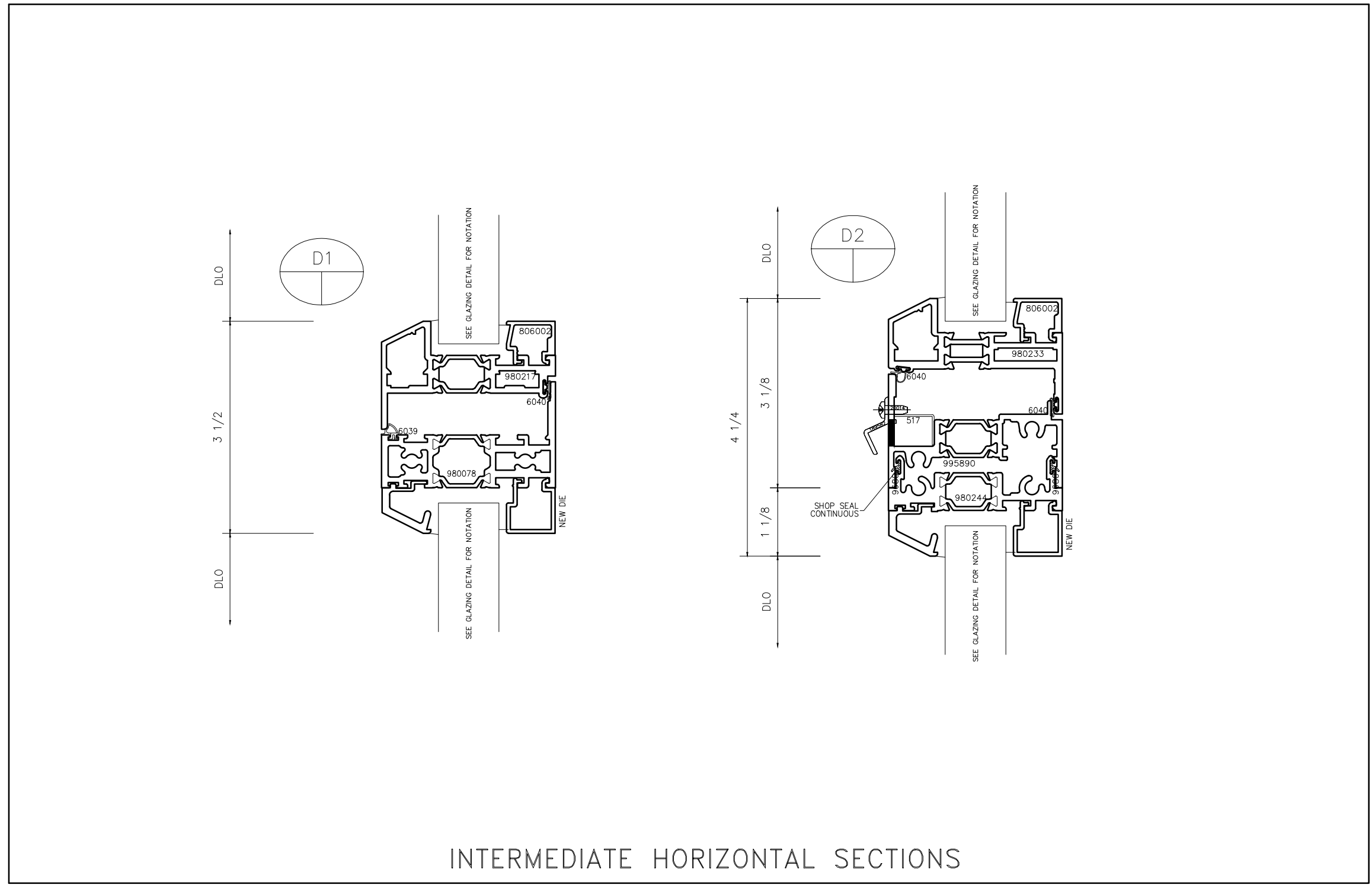
1" INFILL GLAZING BY WAUSAU PO/PI

1" INFILL GLAZING BY WAUSAU EXTERIOR GLAZED

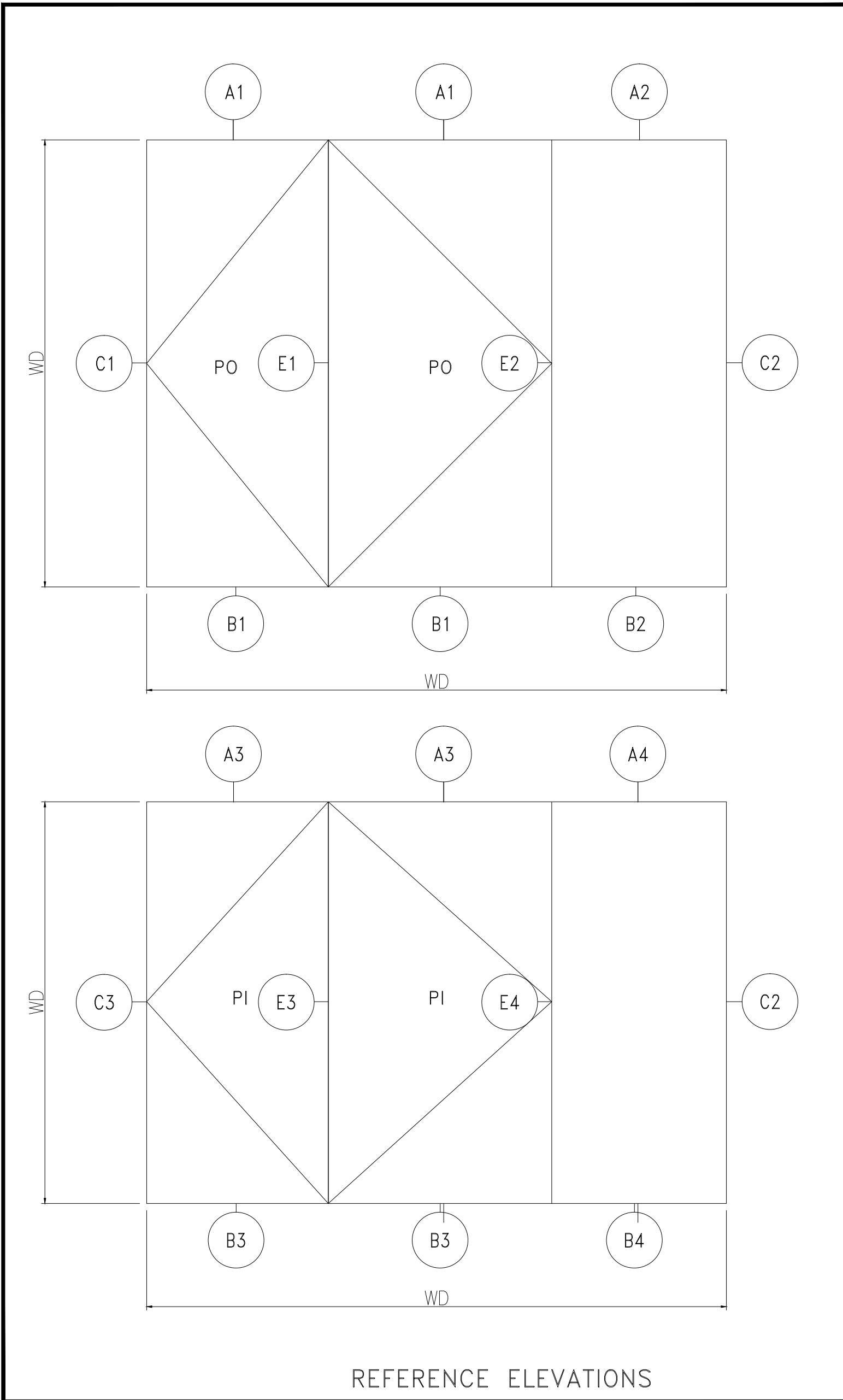
1	EXTERIOR CAP BEAD	SIL54	SILCN	KBP1,SLNT,DOW 791,BLACK,TUBES15	4	EXTERIOR WEDGE	5115	EPDM	VMI - WEDGE,.125 GAP	10
2	EXTERIOR TAPE	142748	BUTYL	VMI - TAPE,POLYSHM IL,150 X .200	8	SETTING BLOCK	146005	SILICONE	BLK,SETTING,.25 X 1.25 X 4.0 SILAP	
7	TOE BEAD	SIL54	SILCN	KBP1,SLNT,DOW 791,BLACK,TUBES15	9	HEAL BEAD	SIL54	SILCN	KBP1,SLNT,DOW 791,BLACK,TUBES15	
8	SETTING BLOCK	144463	SILICONE	BLK,SETTING,188 X 1.125 X 4.0,SAP	12	INTERIOR TAPE	142748	BUTYL	VMI - TAPE,POLYSHM IL,150 X .200	
14	INTERIOR WEDGE	5115	EPDM	VMI - WEDGE,.125 GAP	21	JAMB BLOCKS	146005	SILICONE	BLK,SETTING,.25 X 1.25 X 4.0 SILAP	
21	JAMB BLOCKS	144463	SILICONE	BLK,SETTING,188 X 1.125 X 4.0,SAP						
22	CROSS BLOCKS	144463	SILICONE	BLK,SETTING,188 X 1.125 X 4.0,SAP						

GLAZING DETAILS

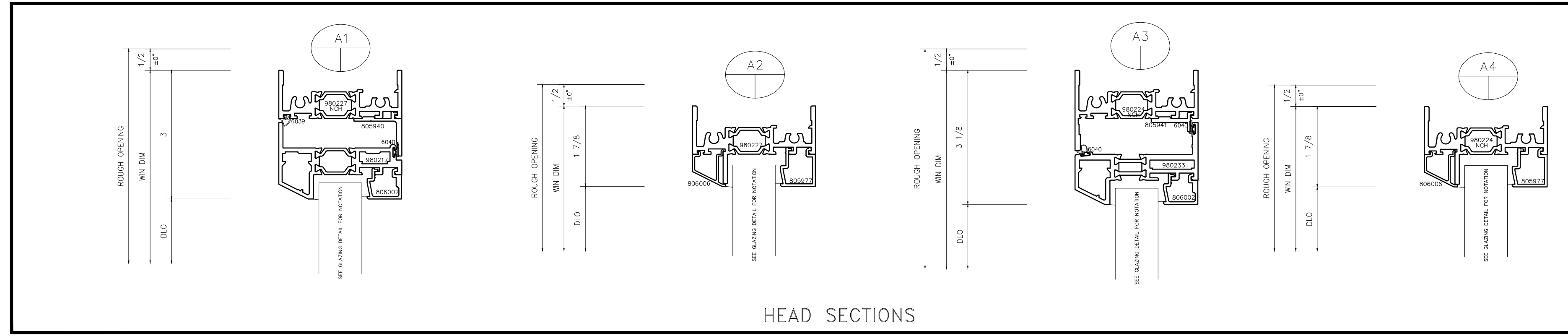
GLAZING DETAILS



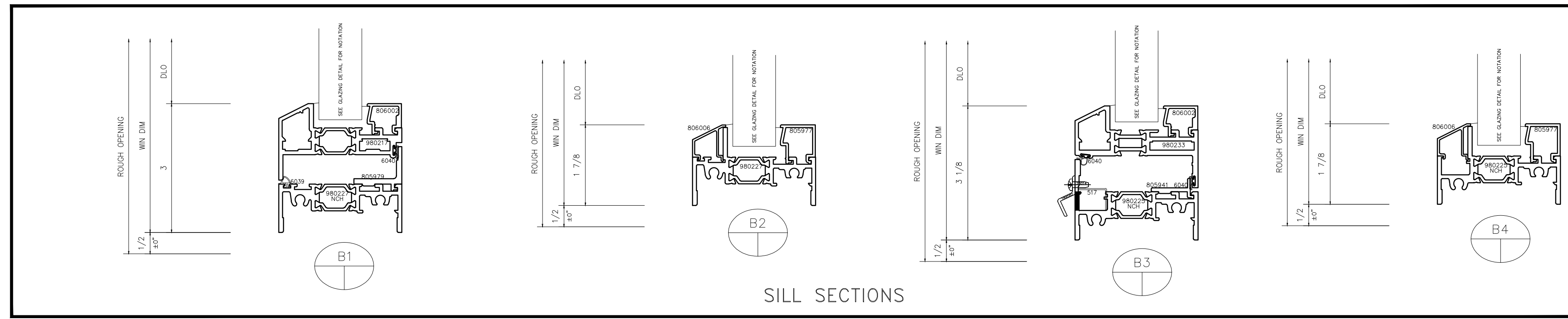
INTERMEDIATE HORIZONTAL SECTIONS



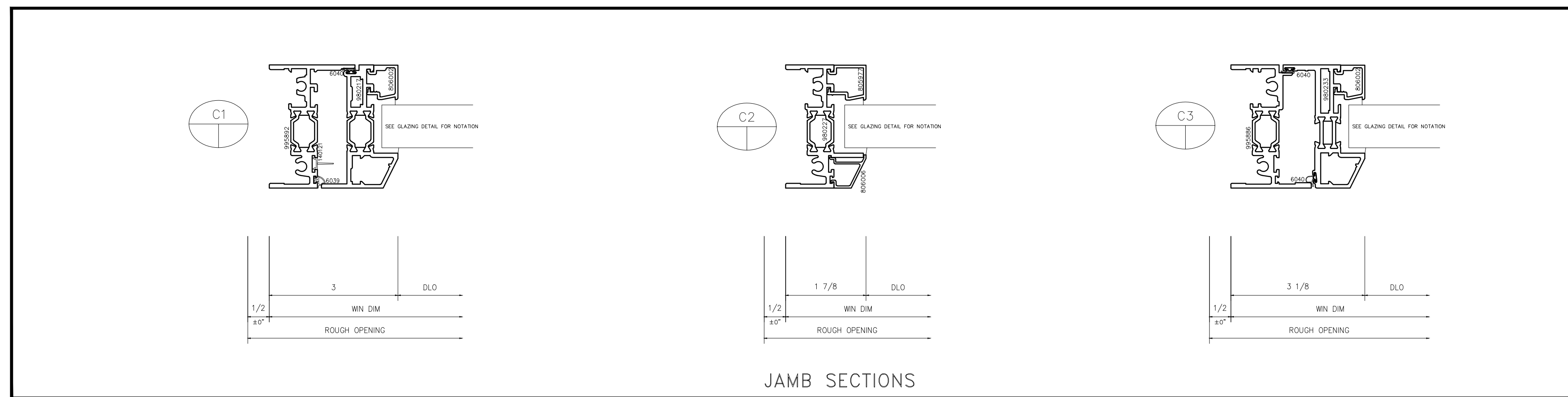
REFERENCE ELEVATIONS



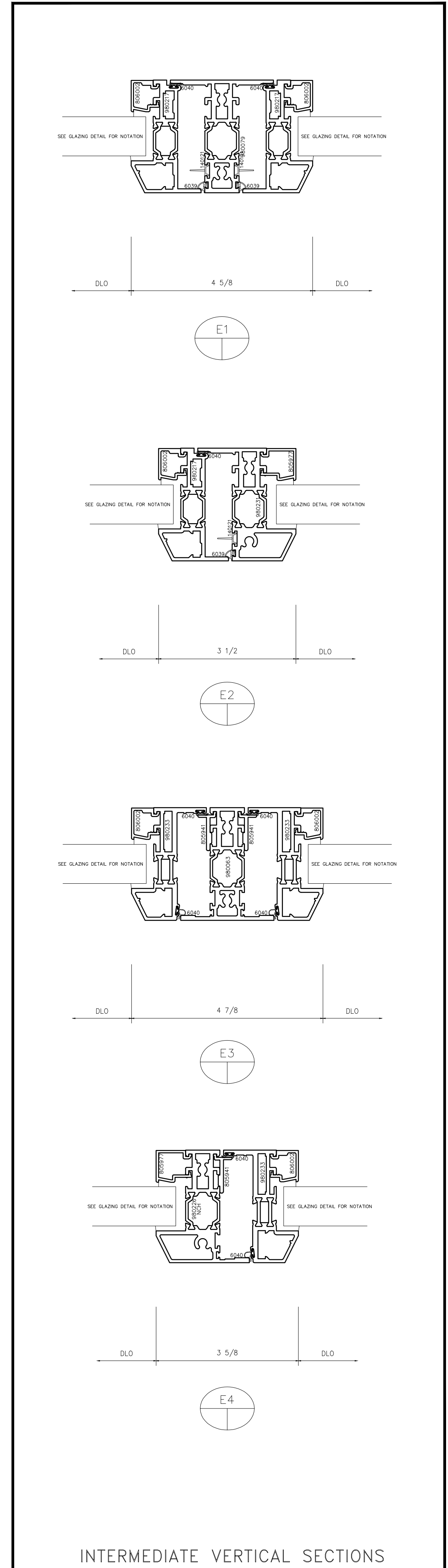
HEAD SECTIONS



SILL SECTIONS



JAMB SECTIONS



INTERMEDIATE VERTICAL SECTIONS

- NOTES:
- SIZE LIMITATIONS
 - OPERABLE LITES: MAXIMUM CASEMENT 36" w X 60" h.
 - OPERABLE LITES: MAXIMUM AWNINGS & HOPPERS 60" w X 36" h.
 - FIXED LITES: MAXIMUM 60" w X 84" h.
 - HARDWARE INFORMATION
 - S.S. 4-BAR HINGE, BUTT HINGE, CAMS, KEEPERS, CONCEALED LOCKS, ROTO'S, LIMIT STOPS.
 - 5/8" OR 1" BLINDS INSTALLED BY WAUSAU,
 - AIR & WATER INFILTRATION
 - 0.10 cfm/sqft @ 6.24 psf (vents)
 - 0.06 cfm/sqft @ 6.24 psf (fixed)
 - 15 psf
 - FRAME CONSTRUCTION
 - JAMBS RUN THROUGH.
 - SASH CONSTRUCTION
 - MITERED, CORNER BLOCKED, AND CRIMPED.
 - OPTIONAL: ACCESS DOORS AND SCREENS

1" INFILL GLAZING BY WAUSAU FIXED

1	EXTERIOR CAP BEAD	SIL54	SILCN	KBP1,SLNT,DOW 791,BLACK,TUBES15
2	EXTERIOR TAPE	142748	BUTYL	VMI - TAPE,POLYSHIM II,150 X .200
7	TOE BEAD	SIL54	SILCN	KBP1,SLNT,DOW 791,BLACK,TUBES15
8	SETTING BLOCK	137120	SILICONE	BLK,SETTING,25X 1.125X 4.0,SIL AP
14	INTERIOR WEDGE	5115	EPDM	VMI - WEDGE,.125 GAP 10
21	JAMB BLOCKS	137120	SILICONE	BLK,SETTING,25X 1.125X 4.0,SIL AP

1" INFILL GLAZING BY WAUSAU PO/PI

1	EXTERIOR CAP BEAD	SIL54	SILCN	KBP1,SLNT,DOW 791,BLACK,TUBES15
2	EXTERIOR TAPE	142748	BUTYL	VMI - TAPE,POLYSHIM II,150 X .200
7	TOE BEAD	SIL54	SILCN	KBP1,SLNT,DOW 791,BLACK,TUBES15
8	SETTING BLOCK	144463	SILICONE	BLK,SETTING,188 X 1.125 X 4.0,SAP
14	INTERIOR WEDGE	5115	EPDM	VMI - WEDGE,.125 GAP 10
21	JAMB BLOCKS	144463	SILICONE	BLK,SETTING,188 X 1.125 X 4.0,SAP
22	CROSS BLOCKS	144463	SILICONE	BLK,SETTING,188 X 1.125 X 4.0,SAP

DUAL GLAZED W/ 1" BLINDS

A	1/4" INFILL GLAZING BY WAUSAU			
1	EXTERIOR CAP BEAD	SIL54	SILCN	KBP1,SLNT,DOW 791,BLACK,TUBES15
2	EXTERIOR TAPE	142748	BUTYL	VMI - TAPE,POLYSHIM II,150 X .200
7	TOE BEAD	SIL54	SILCN	KBP1,SLNT,DOW 791,BLACK,TUBES15
8	SETTING BLOCK	136827	SILICONE	BLK,SETTING,.25 X .50 X 4.0,SIL AP
14	INTERIOR WEDGE	5127	EPDM	VMI - WEDGE,.188 GAP-500FT./BOX
21	JAMB BLOCKS	136827	SILICONE	BLK,SETTING,.25 X .50 X 4.0,SIL AP
B	1/4" INFILL GLAZING BY WAUSAU			
7	TOE BEAD	SIL54	SILCN	KBP1,SLNT,DOW 791,BLACK,TUBES15
8	SETTING BLOCK	132214	SILICONE	VMI - BLK,SETTING,.125X .25X 2.00DIL
21	JAMB BLOCKS	132214	SILICONE	VMI - BLK,SETTING,.125X .25X 2.00DIL
25	GLAZING SEALANT	SIL36	ACRYL	SLNT,SONHEE-MOREHEAD, 5G SM3900 RAPID GLAZE

JAMB BLOCKS REQUIRED ON UNITS OVER 90" TALL. SEE BOM FOR ACTUAL REQUIREMENTS.

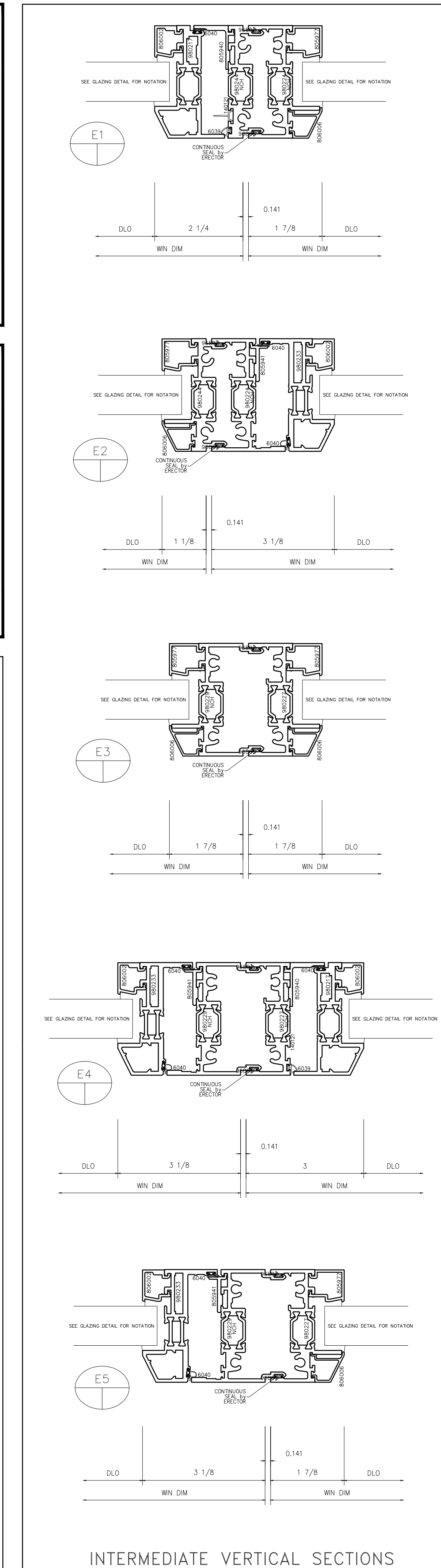
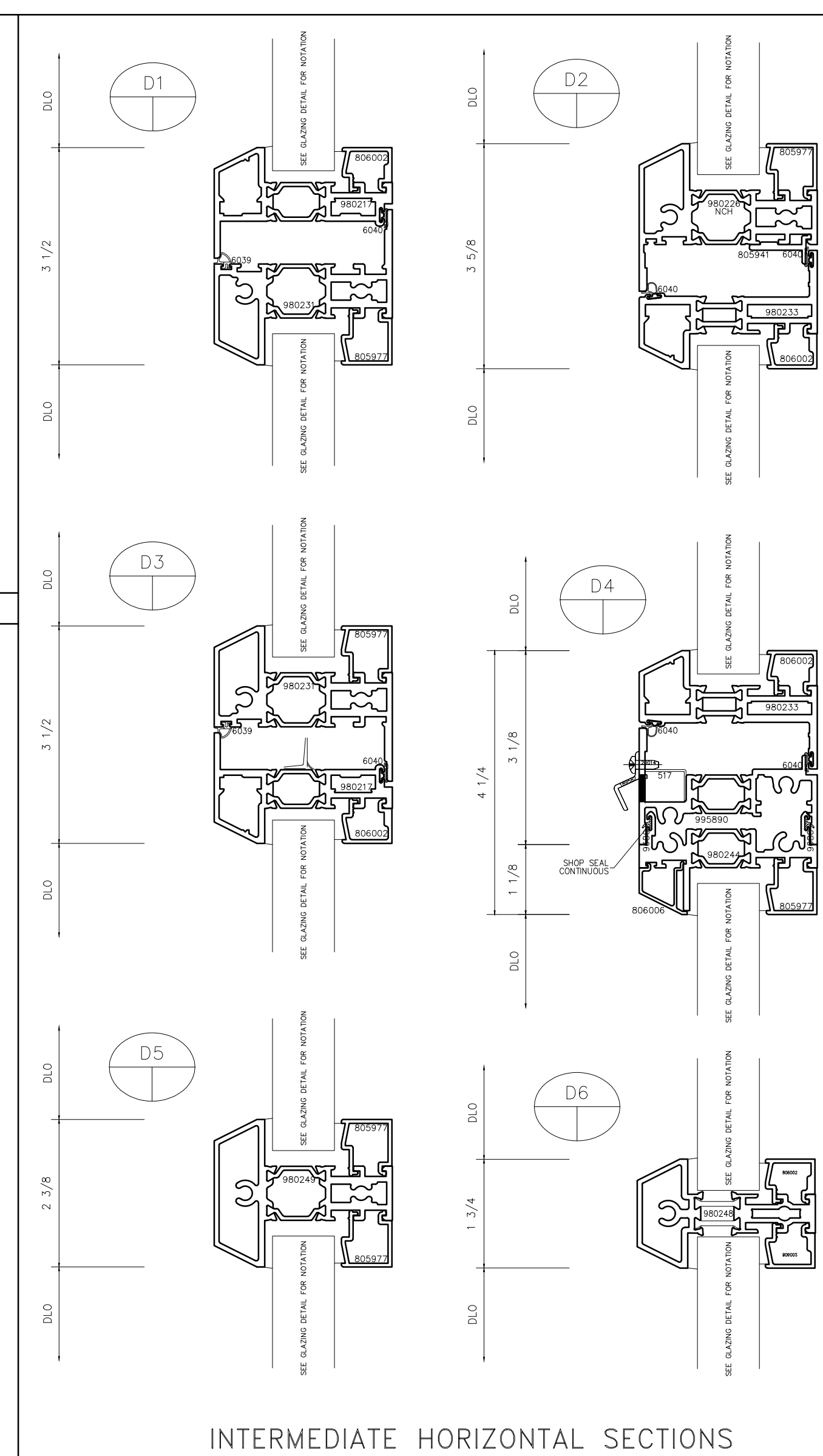
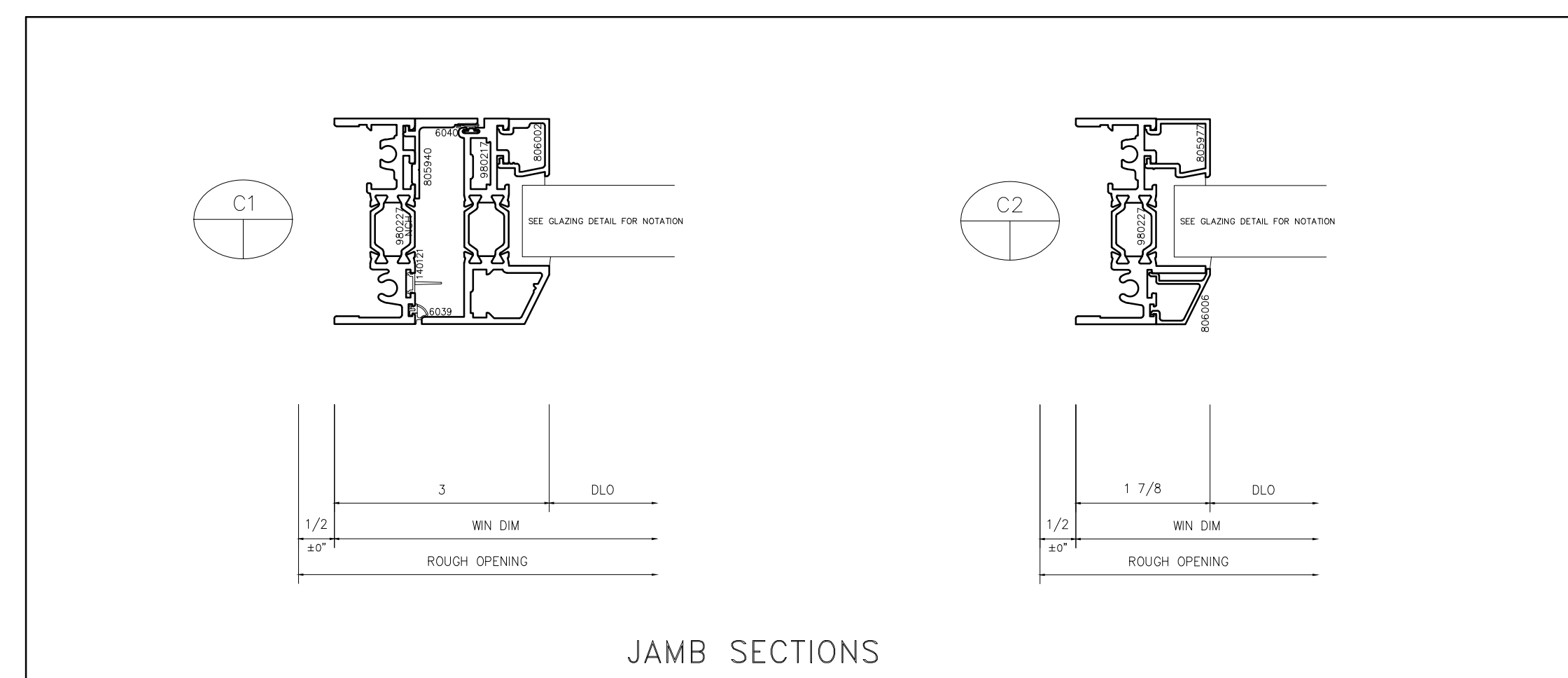
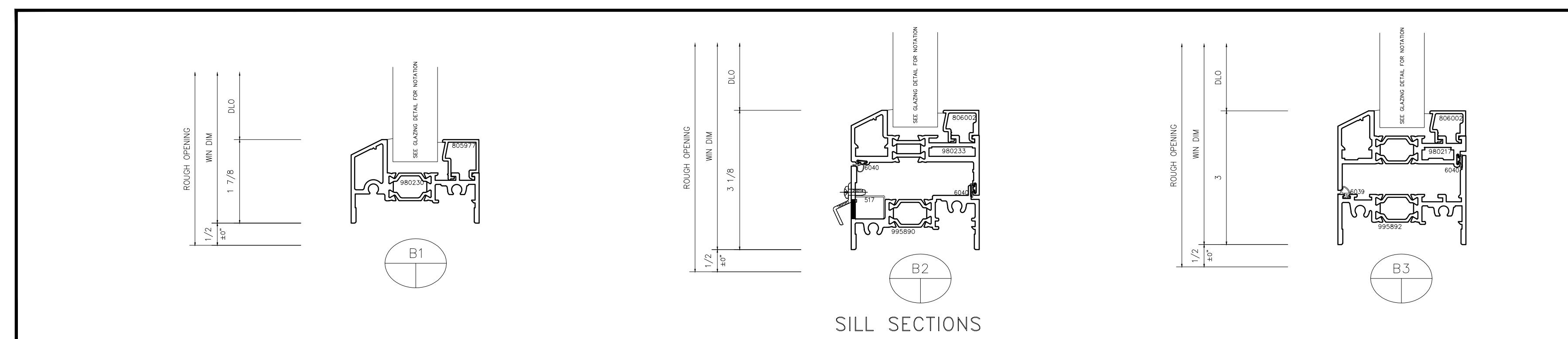
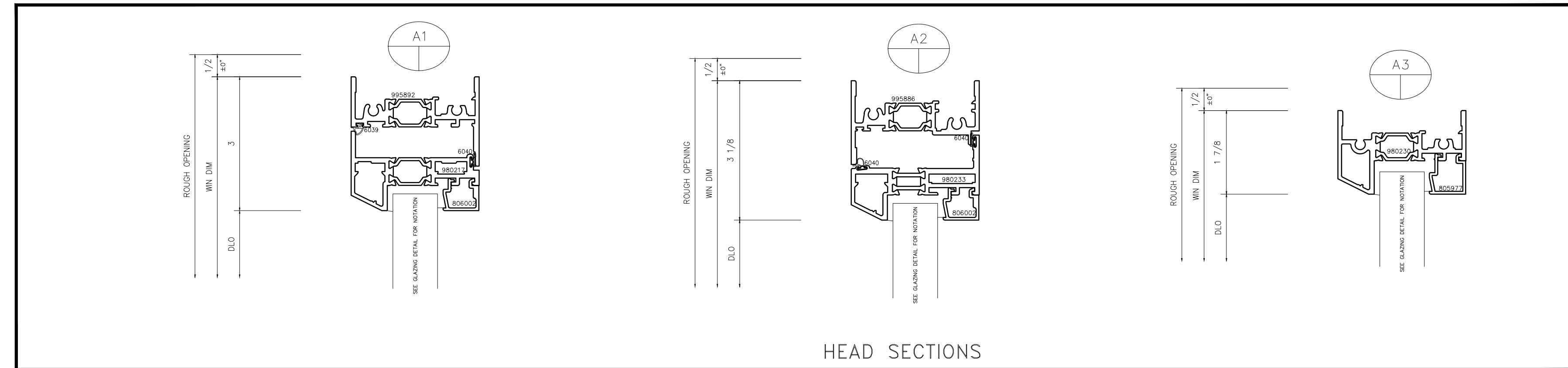
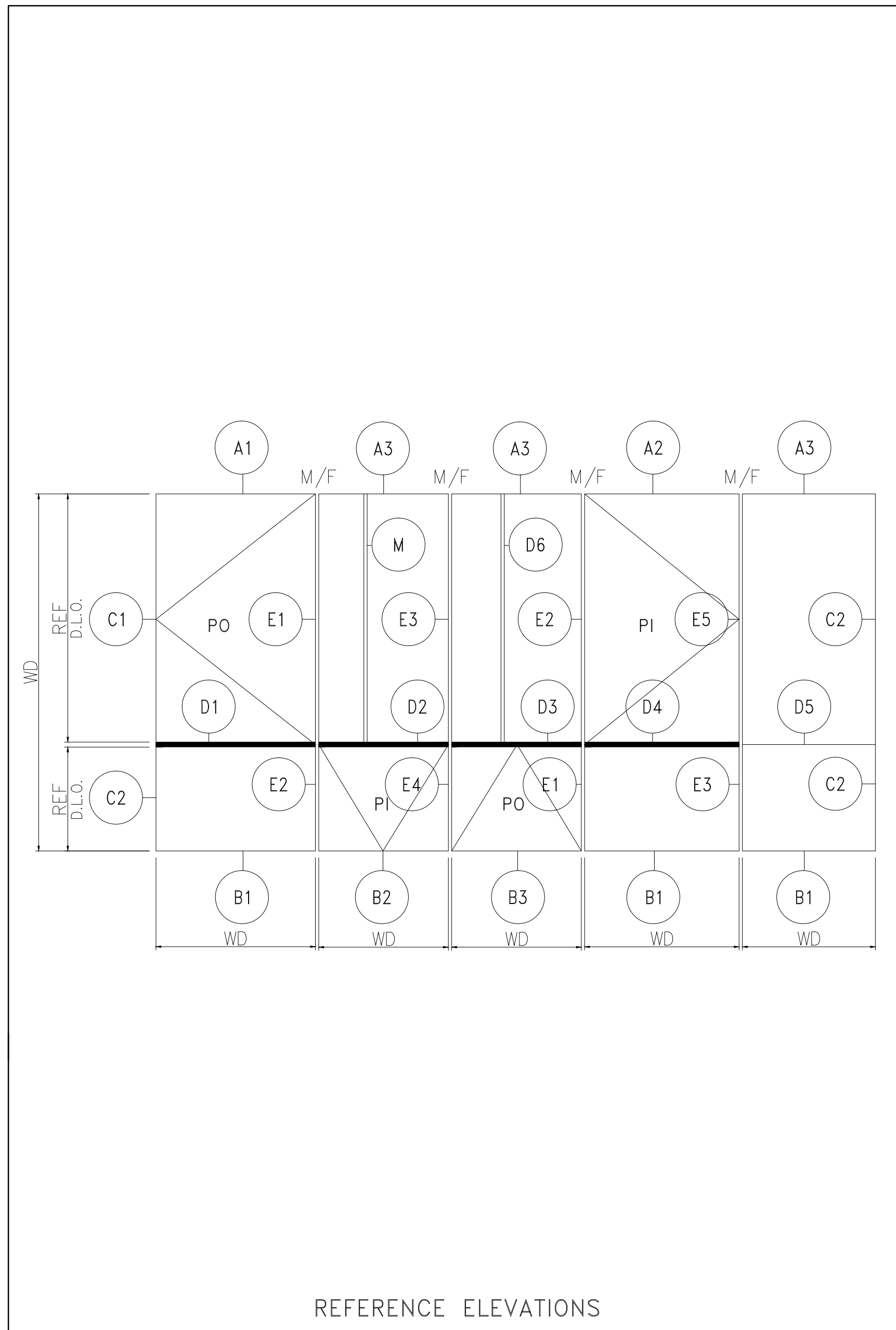
GLAZING DETAILS

ADVANTAGE
BY WAUSAU

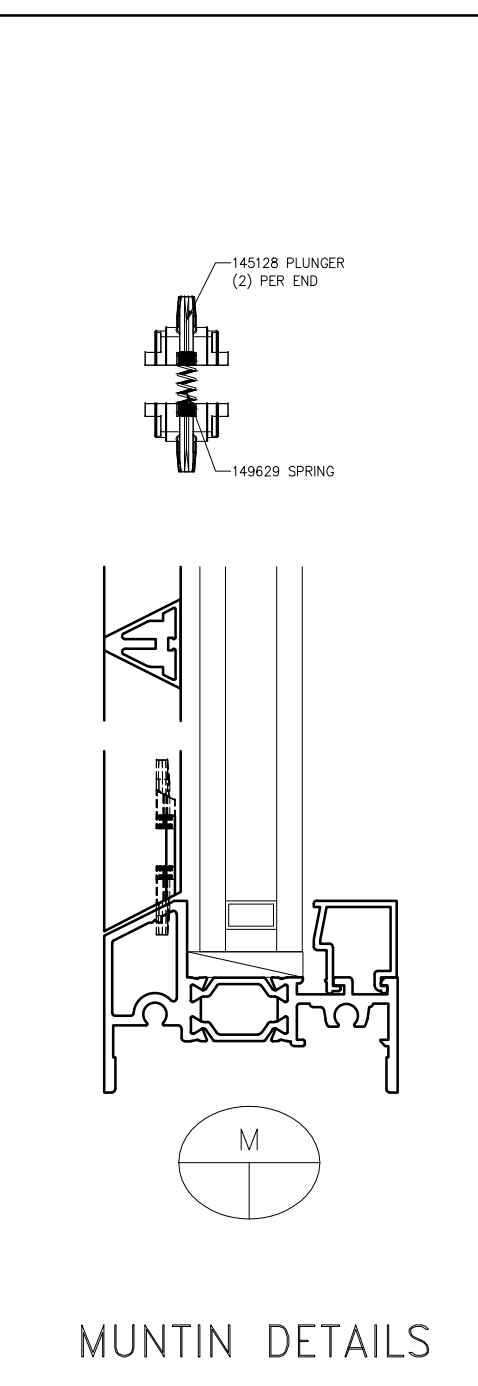
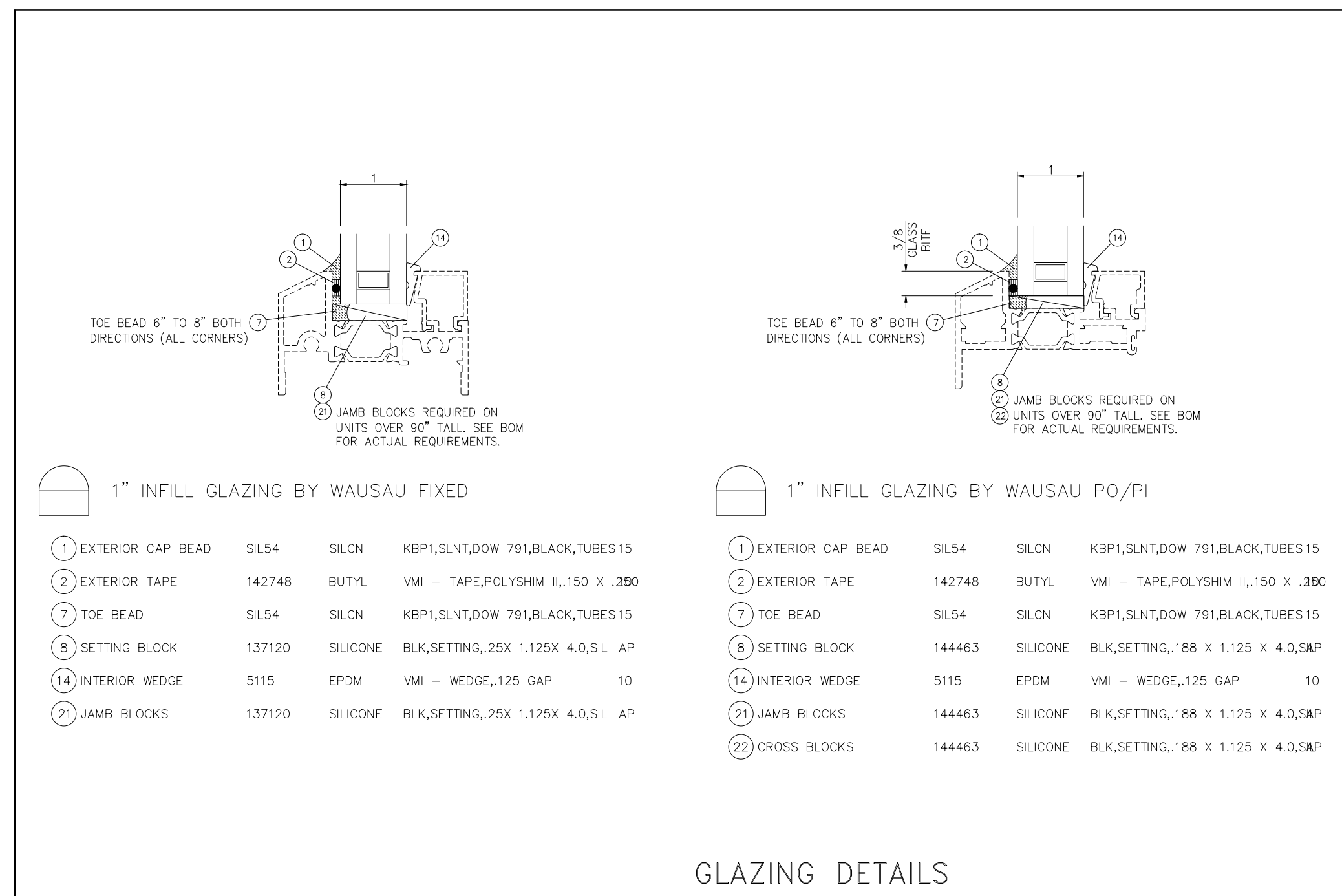
Phone: (715) 845-2161
Fax: (715) 843-4350
www.wausauwindow.com

SERIES:
2250 INVENT RETRO
(2 7/8" DEEP)

7800 International Drive
P.O. Box 1746
Wausau, WI 54402-1746



NOTES:
 1. SIZE LIMITATIONS
 A. OPERABLE LITES: MAXIMUM CASEMENT 36" w X 60" h.
 B. OPERABLE LITES: MAXIMUM AWNINGS & HOPPERS 60" w X 36" h.
 C. FIXED LITES: MAXIMUM 60" w X 84" h.
 2. HARDWARE INFORMATION
 A. S.S. 4-BAR HINGE, BUTT HINGE, CAMS, KEEPERS, CONCEALED LOCKS, ROTO'S, LIMIT STOPS.
 B. 5/8" OR 1" BLINDS INSTALLED BY WAUSAU.
 3. AIR & WATER INFILTRATION
 A. 0.10 cfm/sqft @ 6.24 psf (vents)
 B. 0.06 cfm/sqft @ 6.24 psf (fixed)
 C. 15 psf
 4. FRAME CONSTRUCTION
 A. JAMBS RUN THROUGH.
 5. SASH CONSTRUCTION
 A. MITERED, CORNER BLOCKED, AND CRIMPED.
 6. OPTIONAL: ACCESS DOORS AND SCREENS



ADVANTAGE
 BY WAUSAU

SERIES:
 2250 INVENT RETRO
 (2 7/8" DEEP)

Phone: (715) 845-2161
 Fax: (715) 843-4350
 www.wausauwindow.com

7800 International Drive
 P.O. Box 1746
 Wausau, WI 54402-1746