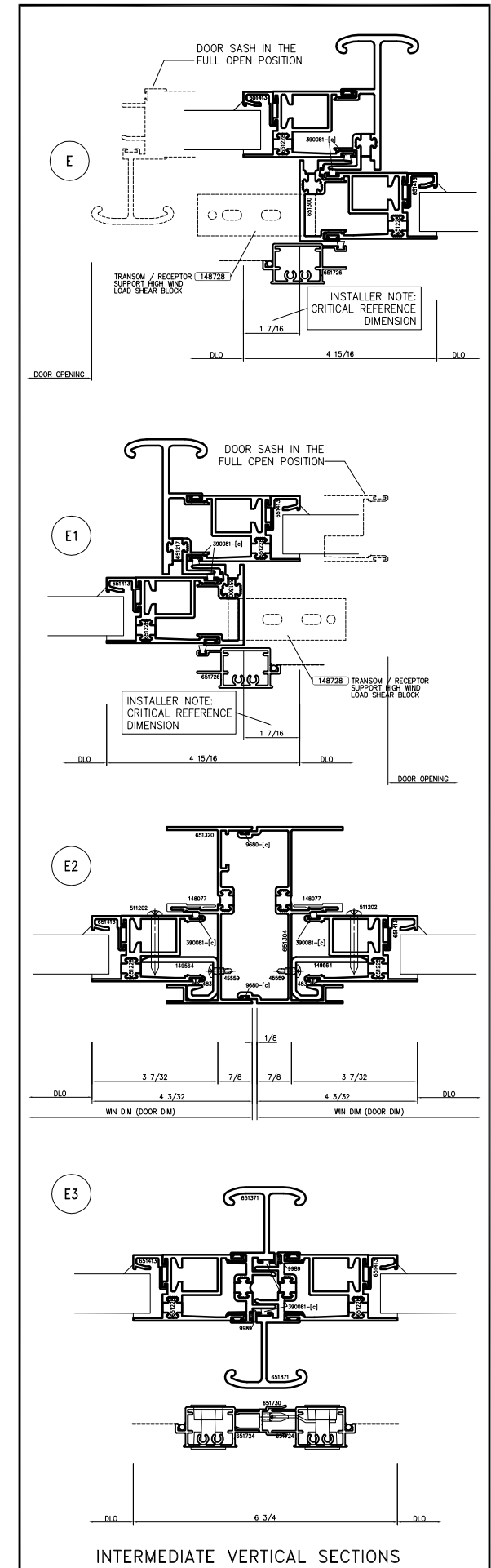
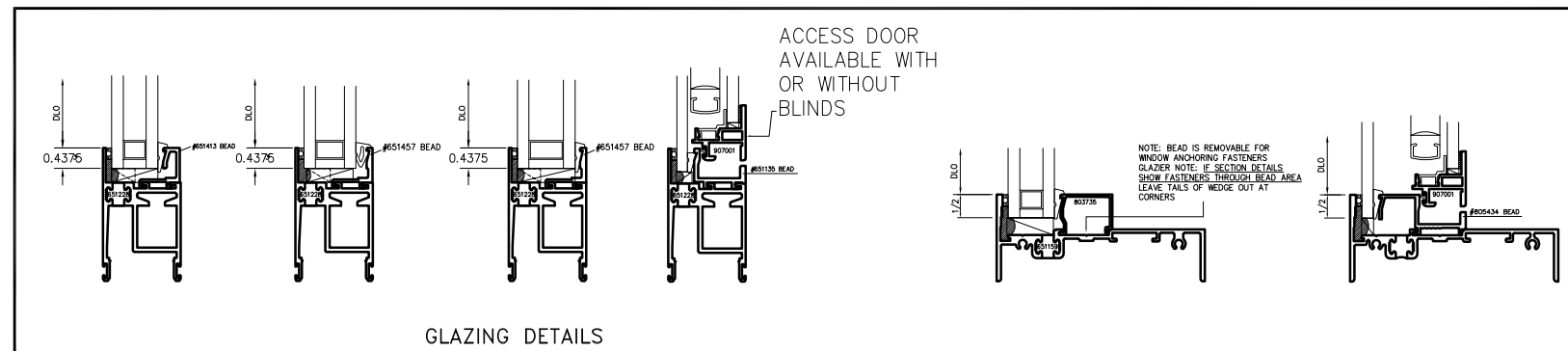
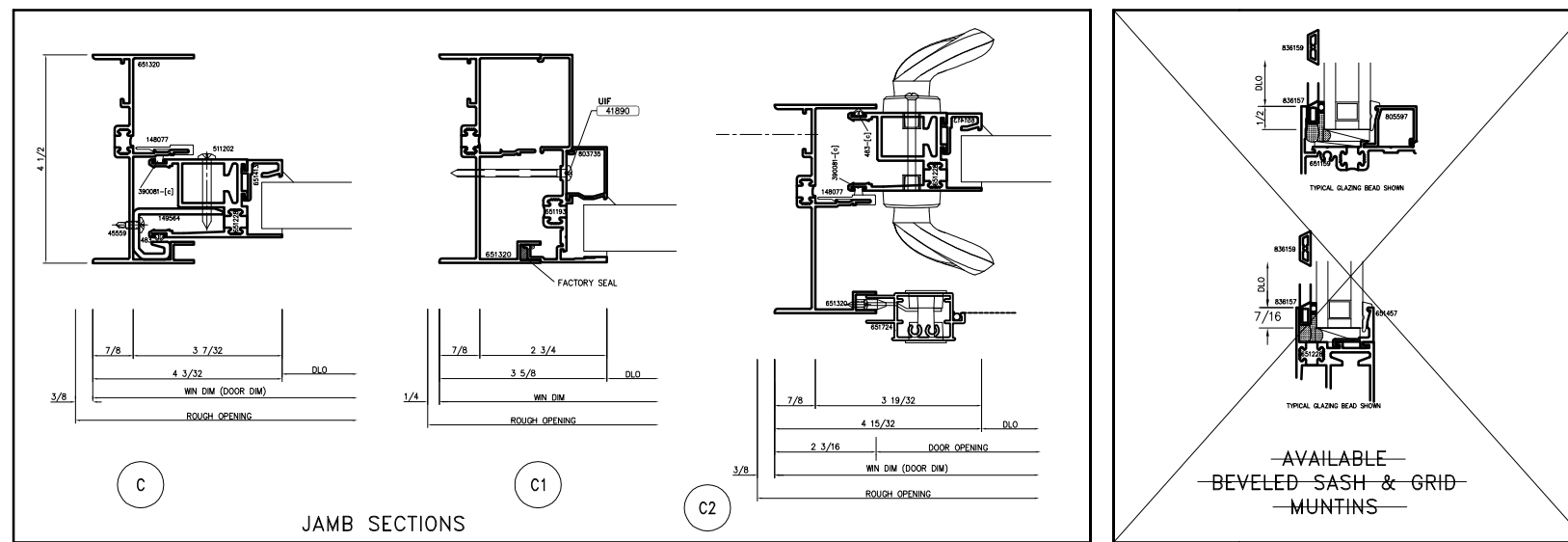
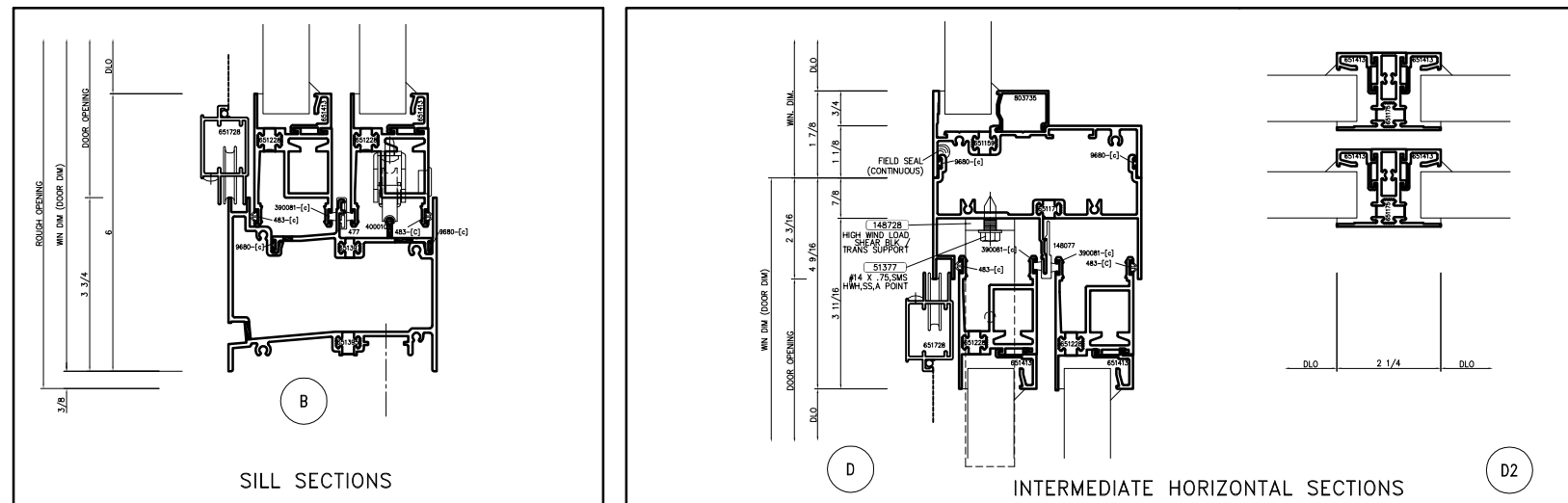
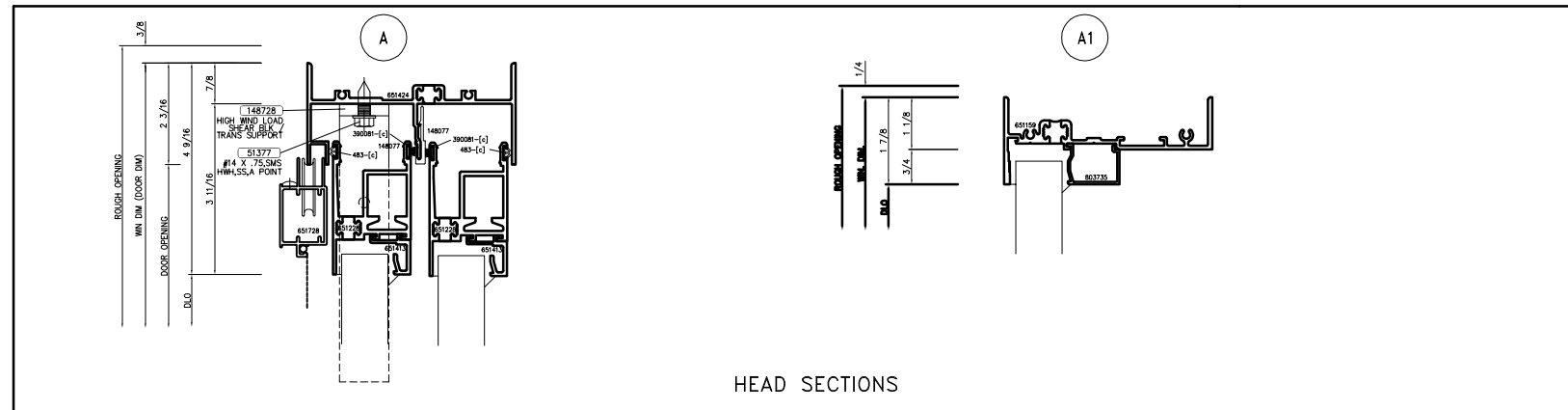


- NOTES:
1. SIZE LIMITATIONS
A. OPERABLE & FIXED PANEL: MAXIMUM 58" w X 92" h. MAX. SASH WEIGHT 400#
 2. FRAME CONSTRUCTION
A. JAMBS RUN THROUGH.
B. HEAD & SILL ARE SQ. CUT.
C. AN EXCEPTION TO THE STANDARD CONSTRUCTION IS HORIZONTAL WINDOW STACKS.
D. FRAME COMPONENTS ARE SHIPPED K.D.
 3. SASH CONSTRUCTION
A. MITERED, CORNER BLOCKED, & CRIMPED.
B. SASH IS SHIPPED GLAZED.

INSTALLER NOTE: INSTALL SLIDE IN ANCHORS PRIOR TO FRAME ASSEMBLY.
NOTE: SHW DOOR JAMBS FLARE AND STRAIGHT AT QUARTER POINT. (TYP.)
PRIMER SEAL, BACKER ROD, SHIM, AND BLOCKING IS REQUIRED FOR INSTALLATION. NOT BY WAUSAU.
INSTALLER TO PROVIDE DEAD LOAD SHW DIM DIRECTLY UNDER FRAME JAMBS, ROLLERS, AND AT ANCHOR POINTS. (TYP.)
INSTALLER TO SEAL ALL ANCHORAGE FASTENERS AT SILL LOCATE FASTENERS MINIMUM 1" AWAY FROM BLOCKING.



ADVANTAGE
BY WAUSAU

SERIES:
D5100 PATIO DOOR (4 1/2" DEEP)

7800 International Drive
P.O. Box 1746
Wausau, WI 54402-1746

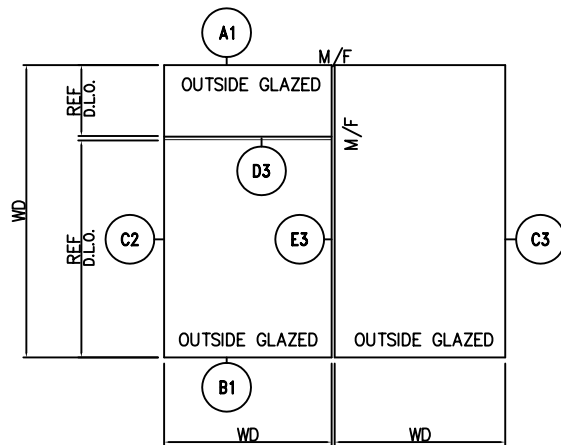
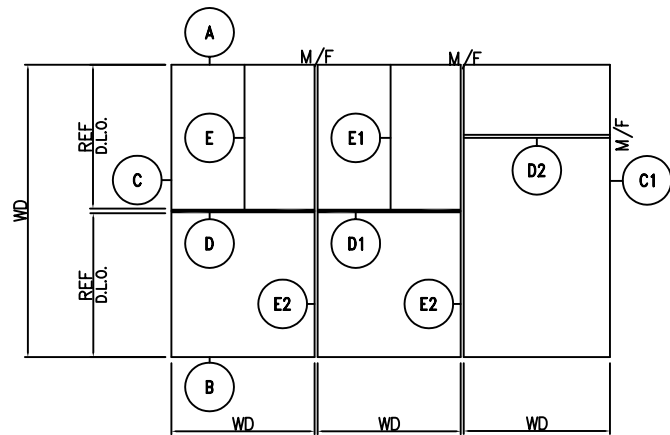
Phone: (715) 845-2161
Fax: (715) 843-4350
www.wausauwindow.com

LAST UPDATED: 12/9/14

ACCESS DOOR AVAILABLE WITH OR WITHOUT BLINDS

NOTE: BEAD IS REMOVABLE FOR WINDOW ANCHORING FASTENERS. GLAZER NOTE: IF SECTION DETAILS SHOW FASTENERS THROUGH BEAD AREA LEAVE TAILS OF WEDGE OUT AT CORNERS.

AVAILABLE BEVELED SASH & GRID MUNTINS



REFERENCE ELEVATIONS

- NOTES:
1. MALE/FEMALE JAMBS VERTICALS RUN THROUGH.
 2. SINGLE UNIT, HEAD AND SILL RUN THROUGH.
 3. FIXED LITES TO BE 48" WIDE x 64" HIGH—MAXIMUM WINDOW DIMENSION WHEN USED AS A SIDE-LITE.
 4. FIXED LITES TO BE 64" WIDE x 48" HIGH—MAXIMUM WINDOW DIMENSION WHEN USED AS A TRANSOM LITE.
 5. AIR & WATER INFILTRATION
 - A. 0.06 cfm/sqft @ 6.24 psf(fixed)
 - B. 12 psf

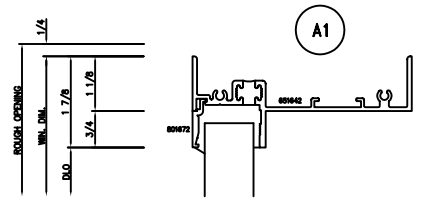
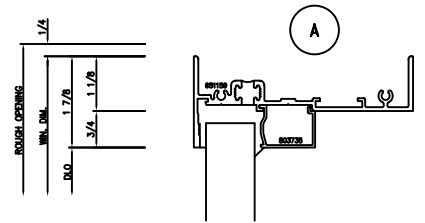
ADVANTAGE
BY WAUSAU

1415 West Street
P.O. Box 1746
Wausau, WI 54402-1746

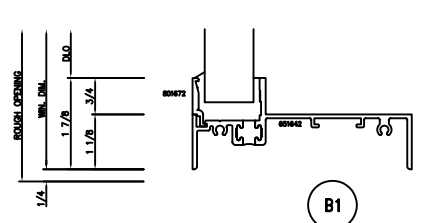
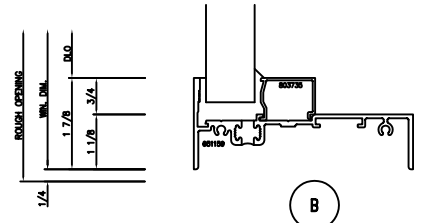
Phone: (715) 845-2161
Fax: (715) 845-4350
www.wausauwindow.com

SERIES:
3100/3150/3151/4100/D5100
FIXED (4 1/2" DEEP)

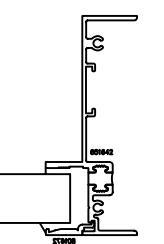
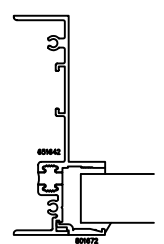
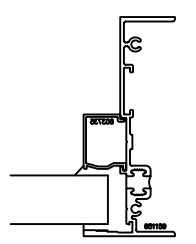
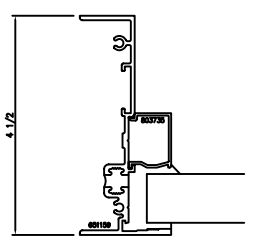
LAST UPDATED: 4/10/06



HEAD SECTIONS



SILL SECTIONS



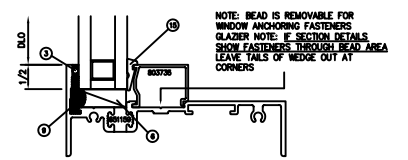
C

C1

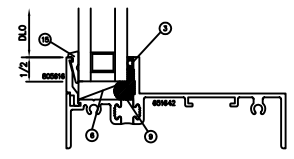
C2

C3

JAMB SECTIONS

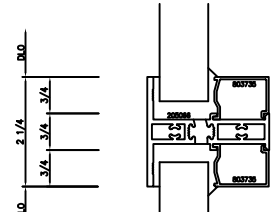


- INSIDE HEAD GLAZING @ FIXED WINDOWS W/ 1" GLASS UNIT**
GLASS GLAZING & GLAZING MATERIAL BY WAUSAU WINDOW AND WALL SYSTEMS PLANT 3
GLAZING NOTE: GLASS THICKNESS MUST NOT EXCEED 1" - CONFIRM THICKNESS WITH PURCHASING
- ① TRENCO 1/4 x .150 BUTYL GLAZING TAPE W/ 125 PRESHIM ROD (#142748) [c]
 - ② SETTING BLOCK EPDM 3/8 x 1 x 4 #133285 [c]
 - ③ G.E. SILGLAZE II BLACK CONTINUOUS TOE BEAD FULL PERIMETER #SL404 [c]
 - ④ DRIVE-WEDGE EPDM #5127 [c]

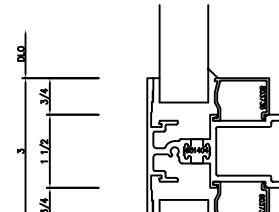


- OUTSIDE HEAD GLAZING @ FIXED WINDOWS W/ 1" GLASS UNIT**
GLASS GLAZING & GLAZING MATERIAL BY WAUSAU WINDOW AND WALL SYSTEMS PLANT 3
GLAZING NOTE: GLASS THICKNESS MUST NOT EXCEED 1" - CONFIRM THICKNESS WITH PURCHASING
- ① TRENCO 1/4 x .150 POLYSHIM II (.125 SHIM) BUTYL GLAZING TAPE (#142748) [c]
 - ② SETTING BLOCK EPDM 3/8 x 1 x 4 #133285 [c]
 - ③ G.E. SILGLAZE II BLACK CONTINUOUS TOE BEAD FULL PERIMETER #SL404 [c]
 - ④ DRIVE-WEDGE EPDM #5127 [c]

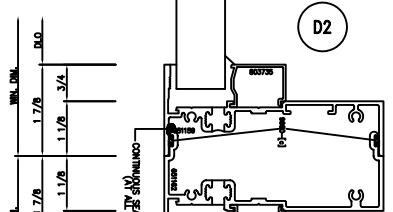
GLAZING DETAILS



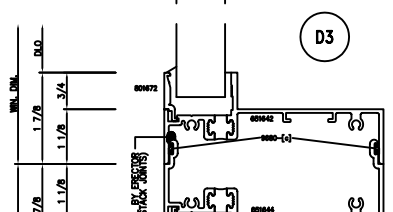
D



D1

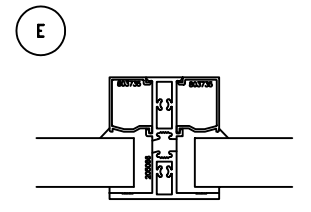


D2

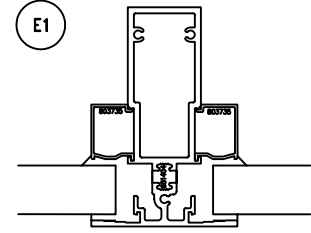


D3

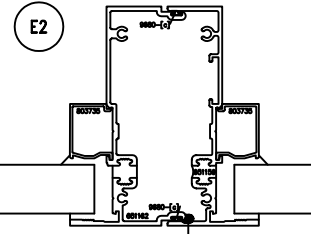
INTERMEDIATE HORIZONTAL SECTIONS



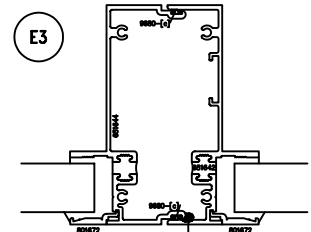
E



E1



E2



E3

INTERMEDIATE VERTICAL SECTIONS