

Architectural Formed Aluminum Brake Metal Program

Wausau's ability to provide fabrication for formed aluminum brake metal jobs, along with transportation and finishing of architectural metals, benefits our customers by offering:

- ↷ Convenience and time savings with 'one stop shop' for both metal and finish
- ↷ Shortened lead time
- ↷ Ability to finish brake metal material with the rest of the project
- ↷ Reduced freight costs
 - No freight costs incurred to Linetec
 - No freight costs between fabrication and finishing
- ↷ Recycled aluminum available upon request
- ↷ Finish applied after fabrication to ensure quality finish
- ↷ Up to 10 year warranty on material and finish

Formed Aluminum Brake Metal Capabilities

Aluminum sheet available in:
.040 .063 .090 .125 .190 .250

Sizes range from 48" X 100" up to 48" X 168" or
60" X 144"

Sheet available in anodize quality

V-Groove bending

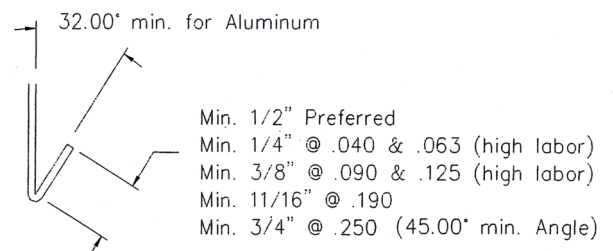
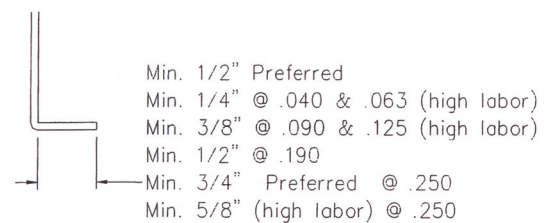
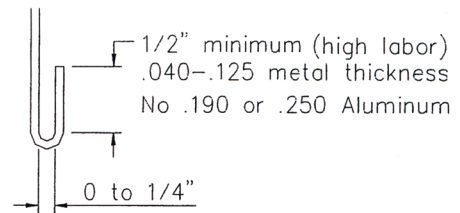
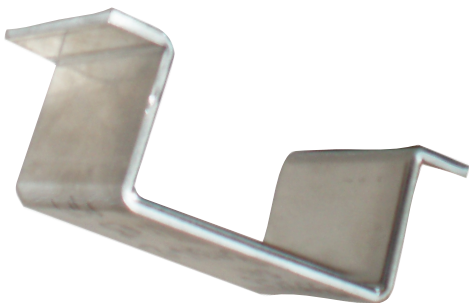
Splicing

Brake length capabilities up to 216"

Sheer length capabilities up to 168"

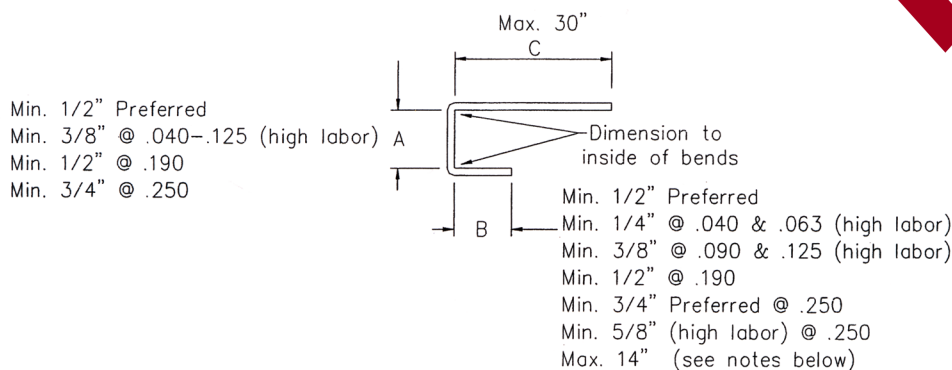
Custom built crates for shipment of completed
material

Additional capabilities available



WAUSAU

WINDOW AND WALL
SYSTEMS



For Aluminum .125-.250 thickness the "A" dim = 1 1/2 x "B" dimension. When "B" dim and "C" dim exceed this rule, "A" dim min. may be 2 1/2" but with bend line at center of "A" (high labor).

For Aluminum .040-.090 thickness:

"A" dim	Max. "B" dim	
1/2"	7/8"	(high labor)
1"	3"	(high labor)
2"	9 1/2"	(high labor)

Formed Aluminum Brake Metal Requirements of Customer

- Brake metal drawing with inside dimensions
- Alloy 3003 for paint or 5005 for anodized
- Sheet Thickness Selected
- Identify all angles other than 90°
- Critical dimensions should be identified
- Finishing exposure marked on prints
- Areas allowed for rack marks identified
- Crating/shipping instructions

